



**Document Version: 8**

**Date: 2004/11/11**

## **Product Functional Specification**

**46 inch Color TFT-LCD Module**

**Model Name: T460HW01 V.3**

**( ) Preliminary Specification**

**(\*) Final Specification**

Official UK Representative



Unit A Merlin Centre, Gatehouse Close,  
Aylesbury, HP19 8DP, ENGLAND

Tel.: +44 (0)1296-469770      Fax.: +44 (0)1296-469779  
sales@displaze.com      www.displaze.com

Please verify this is the latest information. E&OE

Note: This Specification is subject to change without notice.



## Contents

| No  |                                 |
|-----|---------------------------------|
|     | Cover                           |
|     | Contents                        |
|     | Record of Revisions             |
| 1   | General Descriptions            |
| 2   | Absolute Ratings                |
| 2-1 | TFT-LCD module                  |
| 2-2 | Backlight unit                  |
| 2-3 | Absolute Ratings of environment |
| 3   | Electrical Specifications       |
| 3-1 | Electrical Characteristics      |
| 3-2 | Interface Connections           |
| 3-3 | Input Timing Specifications     |
| 3-4 | Color Input Data Reference      |
| 3-5 | Power Sequence                  |
| 4   | Block Diagram                   |
| 4-1 | TFT-LCD module                  |
| 4-2 | Backlight unit                  |
| 5   | Optical Specifications          |
| 6   | Mechanical Characteristics      |
| 7   | Reliability                     |
| 8   | International Standards         |
| 8-1 | Safety                          |
| 8-2 | EMC                             |
| 9   | Packing                         |
| 10  | Precautions                     |



## Record of Revision

| Version | Date               | No  | Old Description                              | New Description  | Remark   |
|---------|--------------------|-----|--|--|----------|
| 0.1     | Sep.<br>26,'03     |     | First Draft (Preliminary)                    |  |          |
| 0.2     | Dec.<br>02,'03     | 3-2 | Modify Backlight connector pin Configuration |  | P9,      |
|         |                    | 5   | Update Mechanical Drawing                    |  | P19,P20  |
| 0.3     | Mar.<br>08,'04     | 5   | Update Mechanical Drawing                    |  | P19,P20  |
| 0.4     | Apr.<br>19,<br>'04 | 6   | Update the spec. for shock and vibration     |  | P21      |
| 0.5     | Apr<br>28,<br>'04  | 3-3 | Modify the Timing Table                      |  | P10      |
| 0.6     | Aug<br>30,<br>'04  | 2   |  | Absolute ratings for backlight unit  | add      |
|         |                    | 3   |  | Specify the characteristic table for TFT LCD and Backlight unit respectively.  | modify   |
|         |                    | 3-3 |  | Input timing waveform  | Add      |
|         |                    | 4   | NA   | block diagram  | add      |
|         |                    | 5   | TBD  | Contrast=600:1<br>Color Chromaticity:<br>R=(0.660,0.326)<br>G=(0.283, 0.580)<br>B=(0.140, 0.073)<br>W=(0.280, 0.290) | add      |
|         |                    | 5   | Luminance variation:5 points                 | Luminance variation:9 points   | Modified |
|         |                    | 6   | Master inverter on left-side                 | Master Inverter on right-side  | modify   |
|         |                    | 9   | TBD  | Define Packing   | add      |
| 0.7     | Oct<br>27,<br>'04  | 3-1 | TBD  | Define Icc & Irush current   | add      |



|     |                   |     |                       |           |       |       |           |                       |           |       |       |       |        |
|-----|-------------------|-----|-----------------------|-----------|-------|-------|-----------|-----------------------|-----------|-------|-------|-------|--------|
|     |                   | 3-3 | Input timing waveform |           |       |       |           | Input timing waveform |           |       |       |       | modify |
| 0.8 | Nov<br>11,<br>'04 | 3-3 | Input timing Spec     |           |       |       |           | Input timing Spec     |           |       |       |       | modify |
|     |                   |     | Signal                | Item      | Min.  | Typ.  | Max.      | Signal                | Item      | Min.  | Typ.  | Max.  |        |
|     |                   |     | Vertical<br>Section   | Period    | 1088  | 1130  | 1200      | Vertical<br>Section   | Period    | 1098  | 1116  | 1134  |        |
|     |                   |     |                       | Active    | 1080  | 1080  | 1080      |                       | Active    | 1080  | 1080  | 1080  |        |
|     |                   |     |                       | Blanking  | 8     | 50    | 120       |                       | Blanking  | 18    | 36    | 54    |        |
|     |                   |     | Horizontal<br>Section | Period    | 1000  | 1100  | 1180      | Horizontal<br>Section | Period    | 1000  | 1104  | 1250  |        |
|     |                   |     |                       | Active    | 960   | 960   | 960       |                       | Active    | 960   | 960   | 960   |        |
|     |                   |     |                       | Blanking  | 40    | 140   | 220       |                       | Blanking  | 40    | 144   | 290   |        |
|     |                   |     | Clock                 | Period    | 15.32 | 13.51 | 11.76     | Clock                 | Period    | 15.15 | 13.51 | 11.76 |        |
|     |                   |     |                       | Frequency | 65.28 | 74    | 85        |                       | Frequency | 66    | 74    | 85    |        |
|     |                   | 3-5 | Power sequence        |           |       |       |           | Power sequence        |           |       |       |       | modify |
|     | Nov<br>11,<br>'04 |     | Parameter             | Values    |       |       | Parameter | Values                |           |       |       |       |        |
|     |                   |     |                       | Min.      | Typ.  | Max.  |           | Min.                  | Typ.      | Max.  |       |       |        |
|     |                   |     | t1                    | 470       | -     | 1000  | t1        | 470                   | -         | 1000  |       |       |        |
|     |                   |     | t2                    | 30        | -     | -     | t2        | 20                    | -         | 50    |       |       |        |
|     |                   |     | t3                    | 200       | -     | -     | t3        | 500                   | -         | -     |       |       |        |
|     |                   |     | t4                    | 200       | -     | -     | t4        | 500                   | -         | -     |       |       |        |
|     |                   |     | t5                    | 30        | -     | -     | t5        | 20                    | -         | 50    |       |       |        |
|     |                   |     | t6                    | -         | -     | 30    | t6        | 0.47                  | -         | 30    |       |       |        |
|     |                   |     | t7                    | 1         | -     | -     | t7        | 1                     | -         | -     |       |       |        |



## 1. General Description

This specification applies to the 46.0 inch Color TFT-LCD Module T460HW01. This LCD module has a TFT active matrix type liquid crystal panel 1920x1080 pixels, and diagonal size of 46.0 inch. This module supports 1920x1080 HDTV mode (Non-interlace).

Each pixel is divided into Red, Green and Blue sub-pixels or dots which are arranged in vertical stripes. Gray scale or the brightness of the sub-pixel color is determined with a 8-bit gray scale signal for each dot.

The T460HW01 has been designed to apply the 8-bit 2 channel LVDS interface method. It is intended to support displays where high brightness, wide viewing angle, high color saturation, and high color depth are very important.

## 3. General Information

| Items              | Specification                     | Unit   | Note          |
|--------------------|-----------------------------------|--------|---------------|
| Active Screen Size | 46                                | Inches |               |
| Display Area       | 1019.52 (H) x 573.48(V)           | mm     |               |
| Outline Dimension  | 1109.34(H) x 654.56(V) x 47.68(D) | mm     | With inverter |
| Driver Element     | a-Si TFT active matrix            |        |               |
| Display Colors     | 16.7M                             | Colors |               |
| Number of Pixels   | 1920 x 1080                       | Pixel  |               |
| Pixel Arrangement  | RGB vertical stripe               |        |               |
| Pixel Pitch        | 0.531(H) x 0.531(W)               | mm     |               |
| Display Mode       | Normally Black                    |        |               |
| Surface Treatment  | Anti-Glare                        |        |               |



## 2. Absolute Ratings

The following are maximum values which, if exceeded, may cause faulty operation or damage to the unit.

### 2-1 TFT-LCD module

| Parameter           | Symbol          | Min. | Max. | Unit | Note      |
|---------------------|-----------------|------|------|------|-----------|
| Power Input Voltage | V <sub>CC</sub> | 10.8 | 13.2 | V    | At 25±5°C |

### 2-2 Backlight unit

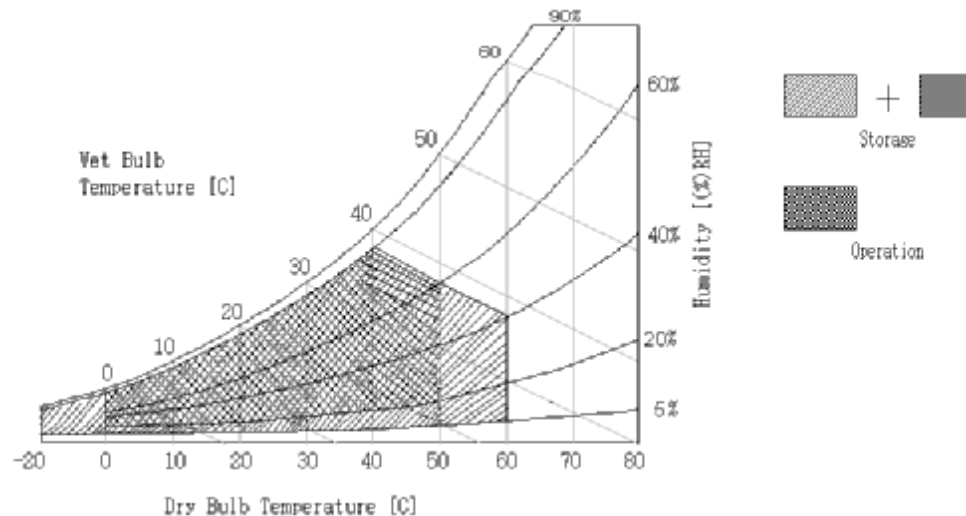
| Parameter           | Symbol            | Min. | Max. | Unit | Note      |
|---------------------|-------------------|------|------|------|-----------|
| Power Input Voltage | V <sub>DD</sub> B | 22.8 | 25.2 | V    | At 25±5°C |

### 2-3 Absolute Ratings of environment

| Parameter                  | Symbol          | Min. | Max. | Unit | Note |
|----------------------------|-----------------|------|------|------|------|
| Operating Temperature      | T <sub>OP</sub> | 00   | 50   | °C   | 1    |
| Storage Temperature        | H <sub>ST</sub> | -20  | 60   | °C   | 1    |
| Operating Ambient Humidity | H <sub>OP</sub> | 10   | 90   | %RH  | 1    |
| Storage Humidity           | H <sub>ST</sub> | 10   | 90   | %RH  | 1    |

Note:

3. Temperature and relative humidity range are shown in the figure below. Wet bulb temperature should be 39°C





### 3. Electrical Specification

The T460HW01 requires two power inputs. One is employed to power the LCD electronics and to drive the TFT array and liquid crystal. The second input is for the back light unit, and is typically generated by an inverter

#### 3-1 Electrical Characteristics

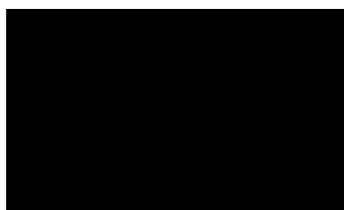
##### TFT LCD Module

| Parameter                  | Symbol            | Values |      |      | Unit | Notes |
|----------------------------|-------------------|--------|------|------|------|-------|
|                            |                   | Min    | Typ  | Max  |      |       |
| Power Supply Input Voltage | V <sub>CC</sub>   | 10.8   | 12   | 13.2 | V    | 1     |
| Power Supply Input Current | Black             | -      | 0.76 | -    | A    | 2     |
|                            | White             | -      | 1.57 | -    |      |       |
|                            | N-pattern         | -      | 1.34 | -    |      |       |
| Inrush Current             | I <sub>RUSH</sub> | -      | -    | 6    | A    | 3     |

Note:

1. The specified current and power consumption are under the V<sub>CC</sub>=12.0V, 25°C, f<sub>v</sub>= 60Hz, f<sub>CLK</sub>=65Mhz condition whereas mosaic pattern (8x6) is displayed and f<sub>v</sub> is the frame frequency.
2. Power dissipation check pattern (LCD module only)

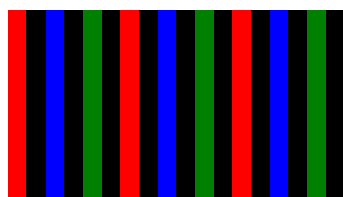
Black:

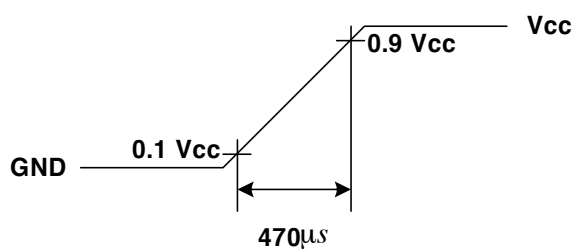


White:



N-pattern:









## Backlight unit

| No | ITEM                          |     | SYMBOL | TEST CONDITION | MIN  | TYP    | MAX  | UNIT  | MEASURING CIRCUIT |
|----|-------------------------------|-----|--------|----------------|------|--------|------|-------|-------------------|
| 1  | Input voltage                 |     | VDDB   |                | 22.8 | 24     | 25.2 | V     |                   |
| 2  | Input current                 |     | IDDB   | VDDB=24V,MAX   | —    | 10.5   | —    | A     |                   |
| 3  | ON/OFF<br>Control<br>voltage  | ON  | BLON   | VDDB=24V       | 2    | —      | 5    | V     | or OPEN           |
|    |                               | OFF | BLON   | VDDB=24V       | 0    | —      | 0.8  | V     |                   |
| 4  | Dimming<br>Control<br>voltage | MAX | VDIM   | VDDB=24V       | —    | 0      | —    | V     |                   |
|    |                               | MIN | VDIM   | VDDB=24V       | —    | 3      | —    | V     |                   |
| 5  | Power<br>Consumption          |     |        |                | -    | 250    | 280  | W     | 1                 |
| 6  | Life Time                     |     |        |                | -    | 50,000 | -    | Hours | 2                 |

### Note:

1. The lamp power consumption shown above does include loss of external inverter at 25°C. The used lamp current is the lamp typical current.
2. The life is determined as the time at which luminance of the lamp is 50% compared to that of initial value at the typical lamp current on condition of continuous operating at 25±2°C
3. The design of the inverter must have specifications for the lamp in LCD Assembly. The performance of the Lamp in LCM, for example lifetime or brightness, is extremely influenced by the characteristics of the DC-AC Inverter. So all the parameters of an inverter should be carefully designed so as not to produce too much leakage current from high-voltage output of the inverter. When you design or order the inverter, please make sure unwanted lighting caused by the mismatch of the lamp and the inverter (no lighting, flicker, etc) never occurs. When you confirm it, the LCD Assembly should be operated in the same condition as installed in your instrument.
4. Do not attach a conducting tape to lamp connecting wire. If the lamp wire attach to conducting tape, TFT-LCD Module have a low luminance and the inverter has abnormal action because leakage current occurs between lamp wire and conducting tape.
5. The relative humidity must not exceed 80% non-condensing at temperatures of 40°C or less. At temperatures greater than 40°C, the wet bulb temperature must not exceed 39°C. When operate at low temperatures, the brightness of CCFL will drop and the lifetime of CCFL will be reduced.



## 3-2 Interface Connections

### TFTLCD Module:

- LCD Connector (CN1): **JAE FI-X30S-HF** or equivalent

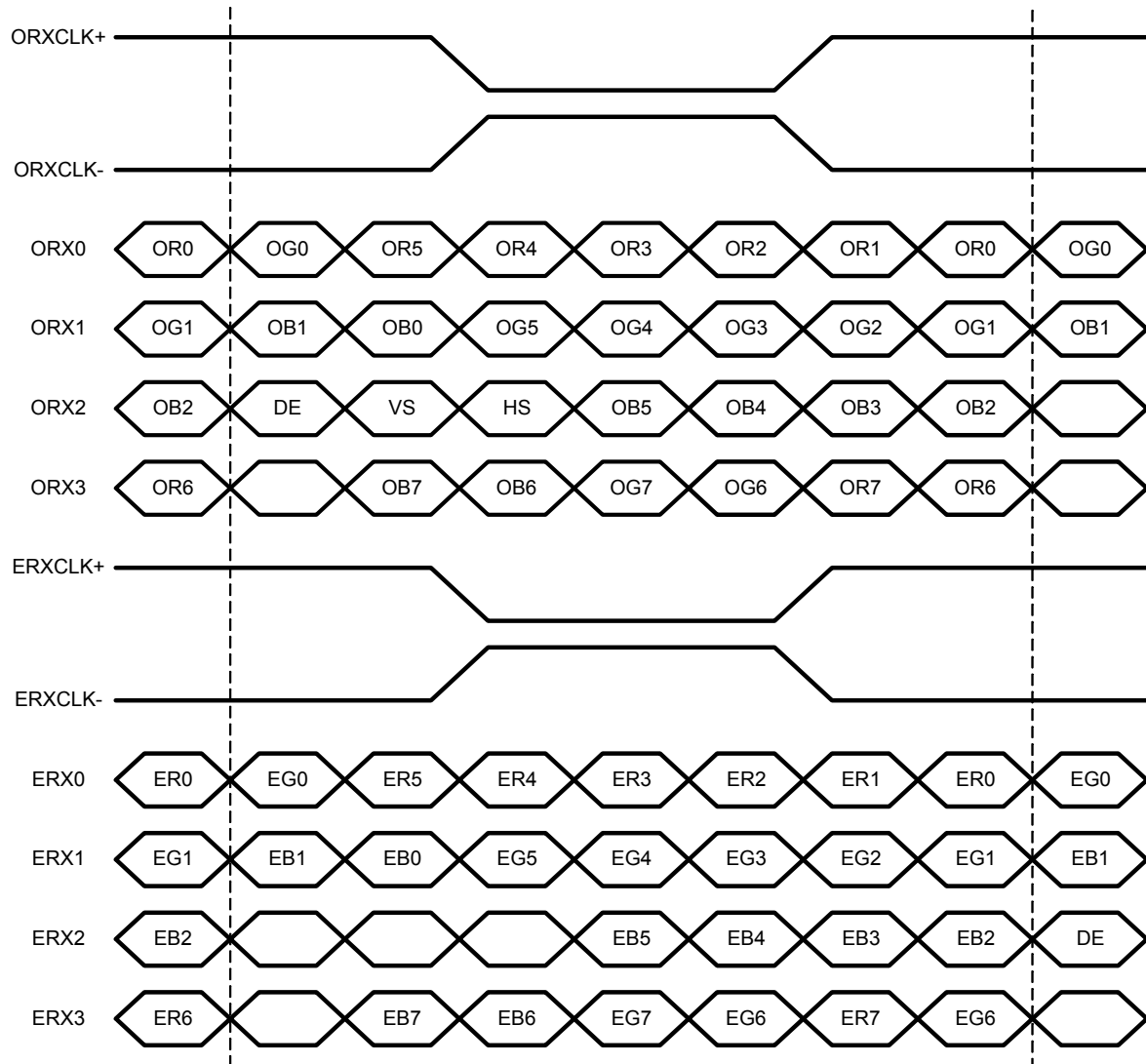
| Pin No. | Symbol    | Function              | Polarity |
|---------|-----------|-----------------------|----------|
| 0       | GND       | Ground                |          |
| 1       | RxEIN0-   | LVDS Even Channel 0   | Negative |
| 2       | RxEIN0+   | LVDS Even Channel 0   | Positive |
| 3       | RxEIN1-   | LVDS Even Channel 1   | Negative |
| 4       | RxEIN1+   | LVDS Even Channel 1   | Positive |
| 5       | RxEIN2-   | LVDS Even Channel 2   | Negative |
| 6       | RxEIN2+   | LVDS Even Channel 2   | Positive |
| 7       | GND       | Ground                |          |
| 8       | RxECLKIN- | LVDS Even Channel CLK | Negative |
| 9       | RxECLKIN+ | LVDS Even Channel CLK | Positive |
| 10      | RxEIN3-   | LVDS Even Channel 3   | Negative |
| 11      | RxEIN3+   | LVDS Even Channel 3   | Positive |
| 12      | RxOIN0-   | LVDS Odd Channel 0    | Negative |
| 13      | RxOIN0+   | LVDS Odd Channel 0    | Positive |
| 14      | GND       | Ground                |          |
| 15      | RxOIN1-   | LVDS Odd Channel 1    | Negative |
| 16      | RxOIN1+   | LVDS Odd Channel 1    | Positive |
| 17      | GND       | Ground                |          |
| 18      | RxOIN2-   | LVDS Odd Channel 2    | Negative |
| 19      | RxOIN2+   | LVDS Odd Channel 2    | Positive |
| 20      | RxOCLKIN- | LVDS Odd Channel CLK  | Negative |
| 21      | RxOCLKIN+ | LVDS Odd Channel CLK  | Positive |
| 22      | RxOIN3-   | LVDS Odd Channel 3    | Negative |
| 23      | RxOIN3+   | LVDS Odd Channel 3    | Positive |
| 24      | GND       | Ground                |          |
| 25      | NC        | NC                    |          |
| 26      | NC        | NC                    |          |
| 27      | NC        | NC                    |          |
| 28      | POWER     | +12V                  |          |
| 29      | POWER     | +12V                  |          |
| 30      | POWER     | +12V                  |          |
| 31      | GND       | Ground                |          |



Note:

1. All GND (ground) pins should be connected together and also be connected to the LCD's metal frame.
2. All Vcc (power input) pins should be connected together.

### LVDS Order





## Backlight Unit

CN1: S10B-PH-SM3-TB(JST)

| Pin № | Signal name | Feature |
|-------|-------------|---------|
| 1     | VDDDB       | +24V    |
| 2     | VDDDB       | +24V    |
| 3     | VDDDB       | +24V    |
| 4     | VDDDB       | +24V    |
| 5     | VDDDB       | +24V    |
| 6     | GNDB        | GND     |
| 7     | GNDB        | GND     |
| 8     | GNDB        | GND     |
| 9     | GNDB        | GND     |
| 10    | GNDB        | GND     |

CN2: S12B-PH-SM3-TB(JST)

| Pin № | Signal name | Feature        |
|-------|-------------|----------------|
| 1     | VDDDB       | +24V           |
| 2     | VDDDB       | +24V           |
| 3     | VDDDB       | +24V           |
| 4     | VDDDB       | +24V           |
| 5     | VDDDB       | +24V           |
| 6     | GNDB        | GND            |
| 7     | GNDB        | GND            |
| 8     | GNDB        | GND            |
| 9     | GNDB        | GND            |
| 10    | GNDB        | GND            |
| 11    | VDIM (※1)   | Bright control |
| 12    | BLON (※2)   | ON/OFF Signal  |

※1: Connection of brightness control terminal

Bright control by the voltage

3V : Min. brightness

0V : Max. brightness

※2: BLON Logic

H (5V): Back Light ON

L (0V): Back Light OFF

OPEN: Back Light OFF



### 3-3 Input Timing Specifications

This is the signal timing required at the input of the User connector. All of the interface signal timing should be satisfied with the following specifications for it's proper operation.

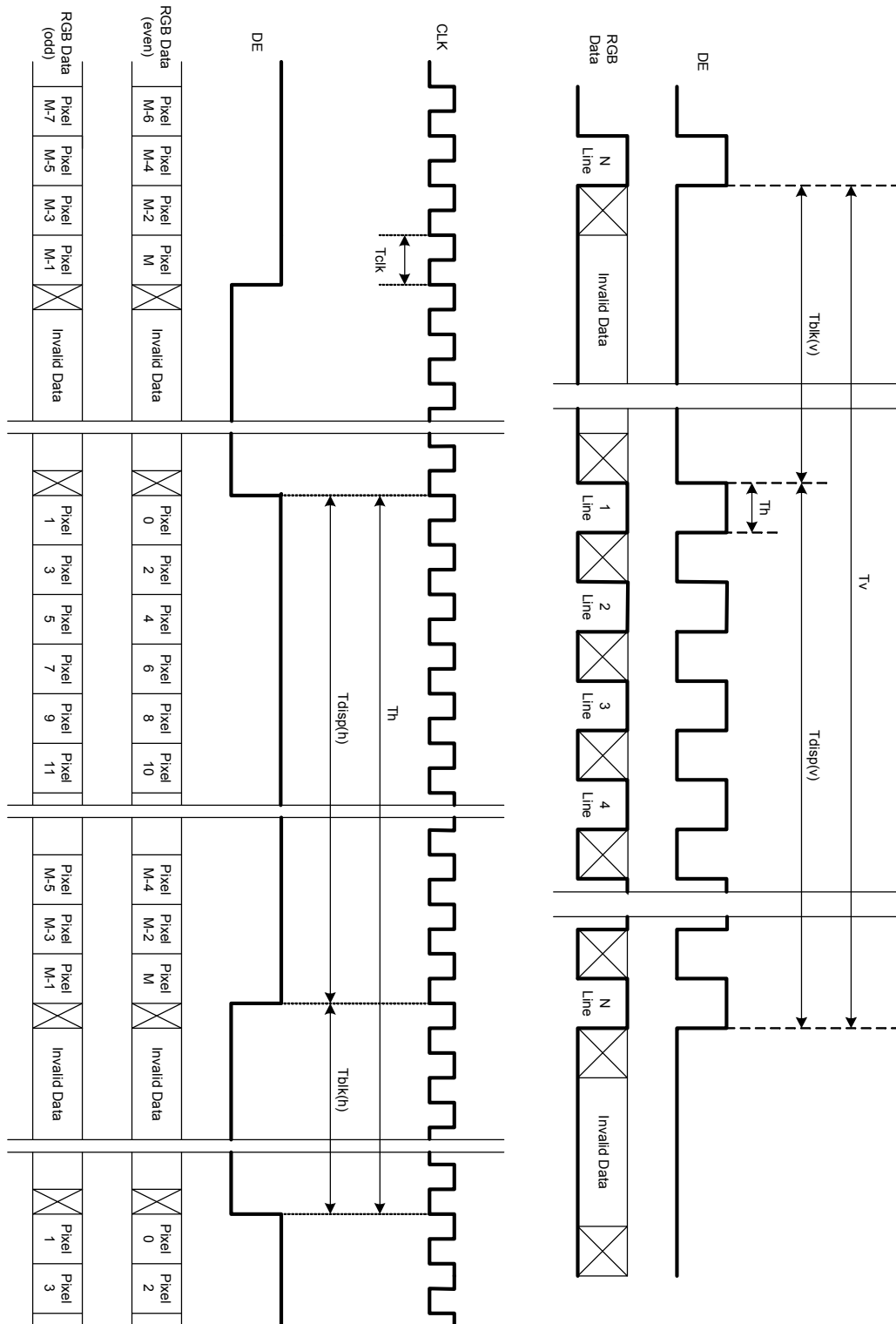
#### Timing Table

DE mode only (Frame Rate = 60 Hz)

| Signal             | Item      | Symbol   | Min.  | Typ.  | Max.  | Unit |
|--------------------|-----------|----------|-------|-------|-------|------|
| Vertical Section   | Period    | Tv       | 1098  | 1116  | 1134  | Th   |
|                    | Active    | Tdisp(V) | 1080  | 1080  | 1080  | Th   |
|                    | Blanking  | Tblk(V)  | 18    | 36    | 54    | Th   |
| Horizontal Section | Period    | Th       | 1000  | 1104  | 1250  | Tclk |
|                    | Active    | Tdisp(h) | 960   | 960   | 960   | Tclk |
|                    | Blanking  | Tblk(h)  | 40    | 144   | 290   | Tclk |
| Clock              | Period    | Tclk     | 15.15 | 13.51 | 11.76 | ns   |
|                    | Frequency | Freq     | 66    | 74    | 85    | MHz  |



## Signal Timing Waveforms





### 3-4 Color Input Data Reference

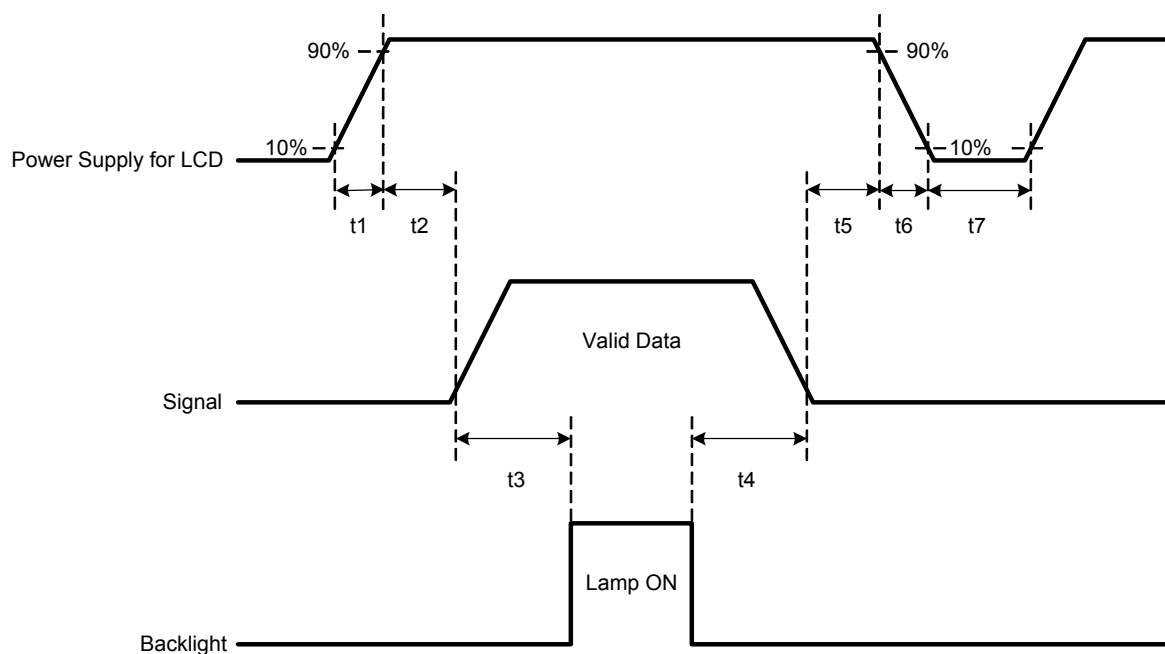
The brightness of each primary color (red, green and blue) is based on the 8 bit gray scale data input for the color; the higher the binary input, the brighter the color. The table below provides a reference for color versus data input.

**COLOR DATA REFERENCE**

| Color       |            | Input Color Data |    |    |    |     |    |    |    |       |    |    |    |     |    |    |    |      |    |    |    |     |    |    |    |
|-------------|------------|------------------|----|----|----|-----|----|----|----|-------|----|----|----|-----|----|----|----|------|----|----|----|-----|----|----|----|
|             |            | RED              |    |    |    |     |    |    |    | GREEN |    |    |    |     |    |    |    | BLUE |    |    |    |     |    |    |    |
|             |            | MSB              |    |    |    | LSB |    |    |    | MSB   |    |    |    | LSB |    |    |    | MSB  |    |    |    | LSB |    |    |    |
|             |            | R7               | R6 | R5 | R4 | R3  | R2 | R1 | R0 | G7    | G6 | G5 | G4 | G3  | G2 | G1 | G0 | B7   | B6 | B5 | B4 | B3  | B2 | B1 | B0 |
| Basic Color | Black      | 0                | 0  | 0  | 0  | 0   | 0  | 0  | 0  | 0     | 0  | 0  | 0  | 0   | 0  | 0  | 0  | 0    | 0  | 0  | 0  | 0   | 0  | 0  | 0  |
|             | Red(255)   | 1                | 1  | 1  | 1  | 1   | 1  | 1  | 1  | 0     | 0  | 0  | 0  | 0   | 0  | 0  | 0  | 0    | 0  | 0  | 0  | 0   | 0  | 0  | 0  |
|             | Green(255) | 0                | 0  | 0  | 0  | 0   | 0  | 0  | 0  | 1     | 1  | 1  | 1  | 1   | 1  | 1  | 1  | 0    | 0  | 0  | 0  | 0   | 0  | 0  | 0  |
|             | Blue(255)  | 0                | 0  | 0  | 0  | 0   | 0  | 0  | 0  | 0     | 0  | 0  | 0  | 0   | 0  | 0  | 0  | 1    | 1  | 1  | 1  | 1   | 1  | 1  | 1  |
|             | Cyan       | 0                | 0  | 0  | 0  | 0   | 0  | 0  | 0  | 1     | 1  | 1  | 1  | 1   | 1  | 1  | 1  | 1    | 1  | 1  | 1  | 1   | 1  | 1  | 1  |
|             | Magenta    | 1                | 1  | 1  | 1  | 1   | 1  | 1  | 1  | 0     | 0  | 0  | 0  | 0   | 0  | 0  | 0  | 1    | 1  | 1  | 1  | 1   | 1  | 1  | 1  |
|             | Yellow     | 1                | 1  | 1  | 1  | 1   | 1  | 1  | 1  | 1     | 1  | 1  | 1  | 1   | 1  | 1  | 1  | 0    | 0  | 0  | 0  | 0   | 0  | 0  | 0  |
|             | White      | 1                | 1  | 1  | 1  | 1   | 1  | 1  | 1  | 1     | 1  | 1  | 1  | 1   | 1  | 1  | 1  | 1    | 1  | 1  | 1  | 1   | 1  | 1  | 1  |
| RED         | RED(000)   | 0                | 0  | 0  | 0  | 0   | 0  | 0  | 0  | 0     | 0  | 0  | 0  | 0   | 0  | 0  | 0  | 0    | 0  | 0  | 0  | 0   | 0  | 0  | 0  |
|             | RED(001)   | 0                | 0  | 0  | 0  | 0   | 0  | 0  | 0  | 0     | 0  | 0  | 0  | 0   | 0  | 0  | 0  | 0    | 0  | 0  | 0  | 0   | 0  | 0  | 0  |
|             | ----       |                  |    |    |    |     |    |    |    |       |    |    |    |     |    |    |    |      |    |    |    |     |    |    |    |
|             | RED(254)   | 1                | 1  | 1  | 1  | 1   | 1  | 1  | 0  | 0     | 0  | 0  | 0  | 0   | 0  | 0  | 0  | 0    | 0  | 0  | 0  | 0   | 0  | 0  | 0  |
|             | RED(255)   | 1                | 1  | 1  | 1  | 1   | 1  | 1  | 1  | 0     | 0  | 0  | 0  | 0   | 0  | 0  | 0  | 0    | 0  | 0  | 0  | 0   | 0  | 0  | 0  |
| GREEN       | GREEN(000) | 0                | 0  | 0  | 0  | 0   | 0  | 0  | 0  | 0     | 0  | 0  | 0  | 0   | 0  | 0  | 0  | 0    | 0  | 0  | 0  | 0   | 0  | 0  | 0  |
|             | GREEN(001) | 0                | 0  | 0  | 0  | 0   | 0  | 0  | 0  | 0     | 0  | 0  | 0  | 0   | 0  | 0  | 1  | 0    | 0  | 0  | 0  | 0   | 0  | 0  | 0  |
|             | ---        |                  |    |    |    |     |    |    |    |       |    |    |    |     |    |    |    |      |    |    |    |     |    |    |    |
|             | GREEN(254) | 0                | 0  | 0  | 0  | 0   | 0  | 0  | 0  | 1     | 1  | 1  | 1  | 1   | 1  | 1  | 0  | 0    | 0  | 0  | 0  | 0   | 0  | 0  | 0  |
|             | GREEN(255) | 0                | 0  | 0  | 0  | 0   | 0  | 0  | 0  | 1     | 1  | 1  | 1  | 1   | 1  | 1  | 0  | 0    | 0  | 0  | 0  | 0   | 0  | 0  | 0  |
| BLUE        | BLUE(000)  | 0                | 0  | 0  | 0  | 0   | 0  | 0  | 0  | 0     | 0  | 0  | 0  | 0   | 0  | 0  | 0  | 0    | 0  | 0  | 0  | 0   | 0  | 0  | 0  |
|             | BLUE(001)  | 0                | 0  | 0  | 0  | 0   | 0  | 0  | 0  | 0     | 0  | 0  | 0  | 0   | 0  | 0  | 0  | 0    | 0  | 0  | 0  | 0   | 0  | 0  | 1  |
|             | -----      |                  |    |    |    |     |    |    |    |       |    |    |    |     |    |    |    |      |    |    |    |     |    |    |    |
|             | BLUE(254)  | 0                | 0  | 0  | 0  | 0   | 0  | 0  | 0  | 0     | 0  | 0  | 0  | 0   | 0  | 0  | 0  | 1    | 1  | 1  | 1  | 1   | 1  | 1  | 0  |
|             | BLUE(255)  | 0                | 0  | 0  | 0  | 0   | 0  | 0  | 0  | 0     | 0  | 0  | 0  | 0   | 0  | 0  | 0  | 1    | 1  | 1  | 1  | 1   | 1  | 1  | 1  |



### 3-5 Power Sequence



| Parameter | Values |      |      | Units |
|-----------|--------|------|------|-------|
|           | Min.   | Typ. | Max. |       |
| t1        | 470    | -    | 1000 | us    |
| t2        | 20     | -    | 50   | ms    |
| t3        | 500    | -    | -    | ms    |
| t4        | 500    | -    | -    | ms    |
| t5        | 20     | -    | 50   | ms    |
| t6        | 0.47   | -    | 30   | ms    |
| t7        | 1      | -    | -    | s     |

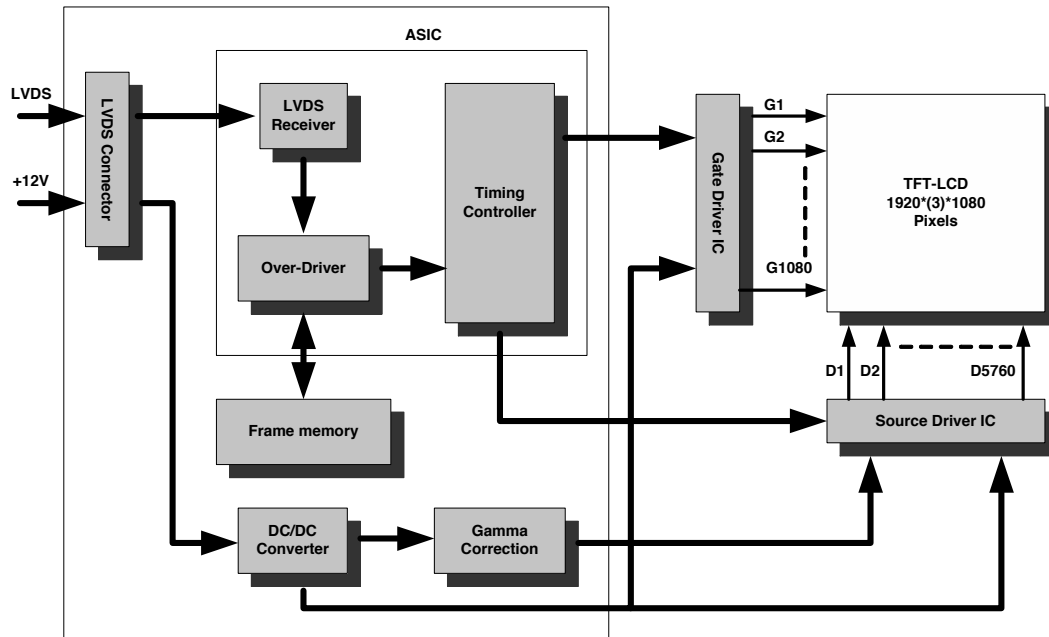
**Note:** User should follow the power on/off sequence and the rising/falling time to avoid miss operation of the panel.



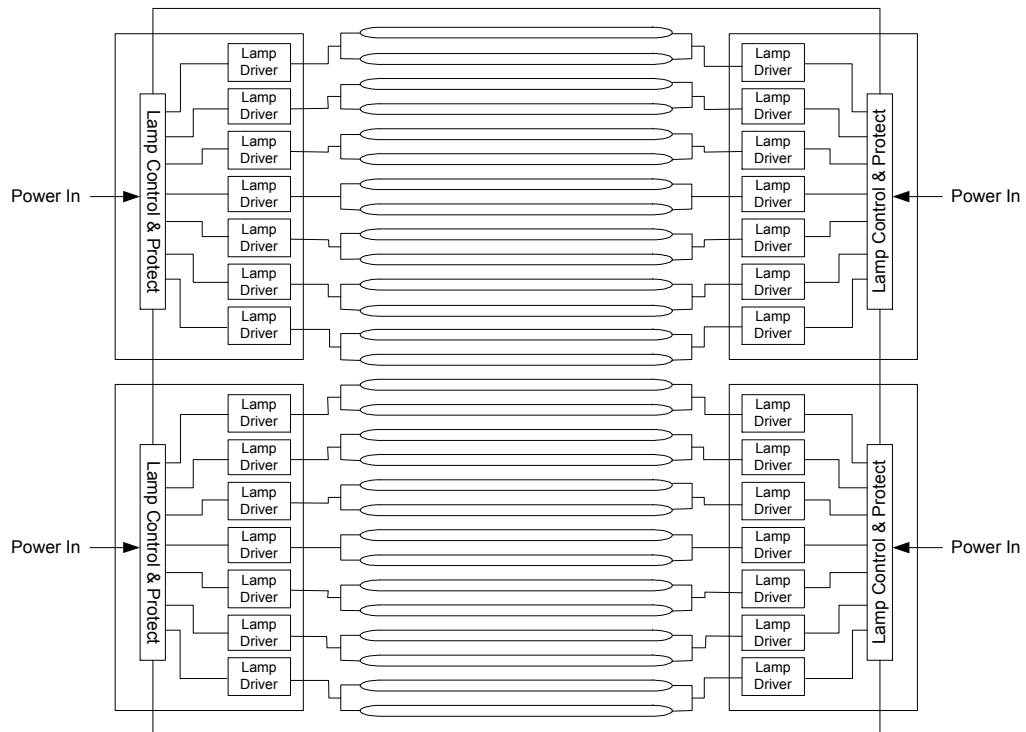


## 4. Block Diagram

### 4-1 TFT-LCD



### 4-2 Backlight unit





## 5. Optical Specification

Optical characteristics are determined after the unit has been 'ON' and stable for approximately 30 minutes in a dark environment at 25°C. The values specified are at an approximate distance 50cm from the LCD surface at a viewing angle of  $\Phi$  and  $\theta$  equal to 0°.

Figure.1 presents additional information concerning the measurement equipment and method.

| Parameter                |                                     | Symbol                        | Values    |       |           | Units             | Notes                  |
|--------------------------|-------------------------------------|-------------------------------|-----------|-------|-----------|-------------------|------------------------|
|                          |                                     |                               | Min.      | Typ.  | Max.      |                   |                        |
| Contrast Ratio           |                                     | CR                            |           | 600   |           |                   | 1                      |
| Surface Luminance, white |                                     | LWH                           |           | 600   |           | cd/m <sup>2</sup> | 2                      |
| Luminance Variation      |                                     | $\delta_{\text{WHITE (9 p)}}$ |           |       | 1.33      |                   | 3                      |
| Response Time            |                                     | Tg                            |           | 8     |           | ms                | Gray to Gray, average, |
|                          |                                     | Tr                            |           | 15    |           |                   |                        |
|                          |                                     | Td                            |           | 5     |           |                   | 4                      |
| Color Chromaticity       | RED                                 | R <sub>x</sub>                | Typ.-0.03 | 0.660 | Typ.+0.03 |                   |                        |
|                          |                                     | R <sub>y</sub>                |           | 0.326 |           |                   |                        |
|                          | GREEN                               | G <sub>x</sub>                |           | 0.283 |           |                   |                        |
|                          |                                     | G <sub>y</sub>                |           | 0.580 |           |                   |                        |
|                          | BLUE                                | B <sub>x</sub>                |           | 0.140 |           |                   |                        |
|                          |                                     | B <sub>y</sub>                |           | 0.073 |           |                   |                        |
|                          | WHITE                               | W <sub>x</sub>                |           | 0.280 |           |                   |                        |
|                          |                                     | W <sub>y</sub>                |           | 0.290 |           |                   |                        |
| Viewing Angle            | x axis, right( $\varphi=0^\circ$ )  | $\theta_r$                    |           | 85    |           | Degree            | 5                      |
|                          | x axis, left( $\varphi=180^\circ$ ) | $\theta_l$                    |           | 85    |           |                   |                        |
|                          | y axis, up( $\varphi=90^\circ$ )    | $\theta_u$                    |           | 85    |           |                   |                        |
|                          | y axis, down ( $\varphi=0^\circ$ )  | $\theta_d$                    |           | 85    |           |                   |                        |



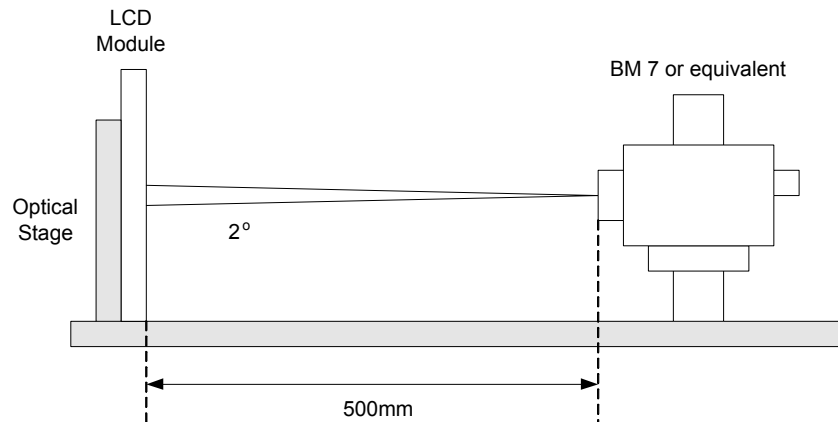
Note:

1. Contrast Ratio (CR) is defined mathematically as:

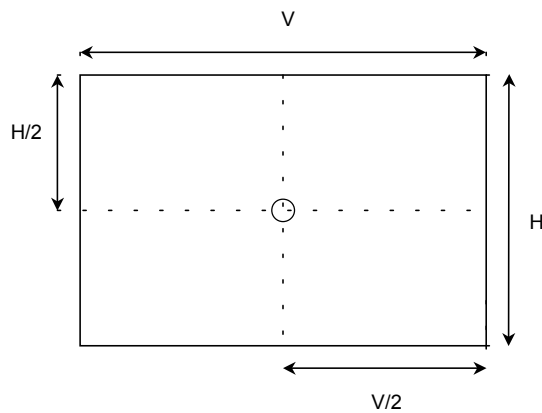
$$\text{Contrast Ratio} = \frac{\text{Surface Luminance with all white pixels}}{\text{Surface Luminance with all black pixels}}$$

2. Surface luminance is luminance value at point 1 across the LCD surface 50cm from the surface with all pixels displaying white. For more information see FIG 2. When  $I_{BL} = 6.5\text{mA}$ ,  $L_{WH} = 600\text{cd/m}^2$  (typ.)  $L_{WH} = L_{on1}$ , where  $L_{on1}$  is the luminance with all pixels displaying white at center location.
3. The variation in surface luminance,  $\delta_{WHITE}$  is defined (center of Screen) as:  
$$\delta_{WHITE(9P)} = \text{Maximum}(L_{on1}, L_{on2}, \dots, L_{on9}) / \text{Minimum}(L_{on1}, L_{on2}, \dots, L_{on9})$$
  
For more information see FIG 3
4. Response time is the time required for the display to transition from white to black (Rise Time,  $T_r$ ) and from black to white (Decay Time,  $T_d$ ). For additional information see FIG 4.
5. Viewing angle is the angle at which the contrast ratio is greater than 5. The angles are determined for the horizontal or x axis and the vertical or y axis with respect to the z axis which is normal to the LCD surface. For more information see FIG 5.

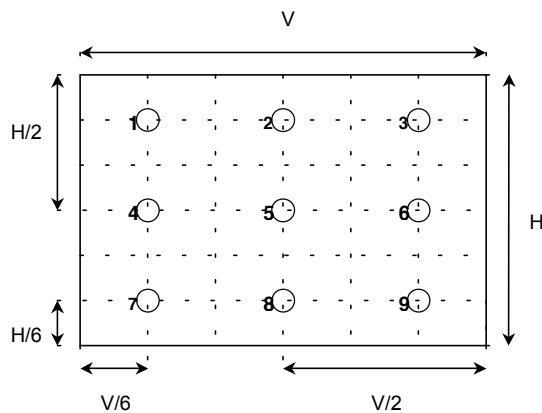
**Figure .1**



**FIG. 2 Luminance**

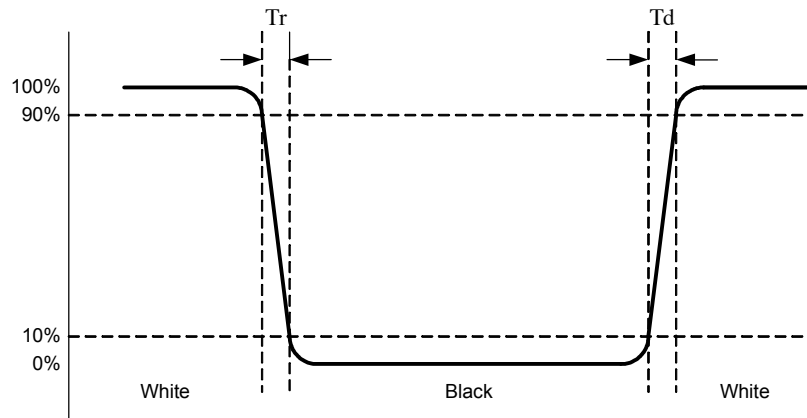


**FIG. 3 Luminance variation**

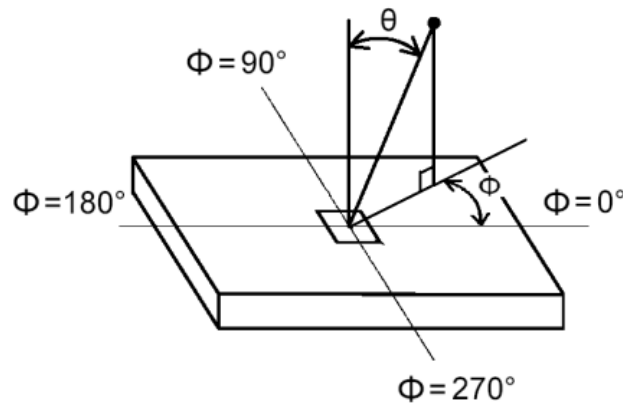


#### FIG.4 Response Time

The response time is defined as the following figure and shall be measured by switching the input signal for “black” and “white”.



#### FIG.5 Viewing angle

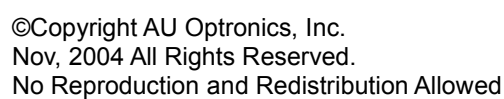




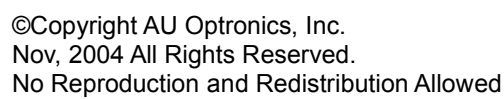
## 6. Mechanical Characteristics

The contents provide general mechanical characteristics for the model T460HW01. In addition the figures in the next page are detailed mechanical drawing of the LCD.

|                            |                   |                         |
|----------------------------|-------------------|-------------------------|
| <b>Outline Dimension</b>   | <b>Horizontal</b> | 1109.34mm               |
|                            | <b>Vertical</b>   | 654.56mm                |
|                            | <b>Depth</b>      | 47.68mm (with inverter) |
| <b>Bezel Area</b>          | <b>Horizontal</b> | 1025.52mm               |
|                            | <b>Vertical</b>   | 579.48mm                |
| <b>Active Display Area</b> | <b>Horizontal</b> | 1019.52mm               |
|                            | <b>Vertical</b>   | 573.48mm                |
| <b>Weight</b>              | 15000g (Typ.)     |                         |
| <b>Surface Treatment</b>   | Anti-Glare        |                         |



23/30







## 7. Reliability

Environment test condition

| No | Test Item                         | Condition   |
|----|-----------------------------------|---|
| 1  | High temperature storage test     | Ta=60℃ 240h   |
| 2  | Low temperature storage test      | Ta= -20℃ 240h   |
| 3  | High temperature operation test   | Ta=50℃ 50%RH 240h   |
| 4  | Low temperature operation test    | Ta=0℃ 240h  |
| 5  | Vibration test<br>(non-operating) | Wave form: random<br>Vibration level: 1.5G RMS<br>Bandwidth: 10-300Hz,<br>Sweep time: 10min<br>Duration: X, Y, Z 30min<br>One time each direction |
| 6  | Shock test<br>(non-operating)     | Shock level: 50G<br>Waveform: half sine wave, 11ms<br>Direction: ±X, ±Y, ±Z<br>One time each direction  |
| 7  | Vibration test<br>(with carton)   | Random<br>Vibration:10~200Hz,1.5G,30minutes<br>in each X,Y,Z direction  |

There should be no change which might affect the practical display function when the display quality test is conducted under normal operating condition.



## **8. International Standard**

### **8-1. Safety**

1. UL 60950, Third Edition, Underwriters Laboratories, Inc. Dec. 11, 2000.  
Standard for Safety of Information Technology Equipment, including Electrical Business Equipment.
2. CAN/CSA C22.2 No. 60950, Third Edition, Canadian Standards Association, Dec. 1, 2000  
Standard for Safety of Information Technology Equipment Including Electrical Business Equipment.
3. EN60950: 2000, Third Edition
4. IEC 60950:1999, Third Edition  
European Committee for Electrotechnical Standardization (CENELEC)  
EUROPEAN STANDARD for Safety of Information Technology Equipment Including Electrical Business Equipment.

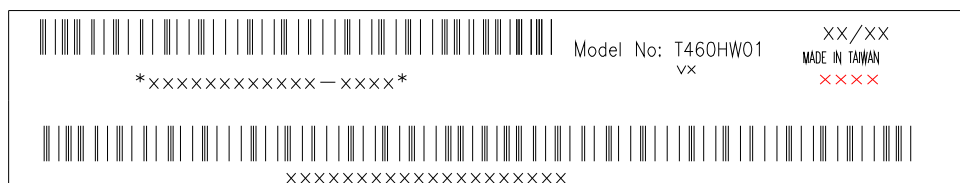
### **8-2. EMC**

1. ANSI C63.4 "Methods of Measurement of Radio-Noise Emissions from Low-Voltage Electrical and Electrical Equipment in the Range of 9kHz to 40GHz. "American National standards Institute (ANSI), 1992
2. C.I.S.P.R "Limits and Methods of Measurement of Radio Interface Characteristics of Information Technology Equipment." International Special committee on Radio Interference.
3. EN 55022 "Limits and Methods of Measurement of Radio Interface Characteristics of Information Technology Equipment." European Committee for Electrotechnical Standardization. (CENELEC), 1998

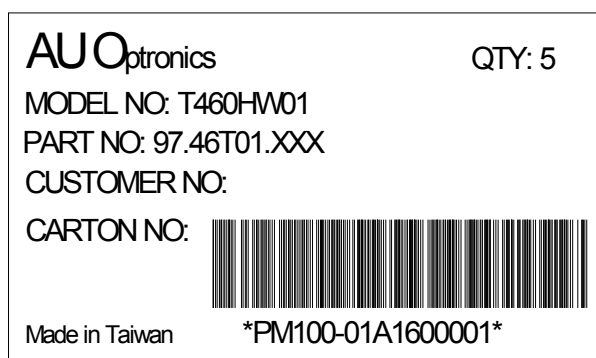


## 9. Packing

Label Sample

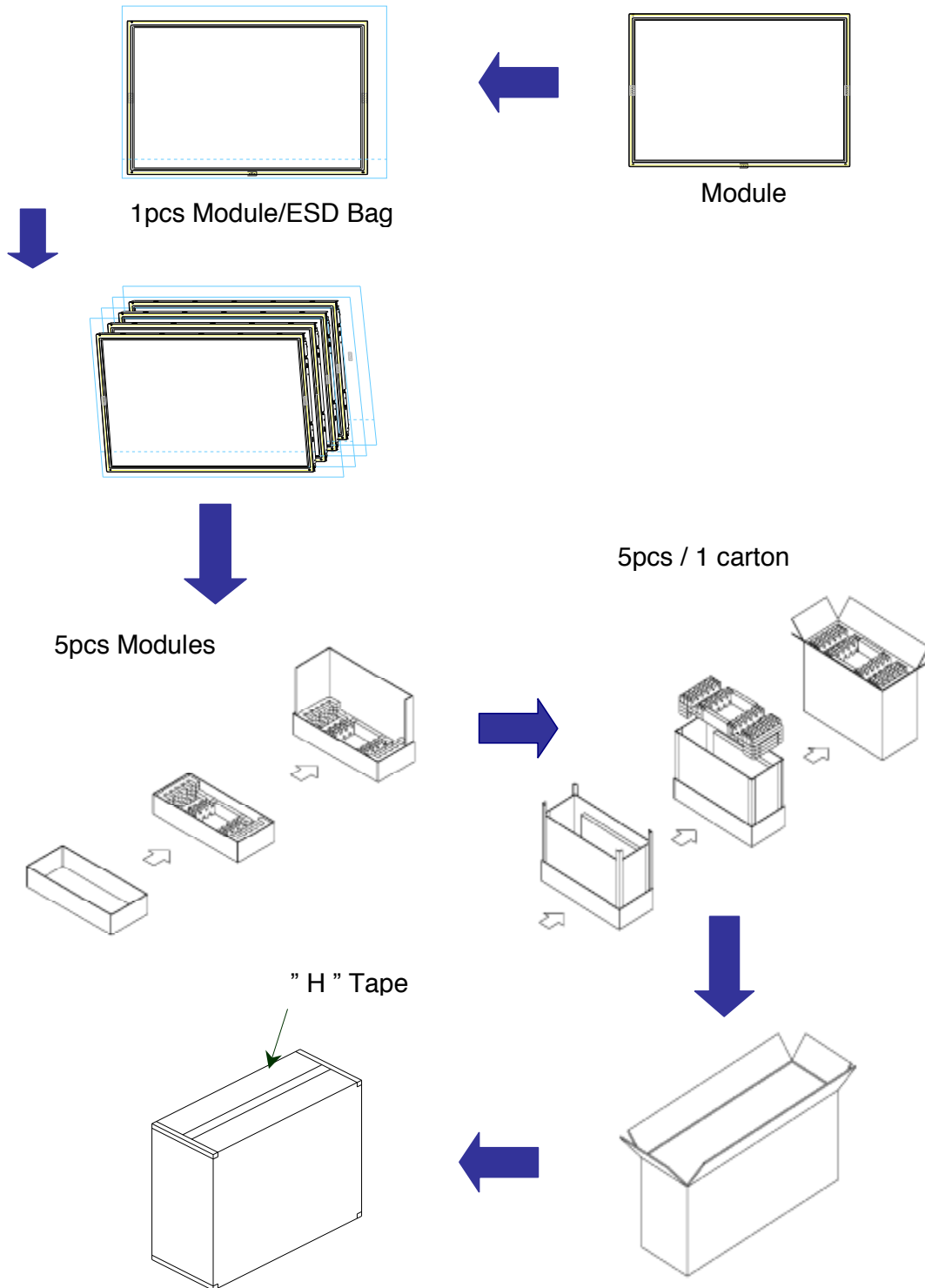


Carton Label





Carton Size



## 10. PRECAUTIONS

Please pay attention to the followings when you use this TFT LCD module.

### 10-1 MOUNTING PRECAUTIONS

1. You must mount a module using holes arranged in four corners or four sides.
2. You should consider the mounting structure so that uneven force (ex. Twisted stress) is not applied to module. And the case on which a module is mounted should have sufficient strength so that external force is not transmitted directly to the module.
3. Please attach the surface transparent protective plate to the surface in order to protect the polarizer. Transparent protective plate should have sufficient strength in order to the resist external force.
4. You should adopt radiation structure to satisfy the temperature specification.
5. Acetic acid type and chlorine type materials for the cover case are not desirable because the former generates corrosive gas of attacking the polarizer at high temperature and the latter causes circuit break by electro-chemical reaction.
6. Do not touch, push or rub the exposed polarizers with glass, tweezers or anything harder than HB pencil lead. And please do not rub with dust clothes with chemical treatment. Do not touch the surface of polarizer for bare hand or greasy cloth. (Some cosmetics are detrimental to the polarizer.)
7. When the surface becomes dusty, please wipe gently with absorbent cotton or other soft materials like chamois soaks with petroleum benzene. Normal-hexane is recommended for cleaning the adhesives used to attach front/ rear polarizers. Do not use acetone, toluene and alcohol because they cause chemical damage to the polarizer.
8. Wipe off saliva or water drops as soon as possible. Their long time contact with polarizer causes deformations and color fading.
9. Do not open the case because inside circuits do not have sufficient strength.

### 10-2 OPERATING PRECAUTIONS

1. The spike noise causes the mis-operation of circuits. It should be lower than following voltage:  $V=\pm 200\text{mV}$  (Over and under shoot voltage)
2. Response time depends on the temperature. (In lower temperature, it becomes longer..)
3. Brightness depends on the temperature. (In lower temperature, it becomes lower.) And in lower temperature, response time (required time that brightness is stable after turned on) becomes longer.
4. Be careful for condensation at sudden temperature change. Condensation makes damage to polarizer or electrical contacted parts. And after fading condensation, smear

or spot will occur.

5. When fixed patterns are displayed for a long time, remnant image is likely to occur.
6. Module has high frequency circuits. Sufficient suppression to the electromagnetic interference shall be done by system manufacturers. Grounding and shielding methods may be important to minimize the interface.

### **10-3 ELECTROSTATIC DISCHARGE CONTROL**

Since a module is composed of electronic circuits, it is not strong to electrostatic discharge. Make certain that treatment persons are connected to ground through wrist band etc. And don't touch interface pin directly.

### **10-4 PRECAUTIONS FOR STRONG LIGHT EXPOSURE**

Strong light exposure causes degradation of polarizer and color filter.

### **10-5 STORAGE**

When storing modules as spares for a long time, the following precautions are necessary.

1. Store them in a dark place. Do not expose the module to sunlight or fluorescent light. Keep the temperature between 5°C and 35°C at normal humidity.
2. The polarizer surface should not come in contact with any other object. It is recommended that they be stored in the container in which they were shipped.
- 3.

### **10-6 HANDLING PRECAUTIONS FOR PROTECTION FILM**

1. The protection film is attached to the bezel with a small masking tape. When the protection film is peeled off, static electricity is generated between the film and polarizer. This should be peeled off slowly and carefully by people who are electrically grounded and with well ion-blown equipment or in such a condition, etc.
2. When the module with protection film attached is stored for a long time, sometimes there remains a very small amount of glue still on the Bezel after the protection film is peeled off.
3. You can remove the glue easily. When the glue remains on the Bezel or its vestige is recognized, please wipe them off with absorbent cotton waste or other soft material like chamois soaked with normal-hexane.