

Ad Controller Board

LQ035NC111 Video ADBOARD

Before using the A/D board, please read this manual thoroughly, and retain it for future reference.

It will help you to use the A/D board easily.

Contents

Content

1. Overview
2. Main characteristics
3. Interface definition and Interface Electrical Requirements
4. Structure Size
5. Default mode of the table to support
6. Key components
7. Appendix

1. Overview

The driver board for the LQ035NC111 LCD panels, The program using the high level of integration of Taiwan's core program of macro-driven IC, external components, debugging convenience, image quality good advantage
The driver board provides two way video signal input voltage DC12V, input supply using the super power-management IC, board-driven work to ensure the strongest stability performance, and can 8V-14V.
Wide voltage range of normal working
Support to direct-drive LCD screen with LED backlight LCD.

2. Main characteristics

According to the system board supports specification (audio and key part of the customer asked to choose or change)
Input signal:

VIDEO (CVBS)	PAL, NTSC format
Color	YES
Line Sync Range	NO
Field Sync Range	NO
Output signal	656 Signal
Audio output power	NO
Control buttons	customer's own definition
OSD menu	NO OSD MENU
Power Input	12V (+ / -0.6) (DC)
Supply operation	Power-work, Native mode
Size	76mm * 64mm * 7mm
Plug and Play	Yes

3. Interface definition and Interface Electrical Requirements

1. Key board operator interface: (can be defined according to customer's request):
2. AV interface,
3. Power input interface
4. LCD Screen Interface

4. Structure size

According to the system board PCB-related foot, specifications 76mm * 64mm * 7mm

5. Default mode of the table to support

Input	Input	Mode frequency (KHZ)	Field frequency (HZ)
VGA	PAL	15.6	50
CVBS	NTSC	15.6	60

6. Key components

5150

7. Appendix

Interface Definition Table

JP2 (power supply, AV signal line input) 7PIN/2.0

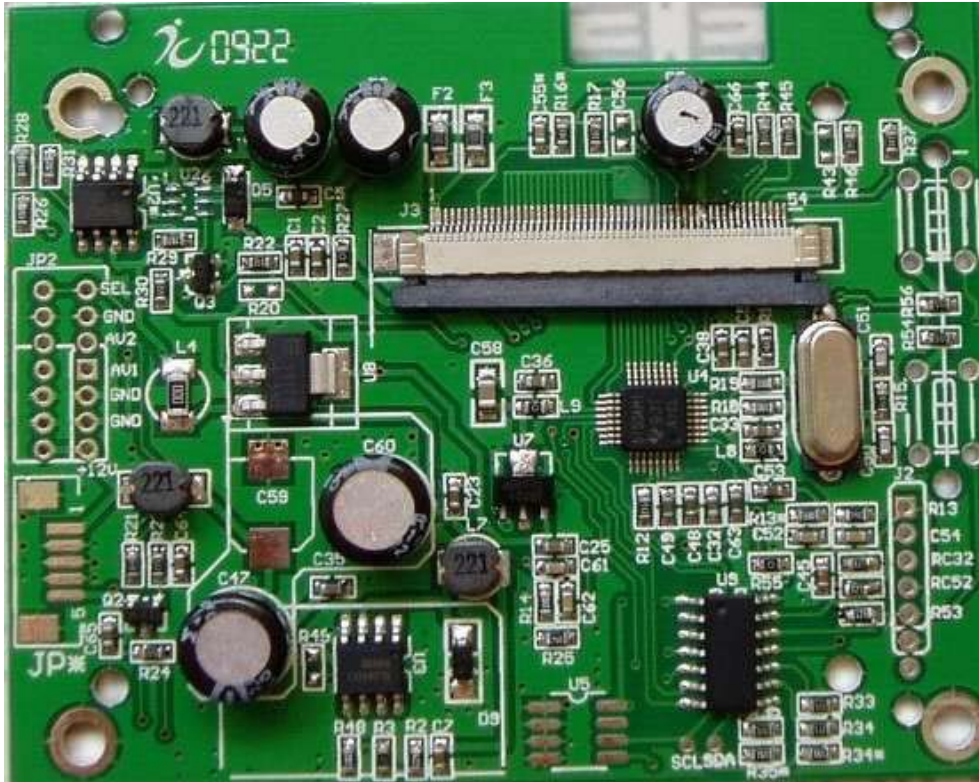
Pin	Details	Description
1	12V	6V-16V
2	GND	Ground
3	GND	Ground
4	AV1	Video 1 channel
5	AV2	Video 2 channel
6	GND	Ground
7	Set	AV1, AV2 converted to use, L -AV1, H- AV2

J2 (MCU interface) 6PIN/2.0, related to the role of MCU control

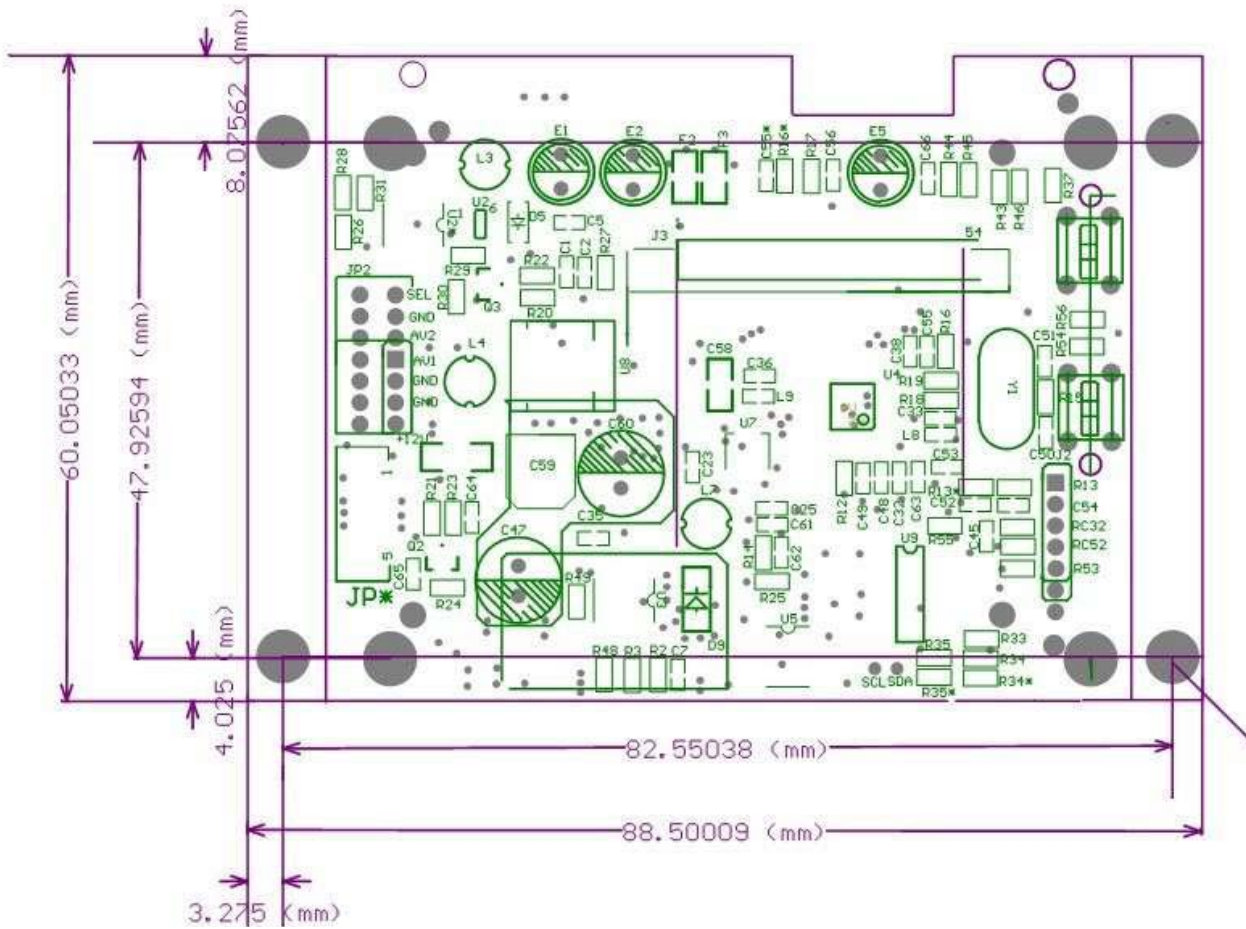
Pin	Symbol	I/O	Function
1	VBL-	I	Backlight LED Ground
2	VBL-	I	Backlight LED Ground
3	VBL+	I	Backlight LED Power
4	VBL+	I	Backlight LED Power
5	Y1	I	Top electrode ,
6	X1	I	Right electrode
7	NC		Not Use
8	/RESET	-	Hardware Reset
9	SPENA	I	SPI Interface Data Enable Signal
10	SPCLK	I	SPI Interface Data Clock
11	SPDAT	I	SPI Interface Data
12	B0	I	Blue Data Bit 0
13	B1	I	Blue Data Bit 1
14	B2	I	Blue Data Bit 2
15	B3	I	Blue Data Bit 3
16	B4	I	Blue Data Bit 4
17	B5	I	Blue Data Bit 5
18	B6	I	Blue Data Bit 6
19	B7	I	Blue Data Bit 7
20	G0	I	Green Data Bit 0
21	G1	I	Green Data Bit 1

21	G1	I	Green Data Bit1
22	G2	I	Green Data Bit2
23	G3	I	Green Data Bit3
24	G4	I	Green Data Bit4
25	G5	I	Green Data Bit5
26	G6	I	Green Data Bit6
27	G7	I	Green Data Bit7
28	R0	I	Red Data Bit0 /DX0
29	R1	I	Red Data Bit1 /DX1
30	R2	I	Red Data Bit2 /DX2
31	R3	I	Red Data Bit3 /DX3
32	R4	I	Red Data Bit4 /DX4
33	R5	I	Red Data Bit5 /DX5
34	R6	I	Red Data Bit6 /DX6
35	R7	I	Red Data Bit7 /DX7
36	HSYNC	I	Horizontal Sync Input
37	VSYNC	I	Vertical Sync Input
38	DCLK	I	Dot Data Clock
39	NC		Not Use
40	NC		Not Use
41	Vcc	I	Digital Power
42	Vcc	I	Digital Power
43	Y2	I	Bottom electrode
44	X2	I	Left electrode
45	NC		Not Use
46	NC	-	Not Use
47	NC		Not Use
48	IF2	I	Control the input data format /float
49	IF1	I	Control the input data format
50	IF0	I	Control the input data format
51	NC		Not Use
52	DE	I	Data Enable Input
53	GND	I	Ground
54	GND	I	Ground

Driver Board Appearance



Driver Board Appearance Size Chart



***Note Some driver board

Input video signal type PAL NTSC composite video 1V_{pp}-75 Europe 4

Temperature -10 - +40 Degrees

Input voltage 5.3V-18V, current is 130mA (12V).

***** Note that the access law and the power supply polarity, so as not to burn circuit boards, resulting in unnecessary losses, and pay attention to your signal

The source signal is generated and the board needs more drivers signal parameters consistent with normal work.

In order to call our technical department, or you contact the relevant business, we will give you the first time responses and Service

Reasons related to technical issues,