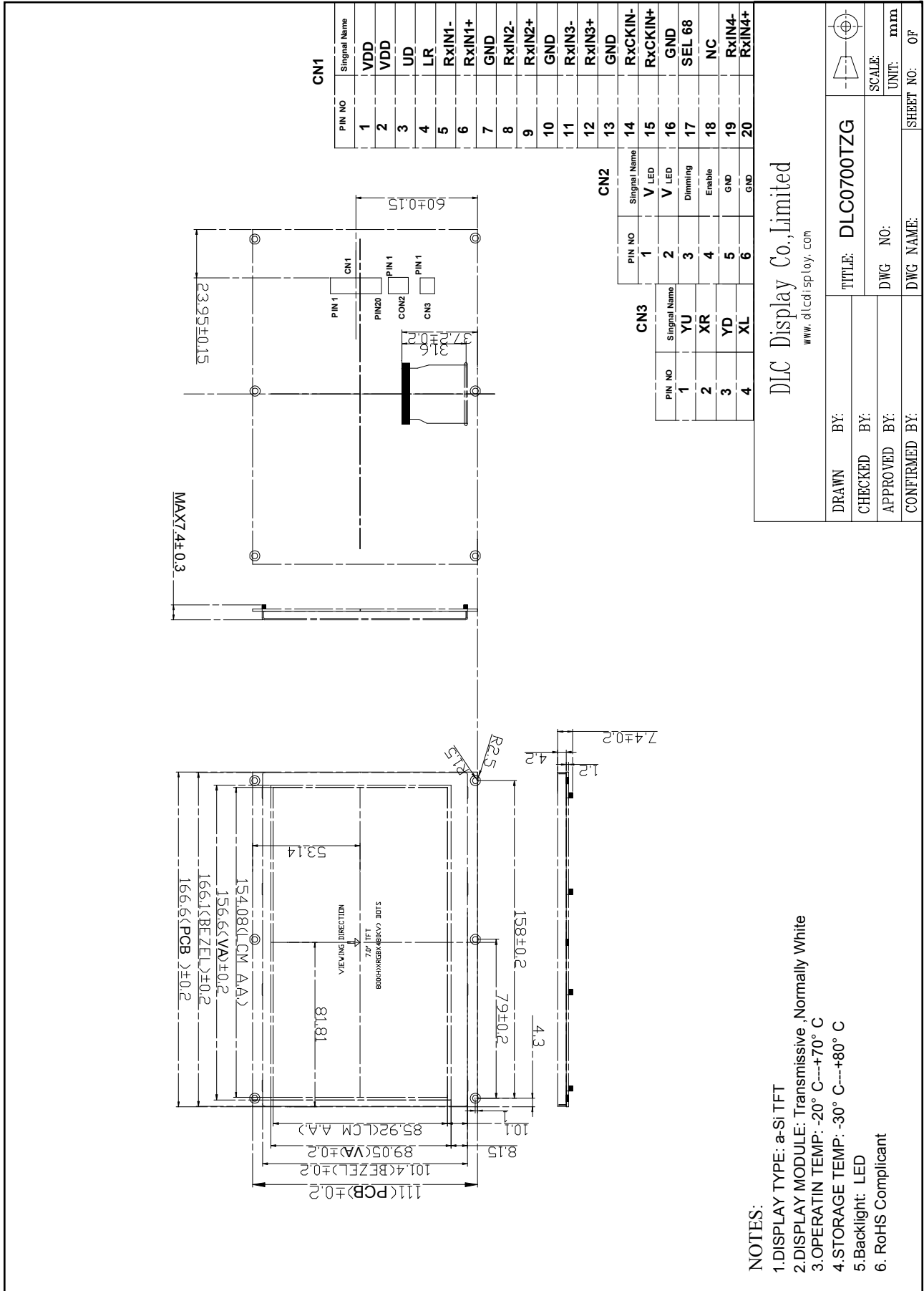


Outline Drawing



NOTES:

- 1.DISPLAY TYPE: a-Si TFT
- 2.DISPLAY MODULE: Transmissive ,Normally White
- 3.OPERATING TEMP: -20° C---+70° C
- 4.STORAGE TEMP: -30° C---+80° C
- 5.Backlight: LED
6. RoHS Compliant

DLC Display Co., Limited
 www.dlcdisplay.com

DRAWN BY:	TITLE: DLC0700TZG	SCALE:	mm
CHECKED BY:	DWG NO:	UNIT:	mm
APPROVED BY:	DWG NAME:	SHEET NO:	OF
CONFIRMED BY:			