
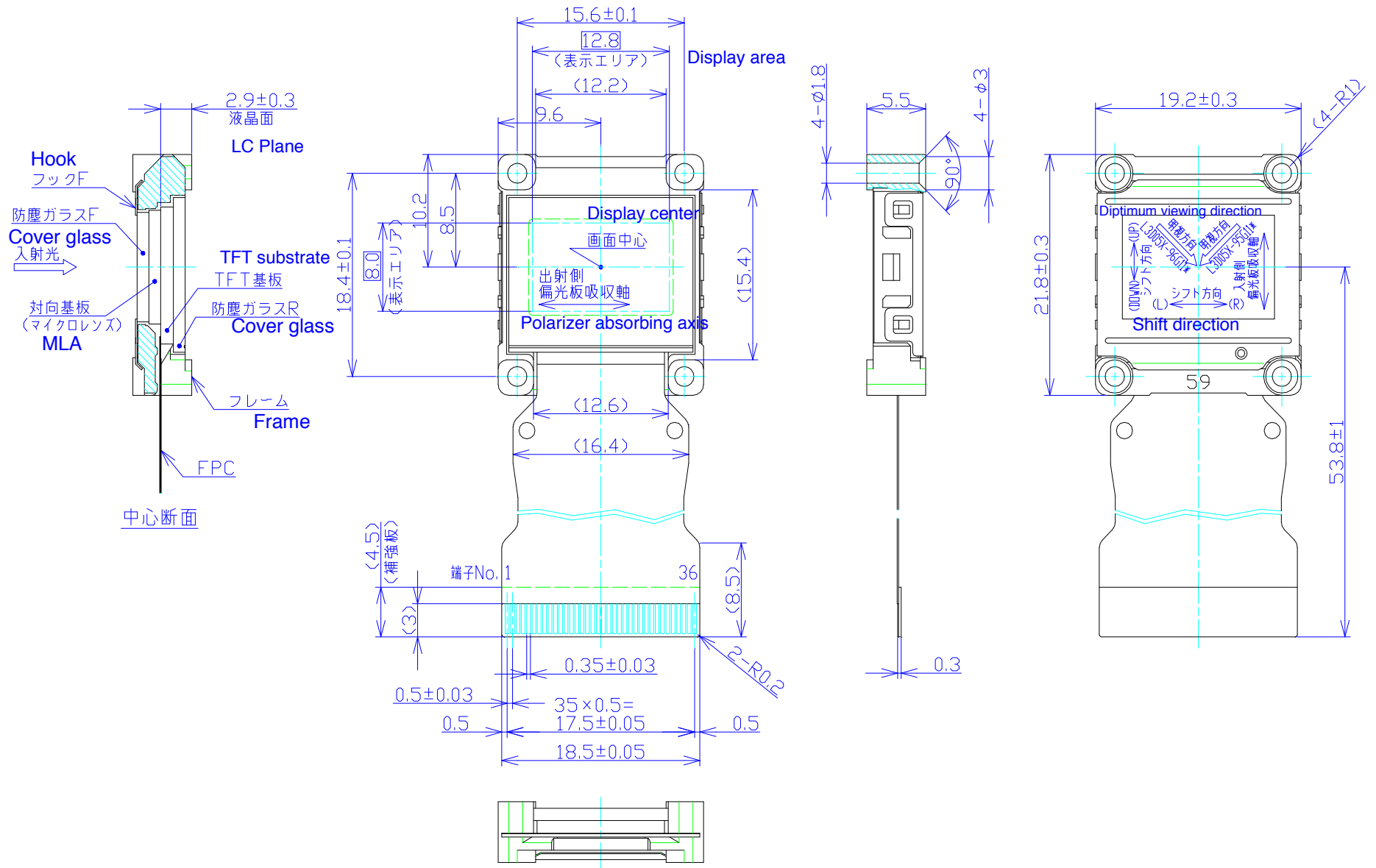


## L3D05X-9x LCD module

### ■ Basic specifications

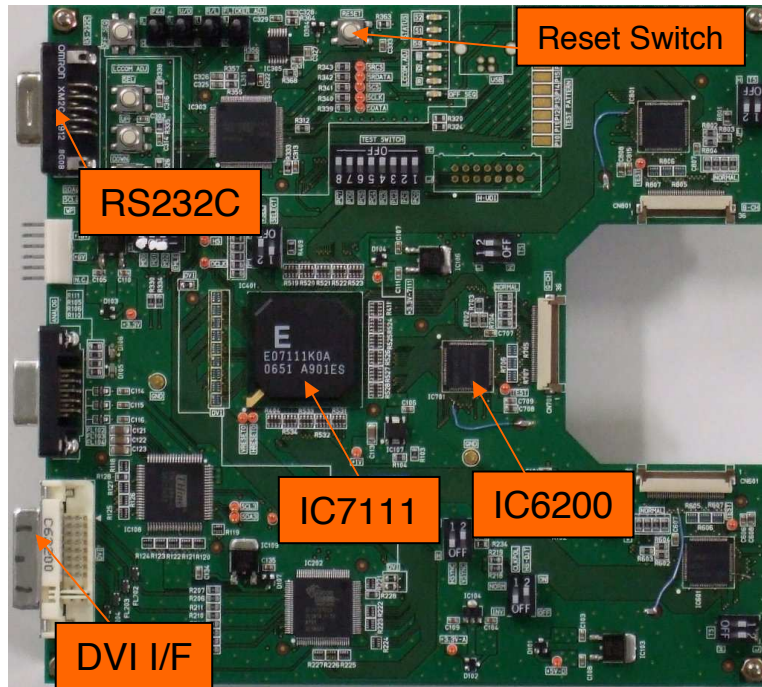
Photo		
Technology		D8
Screen size	Diagonal	1.5cm(0.59")
	H x V (mm)	12.80 x 8.00
Pixel number	H x V	1280 x 800 (WXGA)
Pixel pitch	H x V ( $\mu$ m)	10.0 x 10.0
Outside Dimension	H x V x D (mm)	19.2 x 21.8 x 5.5
Aspect Ratio		16:10
Display Colors		Monochrome
Micro Lens Array		With Micro Lens Array
Liquid Crystal		VA mode

# Dimensional Outline Drawing

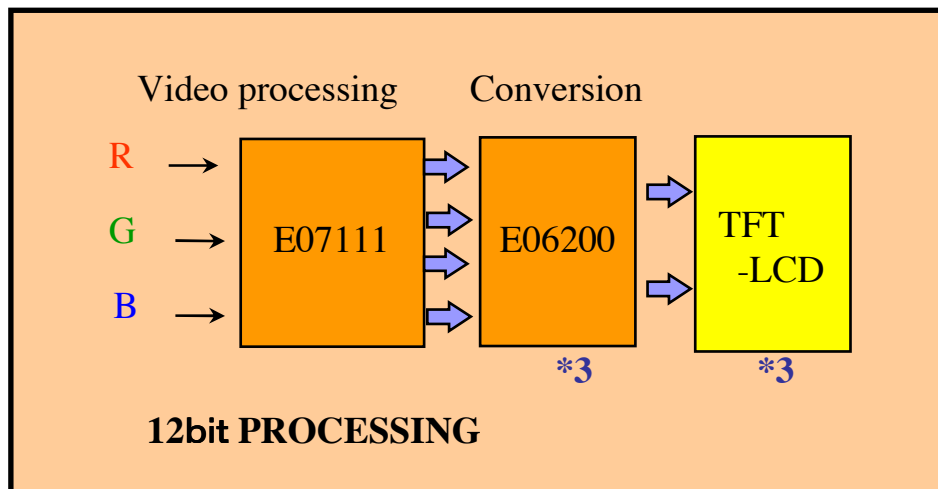


## ● E73A

• external view (dimension: W170mm x H160mm)



• IC Block Diagram



- 1) Evaluation board is accompanied by the following documents.  
"instruction book", "config file (a sheet of FD)"
- 2) LCD Panel is not attached. Please purchase it separately.
- 3) Extra preparation by customer
  - a. DC stabilized power supply
  - b. Video signal source (Analog RGB/DVI)
  - c. RS232C cable (for configuration)
  - d. Optical source for evaluation, polarizer etc.

### Usage notice

- a. Information in these documents is subject to be changed without notice.
- b. None of the documents contained herein may be copied or reprinted, whether in full or in part, without prior notice.
- c. Mentioned contents of the document were described as of August 2012.

<Contact>

©SEIKO EPSON CORPORATION 2012  
Visual Device Design & Engineering Department  
Visual Products Operations Division  
1010 Fujimi, Fujimi-machi, Suwa-gun, Nagano-ken  
399-0295 JAPAN

TEL 0266-62-6528

<http://www.epson.jp/device/https>