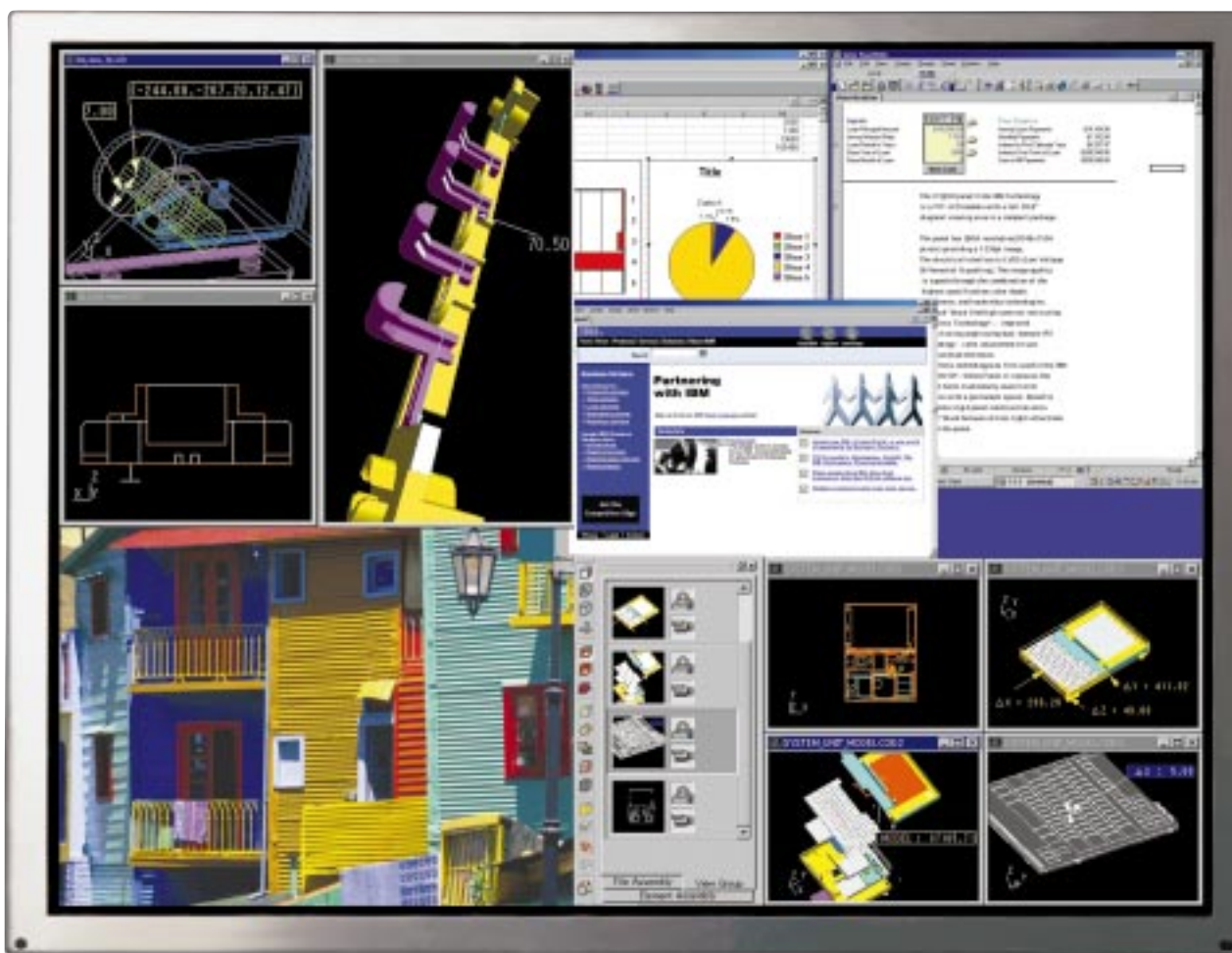




# ITQX20

52.8cm (20.8 inch) QXGA(2048x1536)  
3 Million pixels Color TFT LCD Module



## Highlight:

### Features

- QXGA2048x1536 pixels (3.15M pixels)
- 235cd/m<sup>2</sup> typ. Brightness
- High Contrast as 300:1
- Native 16M colors (RGB 8-bit each)
- High color reproducibility
- Using the Post Spacer
- Wide Viewing Angle as 170 degrees(H/V typ.)  
by using IPS & Dual Domain technology

### Applications

- Document creation and processing (2 page displays)
- Image processing
- Geo-physical visualization
- Medical imagery
- Industrial and automation systems
- The power word processor, spread-sheet and database user

The ITQX20 panel from IBM Technology is a TFT-LCD module with a full 20.8" diagonal viewing area in a compact package. The panel has QXGA resolution(2048x1536 pixels) providing a 123dpi image. The electrical interface is LVDS (Low Voltage Differential Signaling). The image quality is superb through the combination of the highest specification: color depth, brightness, and leadership technologies.

- "black" black find high contrast ratio using Post Spacer\*.
- improved wide-viewing angle using dual-domain IPS technology
- color adjustment to suit application preferences.

\*Post Spacer was first used in the IBM ITSX94(18" -SXGA) Panel. It replaces the spacer balls traditionally used in LCD modules with a permanent spacer. Benefits are a more rigid panel construction and a "black" black because of less light reflections within the panel.

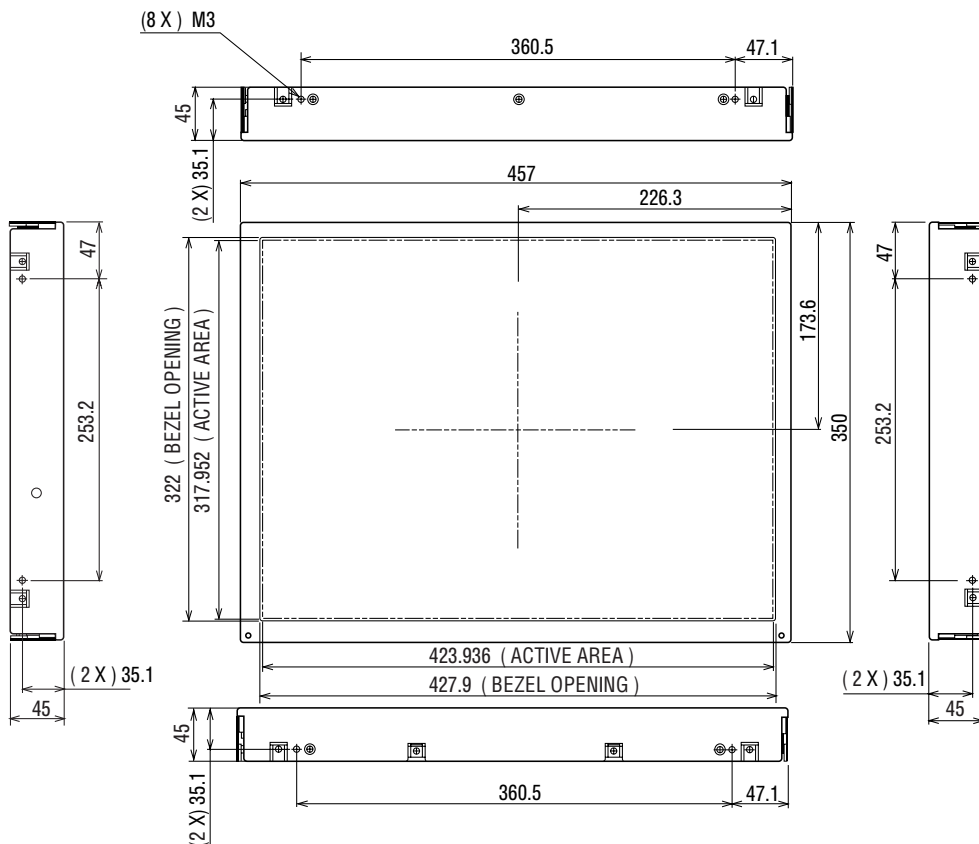
**For more information about this product, please contact:**  
**IBM Japan, Ltd.**  
**LCD Marketing**  
**Technology Market Development**  
**1623-14, Shimotsuruma, Yamato-shi,**  
**Kanagawa-ken 242-8502, Japan**  
**Te l:81-46-273-6551**  
**Fax:81-46-273-6975**

## Specification

Screen Diagonal(cm)	52.8 (20.8 inch)
Active Area(mm)	422.7 (H) x 317.0 (V)
Pixels	2048 (H) x 1536 (V)
Pixel Pitch(mm)	0.207 (H) x 0.207 (V)
Pixel Arrangement	R.G.B. Vertical Stripe
Display Mode	Dual-domain IPS, Normally Black
Contrast Ratio	300:1 (typ.) (In a Dark room)
Optical Rise Time/Fall Time(msec)	50 (typ.)
Input Voltage(V)	+12 +/-5%
White Luminance(cd/m <sup>2</sup> )	235 (typ.) **
Power Consumption(W)	70 (T.B.D.)
Weight(grams)	3,000 (typ.)
Physical Size(mm)	457.0(W) x 350.0(H) x 45.0(D) (typ.) (w/ inverter)
Electrical Interface	LVDS (5 Pairs) x 4 (Right x2, Left x2)
Support Color	16M (RGB 8-bit each data)
Temperature Range(degreeC)	
Operating	0 to +50 (T.B.D.)
Storage(Shipping)	-20 to +60 (T.B.D.)
Color Point(x, y)	0.294, 0.309 (Adjustable Color Temp, see the section)
Viewing Angle (degrees)	170 typ. (Horizontal/Vertical, 10:1 CR)
Module B/L Life (hours)	30,000 (Back Light Unit replacable) ***

Note: \*\* In case when color adjustment function is not used.

\*\*\* Can be replaced at IBM repair center.



IBM is the trademark of International Business Machines Corporation in the United States and / or other countries.



**IBM Japan, Ltd.**

2-12, Roppongi 3-chome, Minato-ku, Tokyo 106-8711, Japan

02-00 Printed in Japan

© Copyright IBM Corporation 2000

- Picture in this catalog may differ from actual products.
- Specifications of products are subject to change without notice.
- Display and printout data are not actual data.