

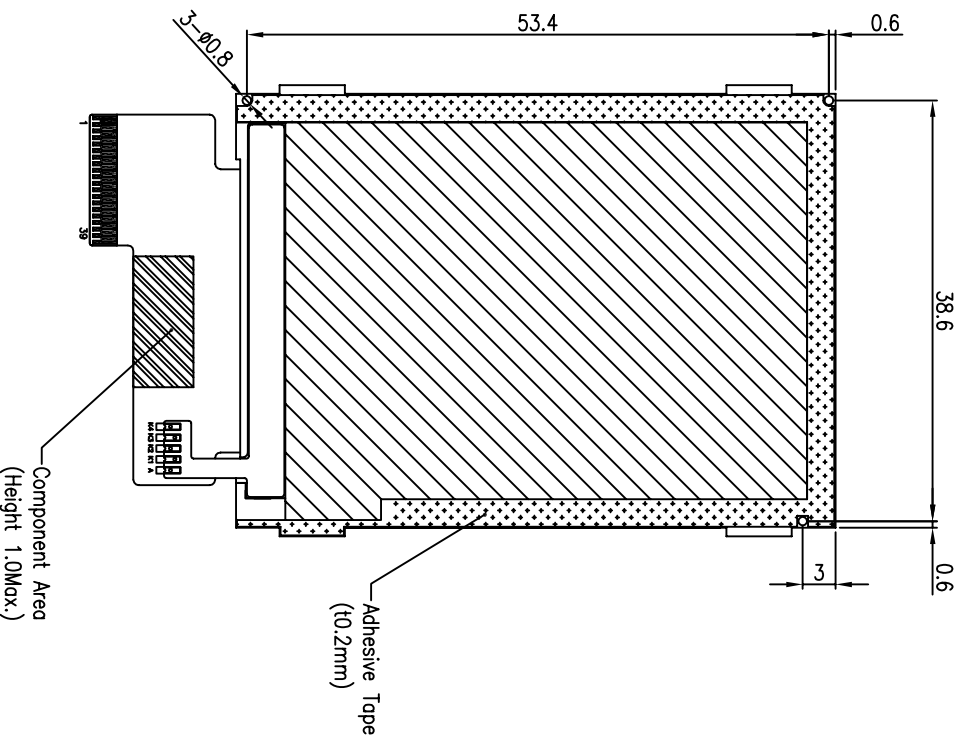
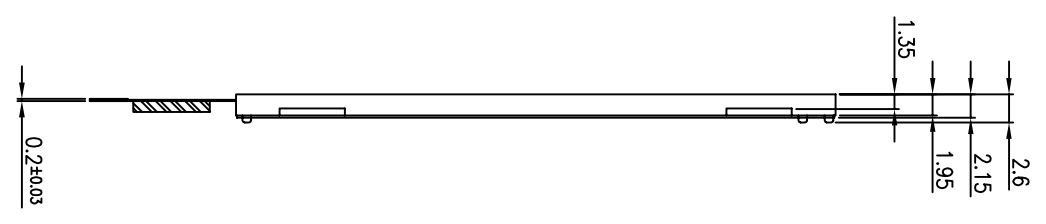
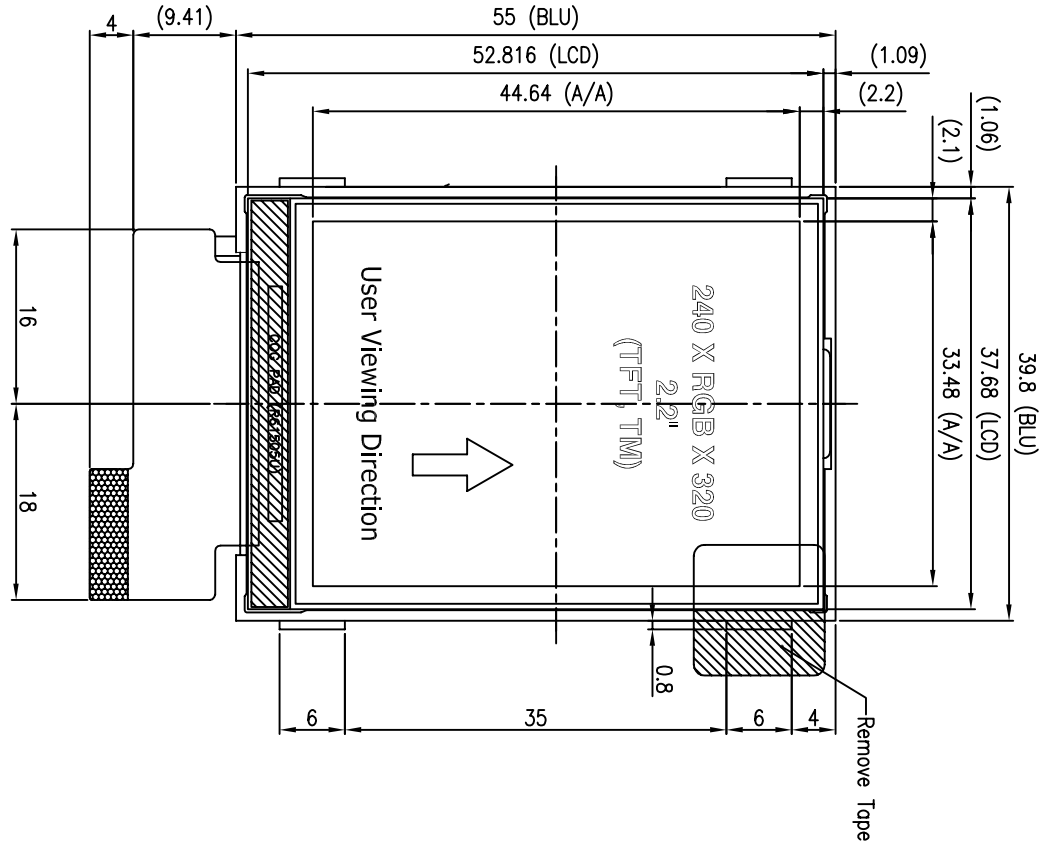
Releasing this DRAWING without PERMISSION of LG Innotek should be ACCUSED according to the laws and company rules.

All parts must not contain prohibited substances including RoHS Hazardous substances (Pb, Cd, Hg, Cr+6, PBB, PBDE) and for more details refer to LGIT's Eco-SCM standard, LGIT(30)-K-029.

PIN DESCRIPTION

NO.	DESCRIPTION
1	GND
2	IMO
3	IM3
4	RESET
5	VSYNC
6	DB17
7	DB16
8	DB15
9	DB14
10	DB13
11	DB12
12	DB11
13	DB10
14	DB9
15	DB8
16	DB7
17	DB6
18	DB5
19	DB4
20	DB3
21	DB2
22	DB1
23	DB0
24	RD
25	WR
26	RS
27	CS
28	FMARK
29	GND
30	IOVCC
31	IOVCC
32	VCC
33	VCC
34	GND
35	LED_K4
36	LED_K3
37	LED_K2
38	LED_K1
39	LED_A

- NOTES**
1. MAIN LCD SPEC.
 - 1) TYPE : 2.2" TFT, TM
 - 2) DRIVER IC : R61505U
 2. BACK LIGHT UNIT : 1-WAY, 4- LEDS
 3. CONNECTOR : HEROSE FH26-39S-0.3SH

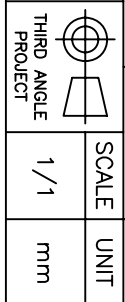


DIMENSIONAL TOLERANCE

DIMENSIONAL TOLERANCE	LENGTH
±0.2	

ISSUE NO	DATE (YY.MM.DD)	SIGNATURE	CHANGE CONTENTS
△			
△			
△			
△			
△			

NO	PART NO	QUANTITY	DESCRIPTION	MATERIAL	NOTE
RELATED P/N					



SCALE 1/1
UNIT mm

DRAWN 2008.05.06
H. G. PARK
CHECKED 2008.05.06
S. H. BAE
APPROVED 2008.05.06
J. H. NA

LG Innotek Co., Ltd.

MODEL IM220DBN6B

TITLE LCD MODULE ASS'Y