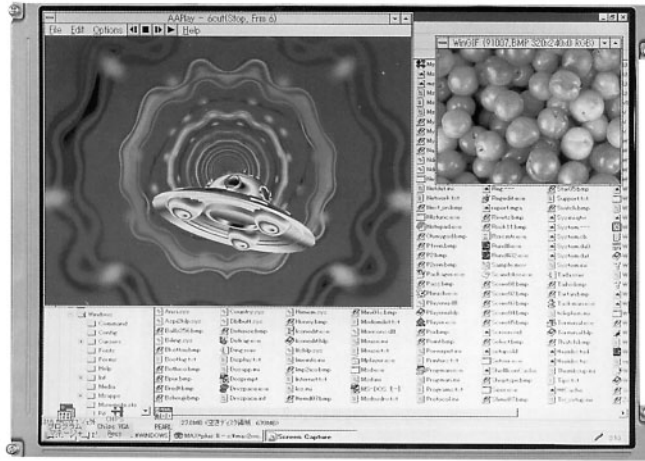


LP104V2

10.4" Active Matrix LCD Display

FEATURES

- The 10.4" LP104V2 offers VGA resolution, wide viewing angles and a large 264mm screen. 640 x 480 dots
- 150:1 Contrast Ratio
- Special CCFL (Cold Cathode Fluorescent Lamp) backlighting offers typical screen brightness of 200 cd/m²
- 3.3V CMOS logic
- Hibrite 400 and 600cd/m² versions available
- Wide viewing angle version available +/-70° horizontal, +45°/-50° vertical



Display Mode	Transmissive type normally white mode
Display Format	640 (x3) x 480 Dots
Screen Area	216.2 x 163.4 mm (10.4 inch diagonal)
Display Outline	246.5 x 179.4 x 8.0 mm (typ.)
Contrast Ratio	150:1 (typ.)
Brightness	200 cd/m ² (typ) / If = 5 mA
Viewing angle	+/-45° horizontal, +10°/-30° vertical
Response Time	Tr = 30ms (typ) / Tf = 50 ms (typ)
Color Pixel Arrangement	RGB vertical stripes
Display Surface	Low reflection type, antiglare with hard coating
Number of Colours	262.144 colours (6 bits for each RGB subpixel)
Contrast Setting	Maximum setting
Viewing Direction	6:00 o' clock (Maximum contrast direction)
Interface	3.3V CMOS logic
Backlight	CCFL top edgelight system

