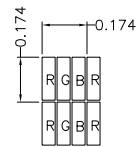
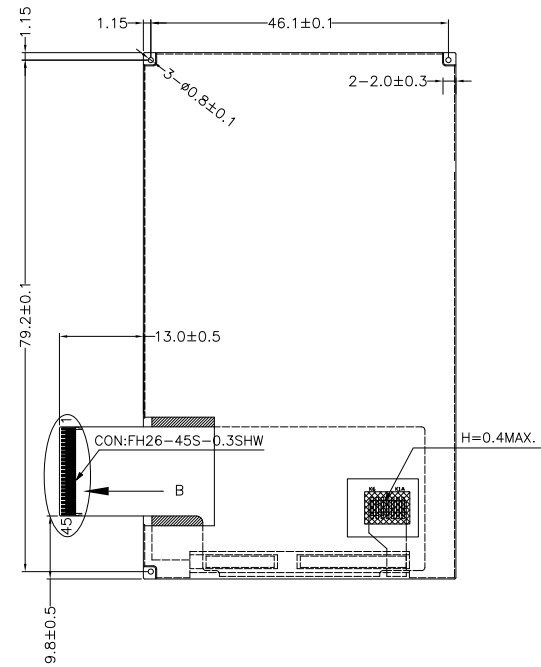
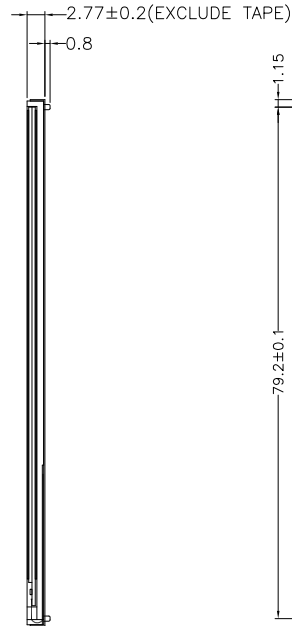
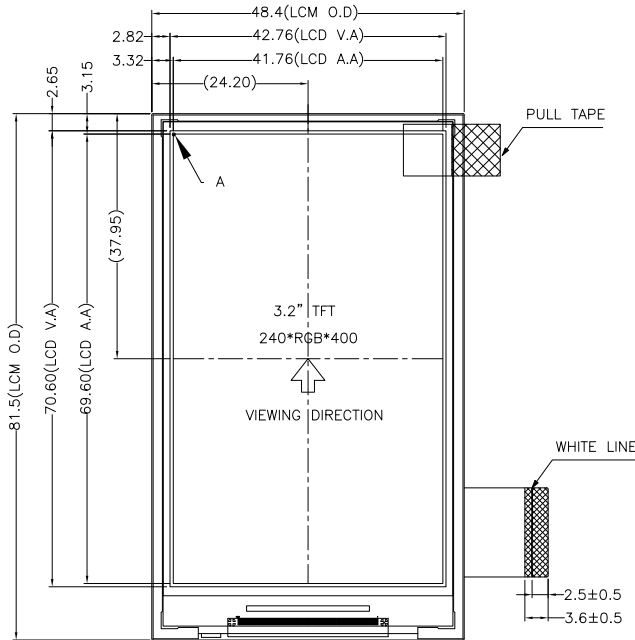
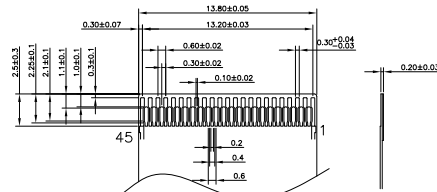


# MODEL NO.: BI032WQV



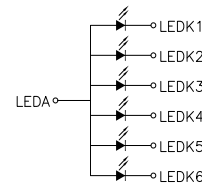
DETAIL A  
(SCALE 40:1)



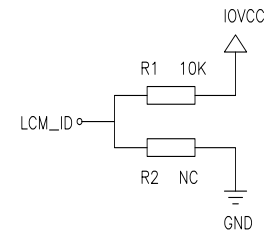
DETAIL B  
(SCALE 2:1)

## NOTES:

1. DISPLAY TYPE: TFT, TRANSMISSIVE, NORMALLY WHITE.
2. OPERATING VOLTAGE: IOVCC=1.8V; VCC=2.8V.
3. VIEWING DIRECTION: 6 O'CLOCK.
4. IC DRIVER: ST7793.
5. OPERATING TEMP: -20°C ~ 70°C.
6. STORAGE TEMP: -30°C ~ 80°C.
7. SURFACE LUMINANCE: 400CD/M<sup>2</sup>(TYP.).
8. BACKLIGHT: 6-CHIP WHITE LED, If=120mA, Vf=3.2V±0.3V.
9. TOP POLARIZER SURFACE TREATMENT: GLARE.
10. GENERAL TOLERANCE: ±0.2mm.
11. ROHS COMPLIANT.



BACKLIGHT CIRCUIT DIAGRAM



PIN NO	SYMBOL
1	FLM
2	GND
3	ENABLE
4	DOTCLK
5	VSYNC
6	GND
7	HSYNC
8	BS0
9	BS1
10	BS2
11	IOVCC
12	VCC
13	SDI
14	SDO
15	D17
16	D16
17	D15
18	D14
19	D13
20	D12
21	D11
22	D10
23	D9
24	D8
25	D7
26	D6
27	D5
28	D4
29	D3
30	D2
31	D1
32	D0
33	RESET
34	RD
35	WR
36	RS/SCL
37	CS
38	LEDK6
39	LEDK5
40	LEDK4
41	LEDK3
42	LEDK2
43	LEDK1
44	LEDA
45	LCM_ID