

LCD MODULE SPECIFICATION

Model : BI0350BT

This module uses ROHS material

For Customer's Acceptance:

Customer	Beyondinfinite.com Ltd
Approved	
Comment	

Revision	1.0
Engineering	
Date	2014-05-20
Our Reference	

[illegible]

CONTENTS

- GENERAL INFORMATION
- EXTERNAL DIMENSIONS
- ABSOLUTE MAXIMUM RATINGS
- ELECTRICAL CHARACTERISTICS
- BACKLIGHT CHARACTERISTICS
- ELECTRO-OPTICAL CHARACTERISTICS
- INTERFACE DESCRIPTION
- BLOCK DIAGRAM
- APPLICATION NOTES
- RELIABILITY TEST
- INSPECTION CRITERION
- PRECAUTIONS FOR USING LCD MODULES
- PRIOR CONSULT MATTER

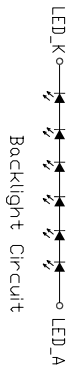
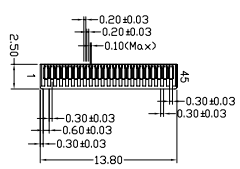
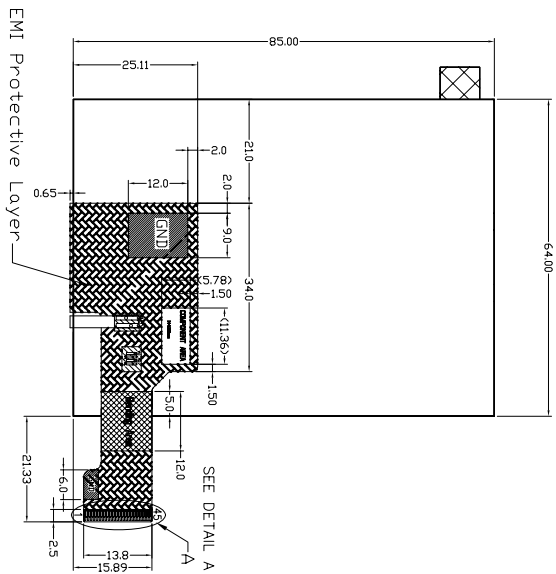
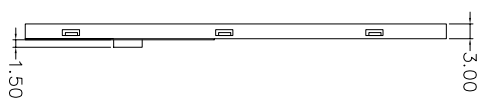
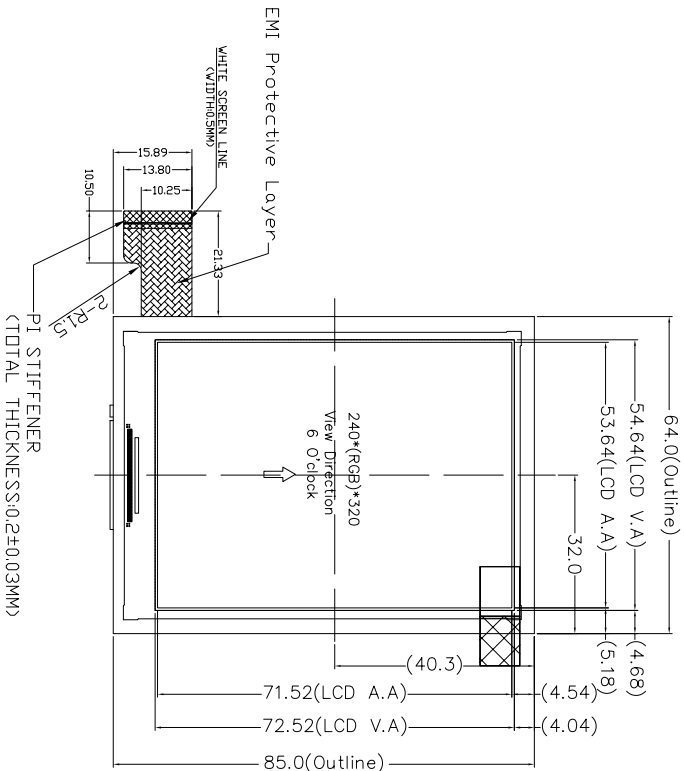
■ GENERAL INFORMATION

Item	Contents	Unit
LCD type	TFT/Transflective/Positive	/
Size	3.5	Inch
Viewing direction	6:00(without image inversion and least brightness change)	O' Clock
Gray scale inversion direction	12:00(contrast peak located at)	O' Clock
LCM (W × H × D)	64.00×85.00×3.00	mm ³
Active area (W×H)	53.64×71.52	mm ²
Pixel pitch (W×H)	0.2235×0.2235	mm ²
Number of dots	240 (RGB) × 320	/
Driver IC	ILI9341	/
Backlight type	6 LEDs	/
Interface type	18 bit RGB+SPI	/
Color depth	262K	/
Pixel configuration	R.G.B vertical stripe	/
Input voltage	3.0	V
With/Without TSP	Without TSP	/
Weight	TBD	g

Note 1: RoHS compliant;

Note 2: LCM weight tolerance: ± 5% .

EXTERNAL DIMENSIONS



*set IMI3-0J=1101
in the FPC

Pin No.	Symbol
1	GND
2	GND
3	VCC
4	VCC
5	VCC
6	VCC
7	GND
8	/RESET
9	HSYNC
10	VSYNC
11	PCLK
12	GND
13	B0
14	B1
15	B2
16	B3
17	B4
18	B5
19	G0
20	G1
21	G2
22	G3
23	G4
24	G5
25	R0
26	R1
27	R2
28	R3
29	R4
30	R5
31	GND
32	SCL
33	S01
34	S00
35	/CS
36	NC
37	DE
38	GND
39	NC
40	NC
41	NC
42	NC
43	GND
44	LED_A
45	LED_K

NOTES:

1. DISPLAY TYPE: TFT
2. VIEWING DIRECTION: 6:00
3. POLARIZER MODE: TRANSPARENT/POSITIVE
4. VCC=3.0V(TYP)
5. OPERATING TEMP: -20° C --- +70° C
6. STORAGE TEMP: -30° C --- +80° C
7. LCD DRIVE IC: IL19341
8. INTERFACE: 18-BIT RGB+SPI
9. BACKLIGHT: 6CHIP-WHITE LED/20mA/19.2V(TYP)
10. UNMARKED TOLERANCE: ±0.30
11. REQUIREMENTS ON ENVIRONMENTAL PROTECTION: RoHS
12. CONNECTOR: FH26W-45S-0.35HW(05)

TIMES	MODIFICATION	CONTENT
1		

■ABSOLUTE MAXIMUM RATINGS

Parameter	Symbol	Min	Max	Unit
Supply voltage	VCC	-0.3	4.6	V
Driver supply voltage	VGH-VGL	-0.3	32	V
Operating temperature	T _{OP}	-20	70	°C
Storage temperature	T _{ST}	-30	80	°C
Humidity	RH	-	90%(Max60°C)	RH

■ELECTRICAL CHARACTERISTICS

Parameter	Symbol	Min	Typ	Max	Unit
Supply voltage	VCC	2.8	3.0	3.3	V

■ BACKLIGHT CHARACTERISTICS

Item	Symbol	Min.	Typ.	Max.	Unit	Condition
Forward voltage	V _f	18	19.2	21	V	6 LEDs serial
Forward current	I _f	-	20	-	mA	
Power consumption	W _{BL}	-	384	-	mW	
Operating life time	-	-	25000	-	Hrs	

■ELECTRO-OPTICAL CHARACTERISTICS

Item		Symbol	Condition	Min	Typ	Max	Unit	Remark	Note
Response time		Tr+Tf	$\theta=0^{\circ}$ $\varnothing=0^{\circ}$ Ta=25℃	-	35	-	ms	FIG 1.	4
Contrast ratio		Cr		100	150	-	---	FIG 2.	1
Luminance uniformity		δ WHITE		80	85	-	%	FIG 2.	3
Surface Luminance		Lv		-	130	-	cd/m ²	FIG 2.	2
Viewing angle range		θ	$\varnothing = 90^{\circ}$	-	40	-	deg	FIG 3.	6
			$\varnothing = 270^{\circ}$	-	45	-	deg	FIG 3.	
			$\varnothing = 0^{\circ}$	-	55	-	deg	FIG 3.	
			$\varnothing = 180^{\circ}$	-	40	-	deg	FIG 3.	
CIE (x, y) chromaticity	Red	x	$\theta=0^{\circ}$ $\varnothing=0^{\circ}$ Ta=25℃	-	0.624	-		FIG 2.	5
		y		-	0.368	-			
	Green	x		-	0.350	-			
		y		-	0.550	-			
	Blue	x		-	0.143	-			
		y		-	0.119	-			
	White	x		-	0.280	-			
		y		-	0.320	-			
Reflectance	-	-	-	-	7.0	-	%	-	8

Note 1. Contrast Ratio(CR) is defined mathematically as For more information see FIG 2.

$$\text{Contrast Ratio} = \frac{\text{Average Surface Luminance with all white pixels (P1, P2, P3, P4, P5)}}{\text{Average Surface Luminance with all black pixels (P1, P2, P3, P4, P5)}}$$

Note 2. Surface luminance is the LCD surface from the surface with all pixels displaying white. For more information see FIG 2.

$$L_v = \text{Average Surface Luminance with all white pixels (P1, P2, P3, P4, P5)}$$

Note 3. The uniformity in surface luminance , δ WHITE is determined by measuring luminance at each test position 1 through 5, and then dividing the maximum luminance of 5 points luminance by minimum luminance of 5 points luminance. For more information see FIG 2.

$$\delta \text{ WHITE} = \frac{\text{Minimum Surface Luminance with all white pixels (P1, P2, P3, P4, P5)}}{\text{Maximum Surface Luminance with all white pixels (P1, P2, P3, P4, P5)}}$$

Note 4. Response time is the time required for the display to transition from White to black(Rise Time, Tr) and from black to white(Decay Time, Tf). For additional information see FIG 1. The test equipment is Autronic-Melchers's ConoScope. Series.

Note 5. CIE (x, y) chromaticity, The x, y value is determined by measuring luminance at each test position 1 through 5, and then make average value.

Note 6. Viewing angle is the angle at which the contrast ratio is greater than 2. For TFT module the contrast ratio is greater than 10. The angles are determined for the horizontal or x axis and the vertical or y axis with respect to the z axis which is normal to the LCD surface. For more information see FIG 3.

Note 7. For viewing angle and response time testing, the testing data is base on Autronic-Melchers's ConoScope. Series Instruments For contrast ratio, Surface Luminance, Luminance uniformity, CIE The test data is base on TOPCON's BM-5 photo detector.

FIG. 1 The definition of Response Time

The response time is defined as the following figure and shall be measured by switching the input signal for “black” and “white”.

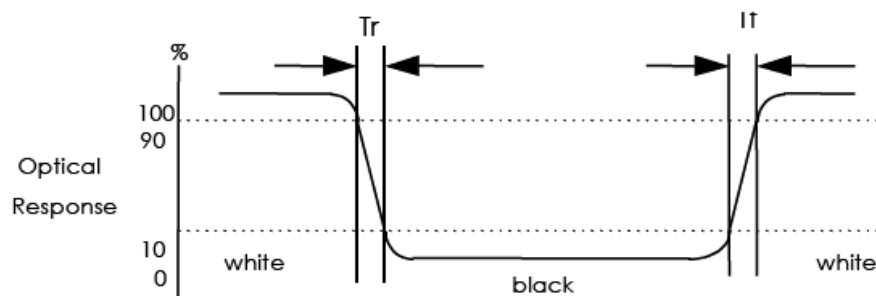


FIG. 2 Measuring method for Contrast ratio, surface luminance, Luminance uniformity , CIE (x, y) chromaticity

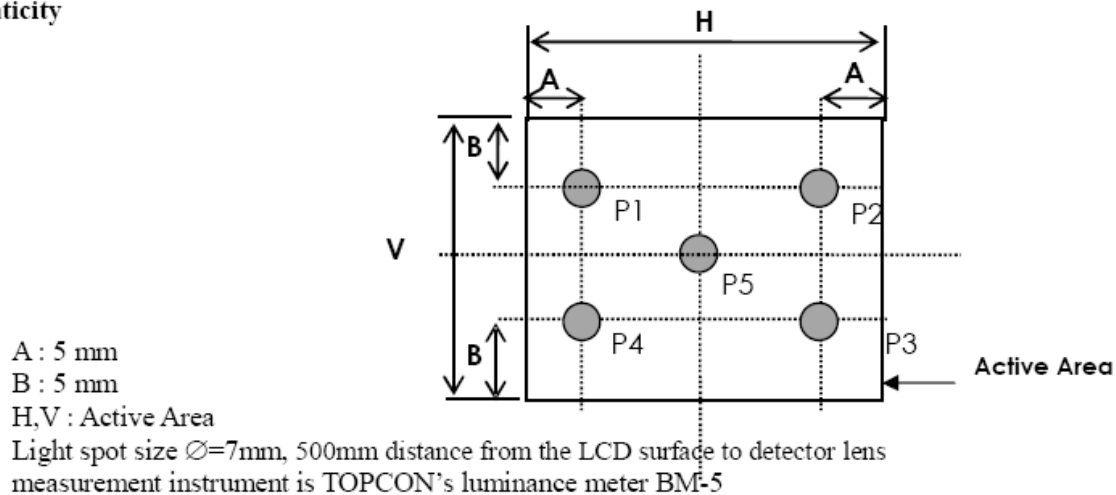
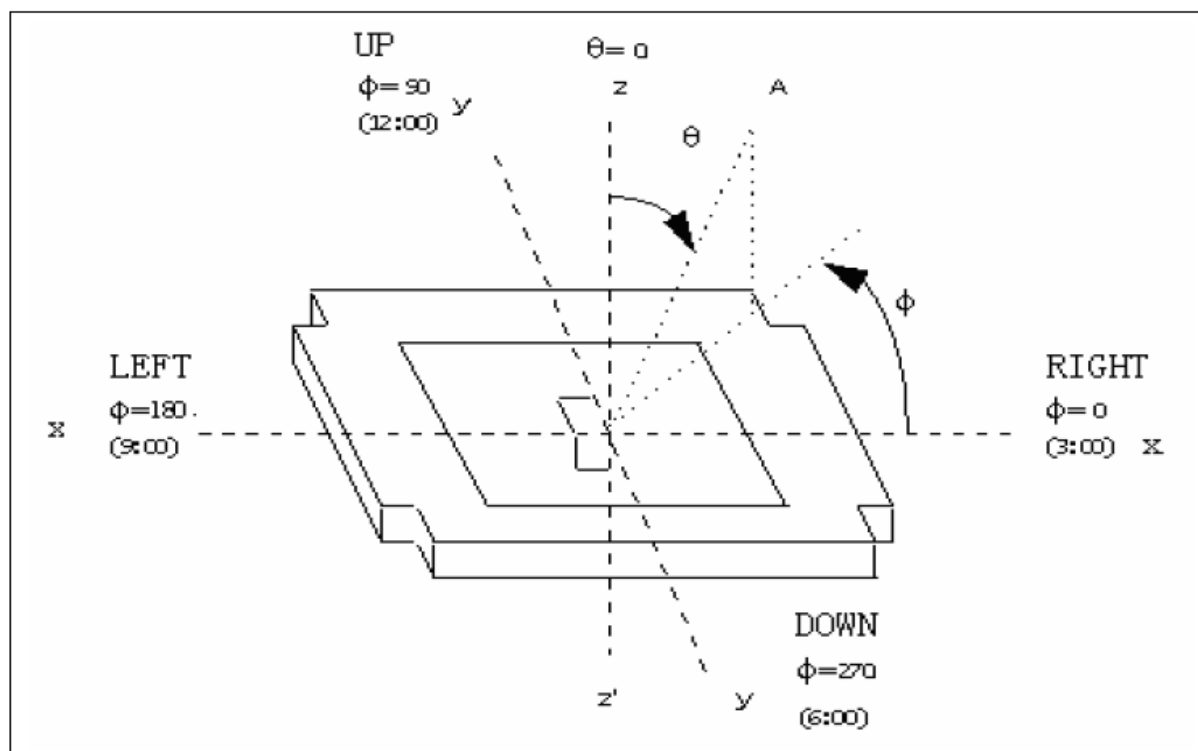


FIG. 3 The definition of viewing angle

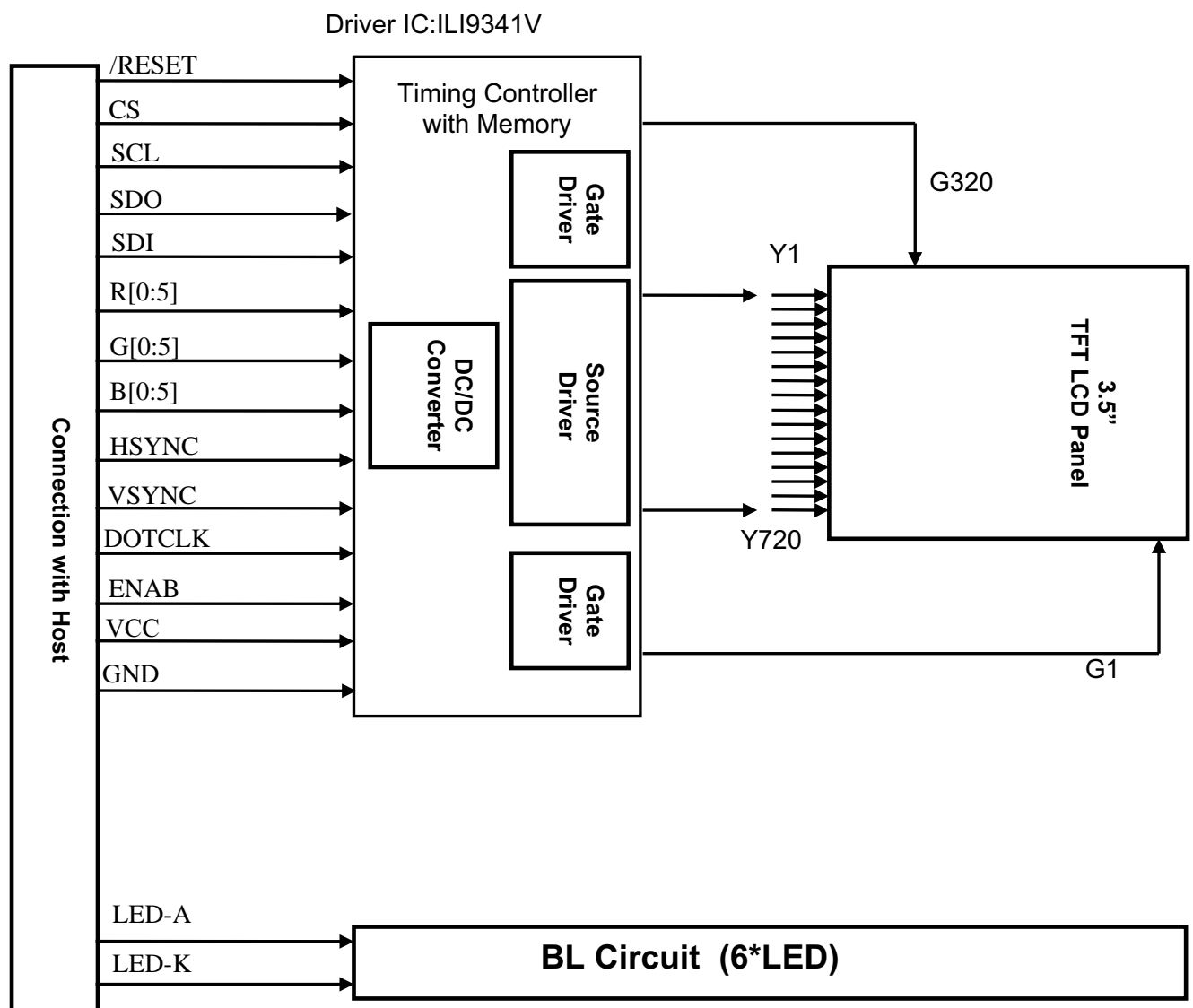


■ INTERFACE DESCRIPTION

Pin No.	Symbol	Description
1	GND	Ground
2	GND	GROUND
3	VCC	POWER SUPPLY
4	VCC	POWER SUPPLY
5	VCC	POWER SUPPLY
6	VCC	POWER SUPPLY
7	GND	GROUND
8	/RESET	Reset (Low active)
9	HSYNC	Horizontal sync in RGB mode
10	VSYNC	Vertical SYNC input
11	PCLK	Pixel clock signal in RGB mode
12	GND	NO CONNECT
13	B0	Blue data input (LSB)
14	B1	Blue data input
15	B2	Blue data input
16	B3	Blue data input
17	B4	Blue data input
18	B5	Blue data input (MSB)
19	G0	Green data input (LSB)
20	G1	Green data input
21	G2	Green data input
22	G3	Green data input
23	G4	Green data input
24	G5	Green data input (MSB)
25	R0	Red data input (LSB)
26	R1	Red data input
27	R2	Red data input
28	R3	Red data input
29	R4	Red data input
30	R5	Red data input (MSB)
31	GND	GROUND
32	SCL	SERIAL CLOCK
33	SDI	SERIAL DATA INPUT
34	SDO	SERIAL DATA OUTPUT
35	/CS	CHIP SELECT
36	NC	NO CONNECT
37	DE	DATA ENABLE

38	GND	GROUD
39	NC	NO CONNECT
40	NC	NO CONNECT
41	NC	NO CONNECT
42	NC	NO CONNECT
43	GND	GROUD
44	LED_A	LED+
45	LED_K	LED-

■ BLOCK DIAGRAM



■ APPLICATION NOTES

1.Datainputtiming

1.1SignalACTiming

(VCC=2.8~3.3V,Ta=25℃)

Parameter	Description	Min	Max	Unit
tSYNCS	VSYNC/HSYNC setup time	15		ns
tSYNCH	VSYNC/HSYNC	15		ns
tENS	ENAB	15		ns
tENH	ENAB	15		ns
tPOS	Data	15		ns
tPDH	Data	15		ns
PWDH	DCLK high-level period	15		ns
PWDL	DCLK low-level period	15		ns
tCYCD	DCLK cycle time	100		ns
trgbr , trgbf	DCLK,HSYNC,VSYNC rise/fall		15	ns

Table1.1RGBInterfaceCharacteristics

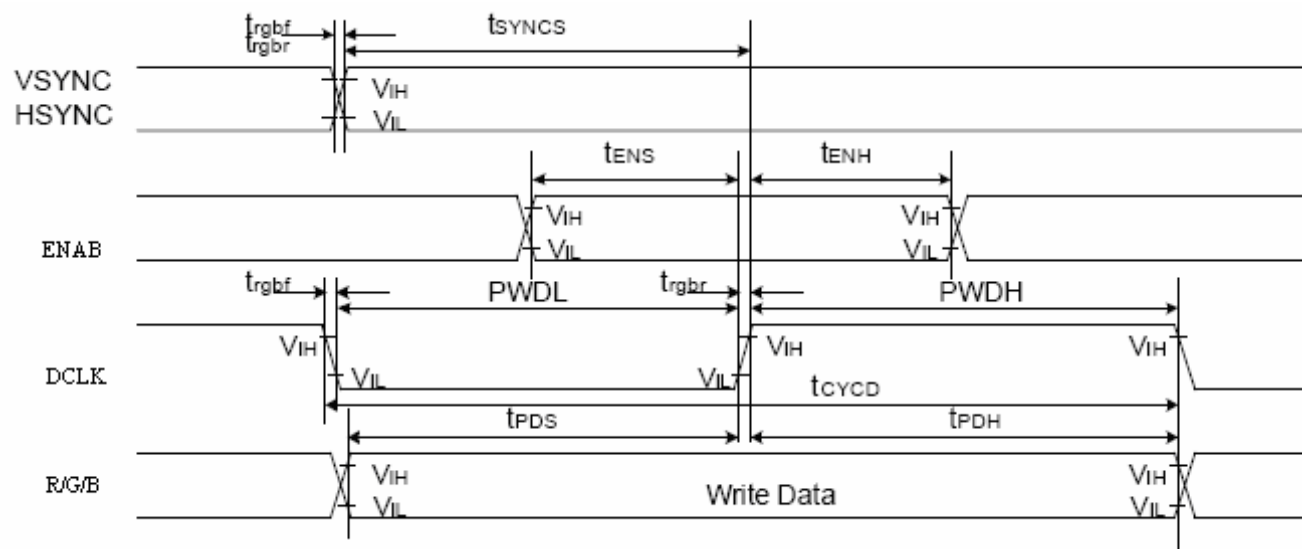


Fig.1-1RGBInterfaceTiming

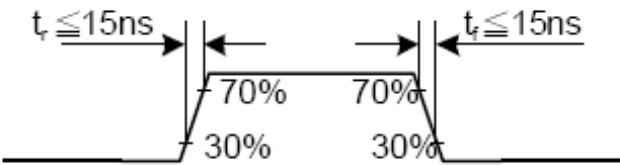


Fig.1-2Inputsignal'sriseandfalltimes

1.2RecommendRGBInterfaceTiming

(VCC=2.8~3.3V,Ta=25℃)

Parameter	Symbol	Symbol	Min	Typ	Max	Unit
DCLK	DCLK frequency	fDCYC		5.64	10	MHz
	DCLK period	tDCYC	100	177.15		ns
HSYNC	Horizontal	Thd	240			DCLK
	1horizontalline	Th		310		
	Horizontal blank	Thb	56	60		
	Horizontal front porch	Thfp	2	10	16	
VSYNC	Vertical display area	Tvd	320			Line
	Vsync period time	Tv		328		
	Vsync blank	Tvb	2	4		
	Vsync Front porch	Tvfp	2	4		

Tab.1-2RecommendInputTiming(DCLK,HSYNC,VSYNC,ENAB)

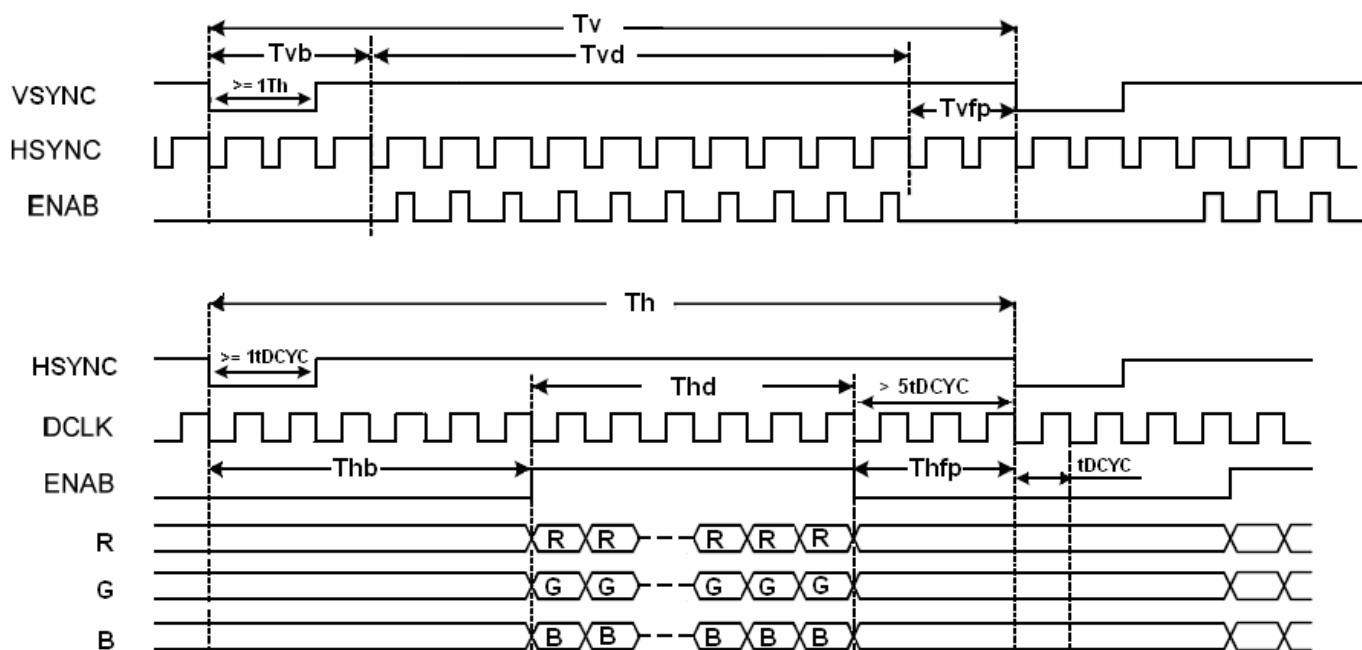


Fig.1-3RecommendRGBInterfaceTiming

1.23-Wire9-BITSerialInterface

1.2.13-Wire9-Bitdataserialinterfacewritemode

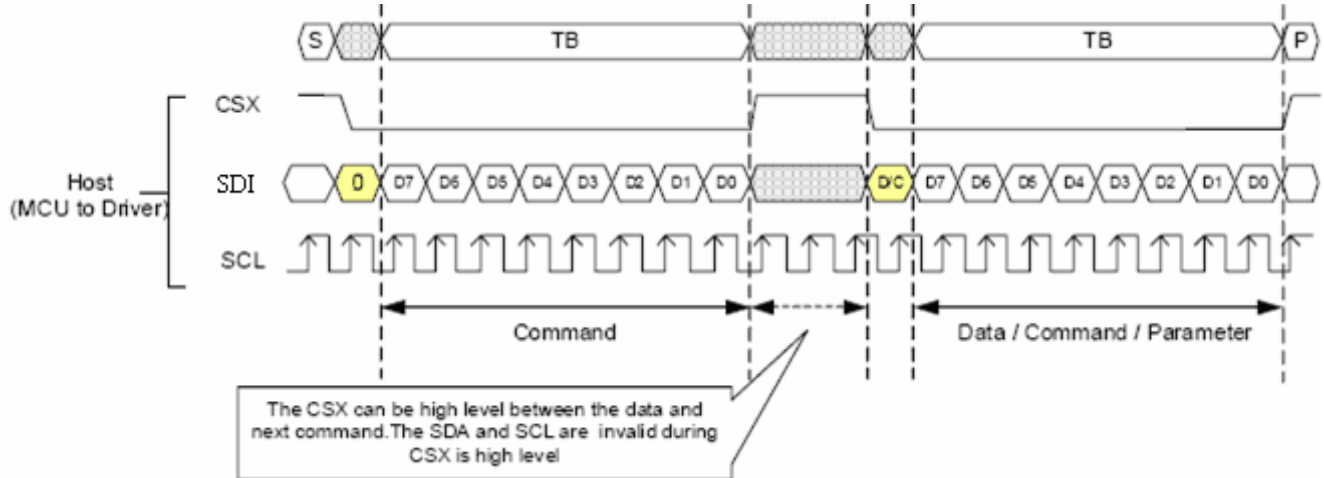


Figure.1-43-Wire9-BitSerialInterfaceBusProtocol,WriterRegisterorDisplayRAM

Note: D/C=0, Transfer Command; D/C=1, Transfer Data.

6.2.2 3-Wire 9-Bit data serial interface read 1-byte mode

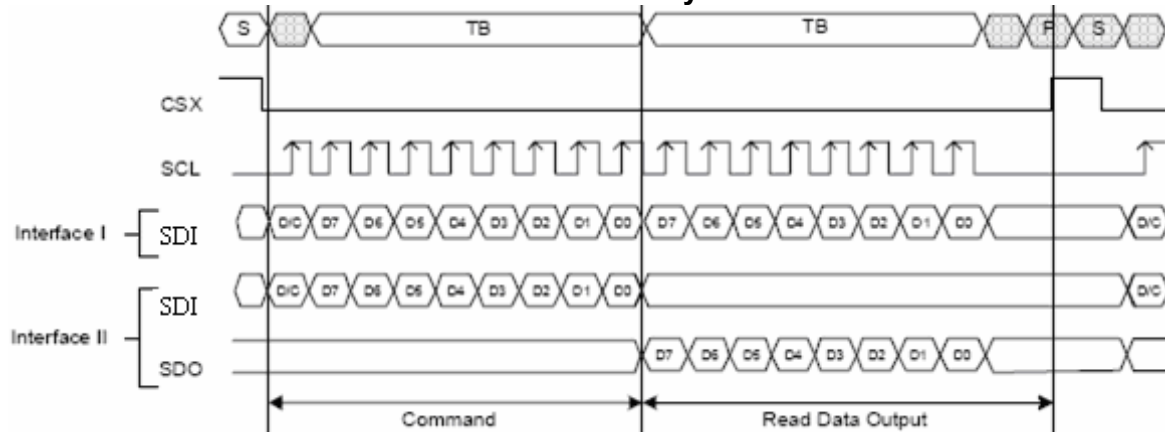


Figure.1-53-Wire9-BitSerialInterface/IIBusProtocol,Read1-ByteFromRegister

Note: D/C=0, Transfer Command; D/C=1, Transfer Data

1.2.33-Wire9-Bitdataserialinterfaceread3-bytemode

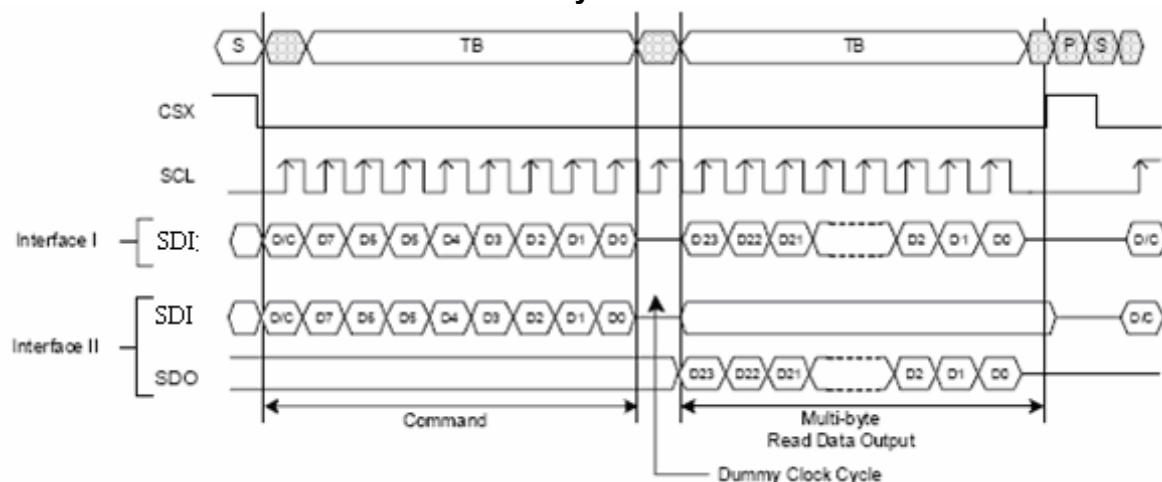


Figure.1-63-Wire9-BitSerialInterface/IIBusProtocol,Read3-ByteFromRegister

Note: D/C=0, Transfer Command; D/C=1, Transfer Data.

1.2.43-Wire9-BitserialinterfaceTiming

(VCC=2.8~3.3V,Ta=25℃)

Parameter	Symbol	Conditions	Min	Max	Unit	Remark
Serial Clock Cycle(Write)	tscycw	SCL	100		ns	
SCL “H” pluse width(Write)	tshw	SCL	40		ns	
SCL “L” pluse width(Write)	tslw	SCL	40		ns	
Data setup time(Write)	tsds	SDI	30		ns	
Data hold time(Write)	tsdh	SDI	30		ns	
Serial Clock Cycle(Read)	tscycr	SCL	150		ns	
SCL “H” pluse width(Read)	tshr	SCL	60		ns	
SCL “L” pluse width(Read)	tslr	SCL	60		ns	
Access time	tacc	SDO(Read)	10		ns	
Output disable time	toh	SDO(Read)	10	50	ns	
CS “H” pluse width	tchwh	CS	40		ns	
CS-SCL time	tcss	CS(write)	60		ns	
	tcswh	CS(write)	65		ns	

Tab.1-3ACCharacteristics of 3-Wire9-BitSerialInterface

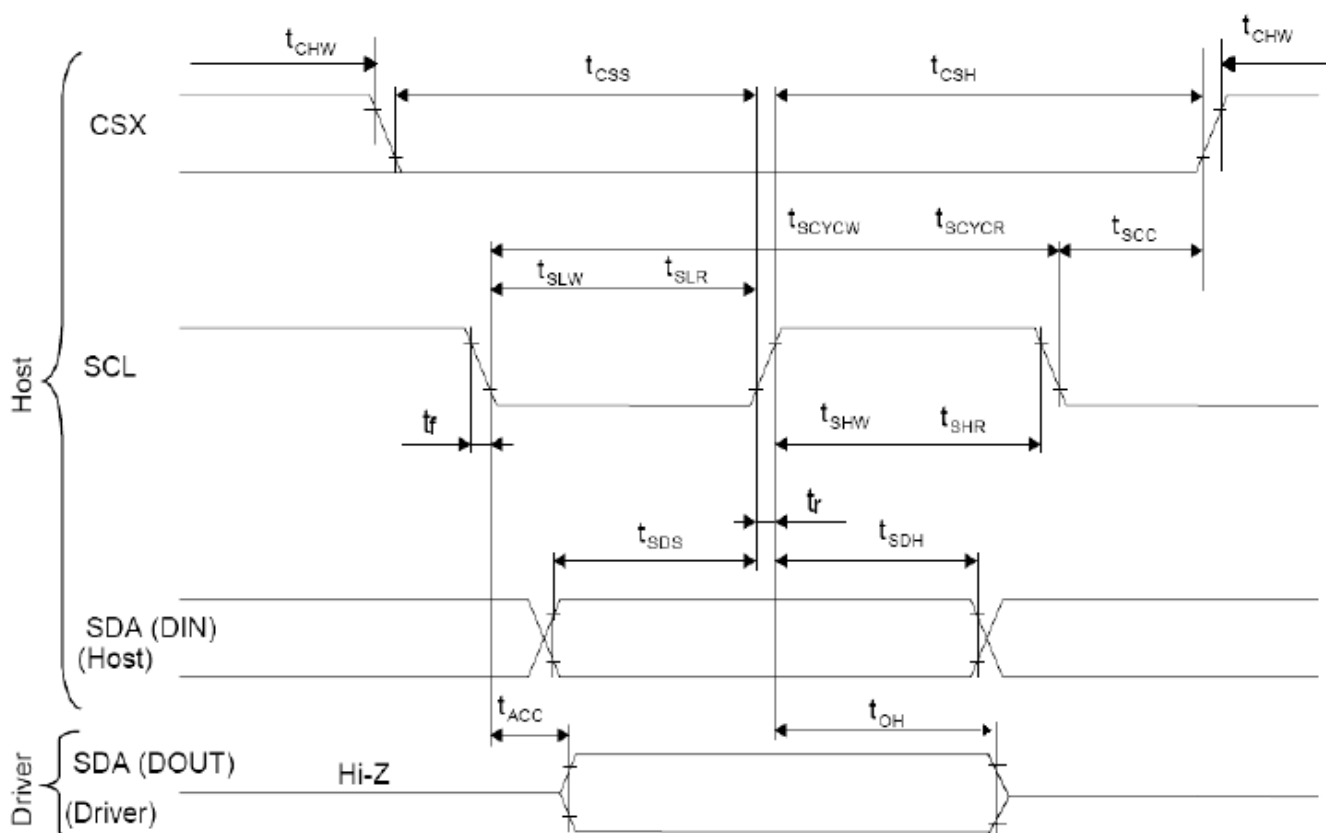


Fig.1-7ACCharacteristic of 3-Wire9-BitSerialInterfacetiming

1.3ResetTiming

Parameter	Symbol	MIN	TYP	MAX	Unit	Remark
RESET	tRW	10			us	
	tRT			5	ms	note 1
				120	ms	note 2

Tab.1-4Resetinputtiming

Note1: When Reset applied during Sleep In Mode.

Note2: When Reset applied during Sleep Out Mode.

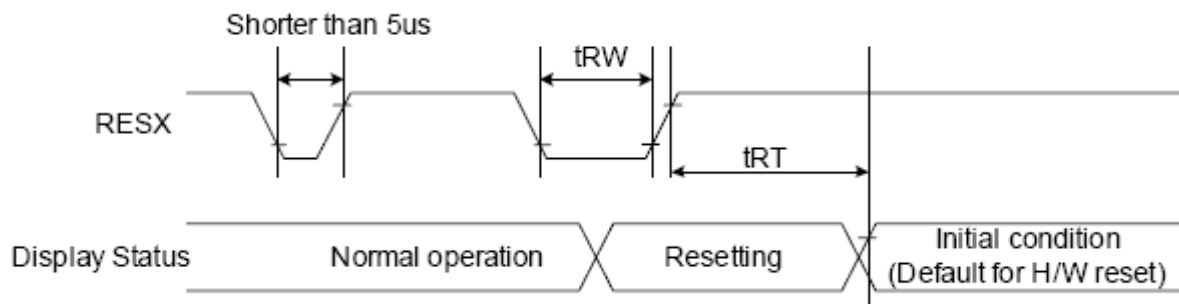


Fig.1-8Resettiming

■ RELIABILITY TEST

No.	Test Item	Test Condition	Inspection after test
1	High Temperature Storage	$80 \pm 2^{\circ}\text{C}/240\text{hours}$	1. Functional test is OK. Missing Segment, short, unclear segment, non-display, display abnormally and liquid crystal leak are un-allowed. 2. No low temperature bubbles, end seal loose and fall, frame rainbow.
2	Low Temperature Storage	$-30 \pm 2^{\circ}\text{C}/240\text{hours}$	
3	High Temperature Operating	$70 \pm 2^{\circ}\text{C}/240\text{hours}$	
4	Low Temperature Operating	$-20 \pm 2^{\circ}\text{C}/240\text{hours}$	
5	Temperature Cycle	$-20 \pm 2^{\circ}\text{C} \sim 25 \sim 70 \pm 2^{\circ}\text{C} \times 20\text{cycles}$ (30min.) (5min.) (30min.)	
6	Damp Proof Test	$40^{\circ}\text{C} \pm 5^{\circ}\text{C} \times 90\%\text{RH}/240\text{hours}$	1. Function test is OK. 2. No glass crack, chipped glass, end seal loose and fall, epoxy frame crack 3. No structure loose and fall.
7	Vibration Test	Frequency: 10Hz~55Hz Amplitude: 1.0mm, Each direction on X,Y axe 0.5 hours, circle 2 hours	
8	Dropping test	Drop to the ground from 80cm height, one time, every side of carton.	

■ INSPECTION CRITERION

OUTGOING QUALITY STANDARD	PAGE 1 OF 5
TITLE:FUNCTIONAL TEST & INSPECTION CRITERIA	
<p>This specification is made to be used as the standard acceptance/rejection criteria for Color mobile phone LCM.</p> <p>1 Sample plan</p> <p>1.1 Lot size: Quantity per shipment lot per model</p> <p>1.2 Sampling type: Normal inspection,Single sampling</p> <p>1.3 Inspection level: II</p> <p>1.4 Sampling table: MIL-STD-105D</p> <p>1.5 Acceptable quality level (AQL)</p> <p> Major defect: AQL=0.65</p> <p> Minor defect: AQL=1.00</p> <p>2. Inspection condition</p> <p>2.1 Ambient conditions:</p> <p> a. Temperature: Room temperature $25\pm 5^{\circ}\text{C}$</p> <p> b. Humidity: $(60\pm 10)\% \text{RH}$</p> <p> c. Illumination: Single fluorescent lamp non-directive (300 to 700 Lux)</p> <p>2.2 Viewing distance:</p> <p> The distance between the LCD and the inspector' s eyes shall be at least $35\pm 5\text{cm}$.</p> <p>2.3 Viewing Angle</p> <p> U/D: $45^{\circ} / 45^{\circ}$, L/R: $45^{\circ} / 45^{\circ}$</p> <div data-bbox="432 1285 1080 1641"></div>	

TITLE:FUNCTIONAL TEST & INSPECTION CRITERIA

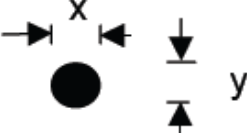
3. Inspection standards

Defects are classified as major defects and minor defects according to the degree of defectiveness defined herein.

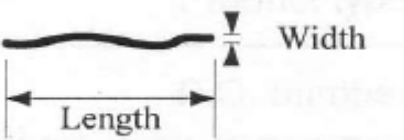

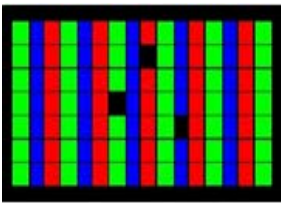
3.1 Major defect

Item No	Items to be inspected	Inspection Standard
3.1.1	All functional defects	1) No display 2) Display abnormally 3) Short circuit 4) line defect
3.1.2	Missing	Missing function component
3.1.3	Crack	Glass crack

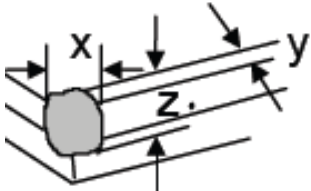
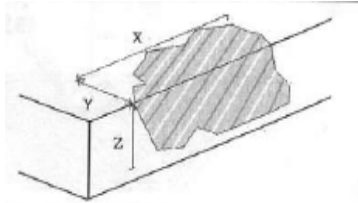
3.2 Minor defect

Item No	Items to be inspected	Inspection standard	
3.2.1	Spot Defect Including Black spot White spot Pinhole Foreign particle Polarizer dirt	For dark/white spot is defined $\varphi = (x + y) / 2$ 	
		Size $\varphi(\text{mm})$	Acceptable Quantity
		$\varphi \leq 0.10$	Ignore
		$0.10 < \varphi \leq 0.20$	3
		$0.20 < \varphi$	Not allowed

TITLE:FUNCTIONAL TEST & INSPECTION CRITERIA

3.2.2	Line Defect Including Black line White line Scratch	Define:	
			
		Width(mm) Length(mm)	Acceptable Quantity
		$W \leq 0.02$	Ignore
		$0.02 < W \leq 0.05$ $L \leq 3.0$	2
		$0.05 < W$	Not allowed
	Polarizer Dent/Bubble	Size φ (mm)	Acceptable Quantity
		$\varphi \leq 0.2$	Ignore
		$0.2 < \varphi \leq 0.3$	2
		$0.3 < \varphi \leq 0.5$	1
		$0.5 < \varphi$	Not allowed
		Total QTY	3
	Electrical Dot Defect	Bright and Black dot define:	
		 and 	
		Inspection pattern: Full white, Full black, Red, green and blue screens	
		Item	Acceptable Quantity
		Black dot defect	2
		Bright dot defect	0
		Total Dot	2

TITLE:FUNCTIONAL TEST & INSPECTION CRITERIA

3.2.5	Touch panel defect	 <p>1. Corner Fragment:</p>	
		Size(mm)	Acceptable Quantity
		$X \leq 3\text{mm}$ $Y \leq 3\text{mm}$ $Z \leq T$	Ignore T: Glass thickness X: Length Y: Width Z: thickness
		 <p>2. Side Fragment:</p>	
		Size(mm)	Acceptable Quantity
		$X \leq 5.0\text{mm}$ $Y \leq 3\text{mm}$ $Z \leq T$	Ignore T: Glass thickness X: Length Y: Width Z: thickness
3.2.6	Touch panel spot	Size ϕ (mm)	Acceptable Quantity
		$\phi \leq 0.15$	Ignore
		$0.15 < \phi \leq 0.25$	3
		$0.25 < \phi$	0

TITLE:FUNCTIONAL TEST & INSPECTION CRITERIA

3.2.7	Touch panel White line Scratch	Width(mm) Length(mm)	Acceptable Quantity
		$W \leq 0.03$	Ignore
		$0.03 < W \leq 0.05$ $L \leq 5.0$	3
		$0.05 < W \text{ or } L > 5$	Not allowed
3.2.8	Touch panel Newton ring	Compare with limit sample	

- Note:
1. Dot defect is defined as the defecti ve area of the dot area is larger than 50% of the dot area .
 2. The distance between two bright dot defects (red, green, blue, and white) should be larger than 15mm;
 3. The distance between black dot defects or black and bright dot defects should be more than 5mm apart.
 4. Polarizer bubble is defined as the bubble appears on active display area. The defect of polarizer bubble shall be ignored if the polarizer bubble appears on the outside of active display area.

■ PRECAUTIONS FOR USING LCD MODULES

Handling Precautions

(1) The display panel is made of glass and polarizer. As glass is fragile. It tends to become or chipped during handling especially on the edges. Please avoid dropping or jarring. Do not subject it to a mechanical shock by dropping it or impact.

(2) If the display panel is damaged and the liquid crystal substance leaks out, be sure not to get any in your mouth. If the substance contacts your skin or clothes, wash it off using soap and water.

(3) Do not apply excessive force to the display surface or the adjoining areas since this may cause the color tone to vary. Do not touch the display with bare hands. This will stain the display area and degraded insulation between terminals (some cosmetics are determined to the polarizer).

(4) The polarizer covering the display surface of the LCD module is soft and easily scratched. Handle this polarizer carefully. Do not touch, push or rub the exposed polarizers with anything harder than an HB pencil lead (glass, tweezers, etc.). Do not put or attach anything on the display area to avoid leaving marks on. Condensation on the surface and contact with terminals due to cold will damage, stain or dirty the polarizer. After products are tested at low temperature they must be warmed up in a container before coming is contacting with room temperature air.

(5) If the display surface becomes contaminated, breathe on the surface and gently wipe it with a soft dry cloth. If it is heavily contaminated, moisten cloth with one of the following solvents

- Isopropyl alcohol
- Ethyl alcohol

Do not scrub hard to avoid damaging the display surface.

(6) Solvents other than those above-mentioned may damage the polarizer. Especially, do not use the following.

- Water
- Ketone
- Aromatic solvents

Wipe off saliva or water drops immediately, contact with water over a long period of time may cause deformation or color fading. Avoid contacting oil and fats.

(7) Exercise care to minimize corrosion of the electrode. Corrosion of the electrodes is accelerated by water droplets, moisture condensation or a current flow in a high-humidity environment.

(8) Install the LCD Module by using the mounting holes. When mounting the LCD module make sure it is free of twisting, warping and distortion. In particular, do not forcibly pull or bend the I/O cable or the backlight cable.

(9) Do not attempt to disassemble or process the LCD module.

(10) NC terminal should be open. Do not connect anything.

(11) If the logic circuit power is off, do not apply the input signals.

(12) Electro-Static Discharge Control, Since this module uses a CMOS LSI, the same careful attention should be paid to electrostatic discharge as for an ordinary CMOS IC. To prevent destruction of the elements by static electricity, be careful to maintain an optimum work environment.

- Before remove LCM from its packing case or incorporating it into a set, be sure the module and your body have the same electric potential. Be sure to ground the body when handling the LCD modules.

- Tools required for assembling, such as soldering irons, must be properly grounded. make certain the AC power source for the soldering iron does not leak. When using an electric screwdriver to attach LCM, the screwdriver should be of ground potentiality to minimize as much as possible any transmission of electromagnetic waves produced sparks coming from the commutator of the motor.

- To reduce the amount of static electricity generated, do not conduct assembling and other work under dry conditions. To reduce the generation of static electricity be careful that the air in the work is not too dried. A relative humidity of 50%-60% is recommended. As far as possible make the electric potential of your work clothes and that of the work bench the ground potential

- The LCD module is coated with a film to protect the display surface. Exercise care when peeling off this protective film since static electricity may be generated

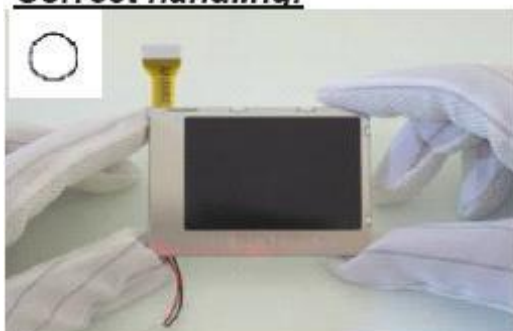
(13) Since LCM has been assembled and adjusted with a high degree of precision, avoid applying excessive shocks to the module or making any alterations or modifications to it.

- Do not alter, modify or change the shape of the tab on the metal frame.
- Do not make extra holes on the printed circuit board, modify its shape or change the positions of components to be attached.
- Do not damage or modify the pattern writing on the printed circuit board.
- Absolutely do not modify the zebra rubber strip (conductive rubber) or heat seal connector.
- Except for soldering the interface, do not make any alterations or modifications with a soldering iron.
- Do not drop, bend or twist LCM.

Handling precaution for LCM

LCM is easy to be damaged.
Please note below and be careful for handling!

Correct handling:

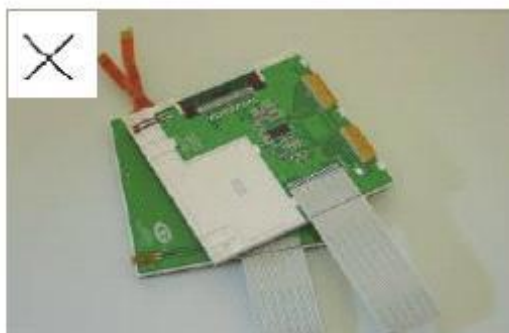


As above picture, please handle with anti-static gloves around LCM edges.

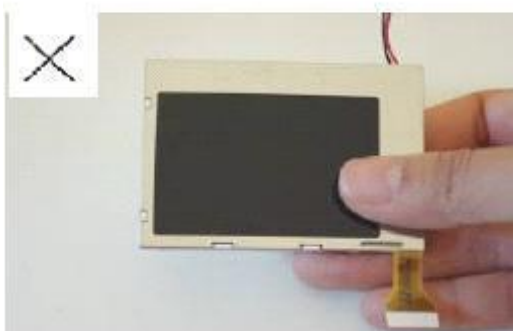
Incorrect handling:



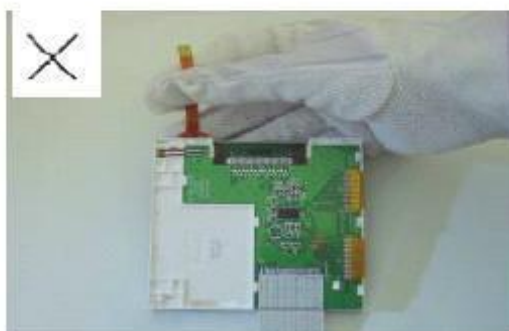
Please don't touch IC directly.



Please don't stack LCM.



Please don't hold the surface of panel.

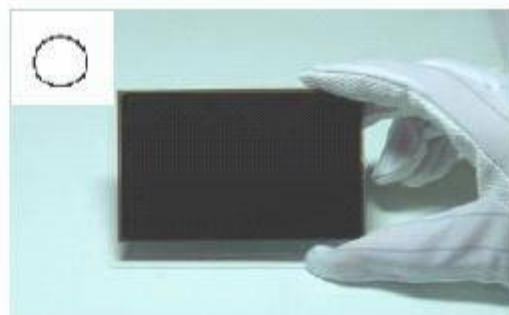


Please don't stretch interface of output, such as FPC cable.

Handling precaution for LCD

LCD is easy to be damaged.
Please note below and be careful for handling!

Correct handling:

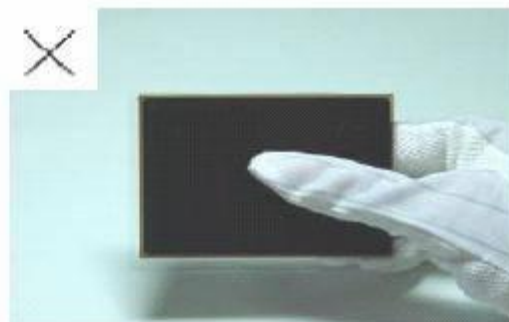


As above photo, please handle with anti-static gloves around LCD edges.

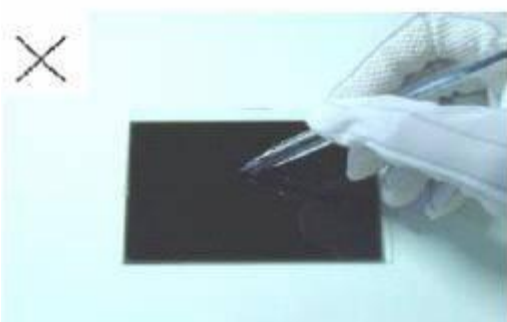
Incorrect handling:



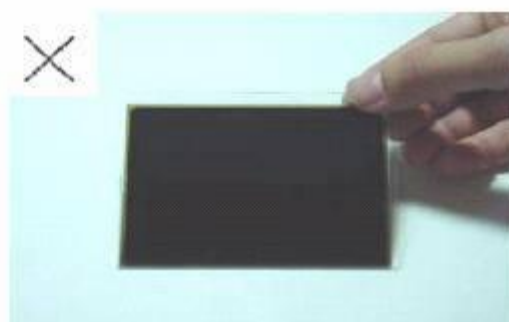
Please don't stack the LCDS.



Please don't hold the surface of LCD.



Please don't operate with sharp stick such as pens.



Please don't touch ITO glass without anti-static gloves.

Storage Precautions

When storing the LCD modules, the following precaution is necessary.

- (1) Store them in a sealed polyethylene bag. If properly sealed, there is no need for the dessicant.
- (2) Store them in a dark place. Do not expose to sunlight or fluorescent light, keep the temperature between 0°C and 35°C, and keep the relative humidity between 40%RH and 60%RH.
- (3) The polarizer surface should not come in contact with any other objects. (We advise you to store them in the anti-static electricity container in which they were shipped.

Others

Liquid crystals solidify under low temperature (below the storage temperature range) leading to defective orientation or the generation of air bubbles (black or white). Air bubbles may also be generated if the module is subject to a low temperature.

If the LCD modules have been operating for a long time showing the same display patterns, the display patterns may remain on the screen as ghost images and a slight contrast irregularity may also appear. A normal operating status can be regained by suspending use for some time. It should be noted that this phenomenon does not adversely affect performance reliability.

To minimize the performance degradation of the LCD modules resulting from destruction caused by static electricity etc., exercise care to avoid holding the following sections when handling the modules.

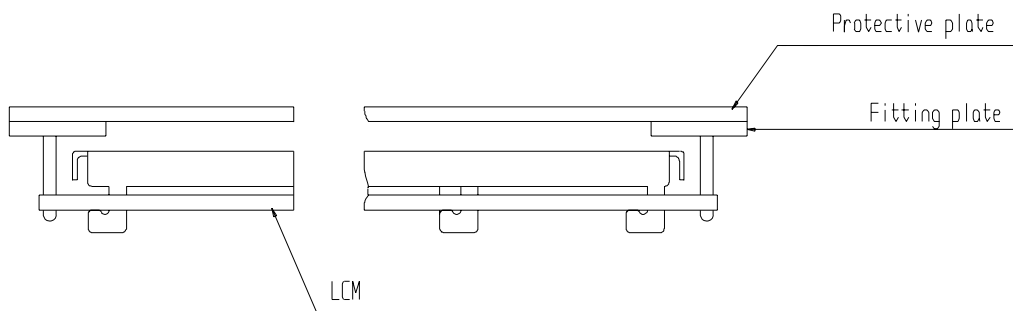
- Exposed area of the printed circuit board.
- Terminal electrode sections.

USING LCD MODULES

Installing LCD Modules

The hole in the printed circuit board is used to fix LCM as shown in the picture below. Attend to the following items when installing the LCM.

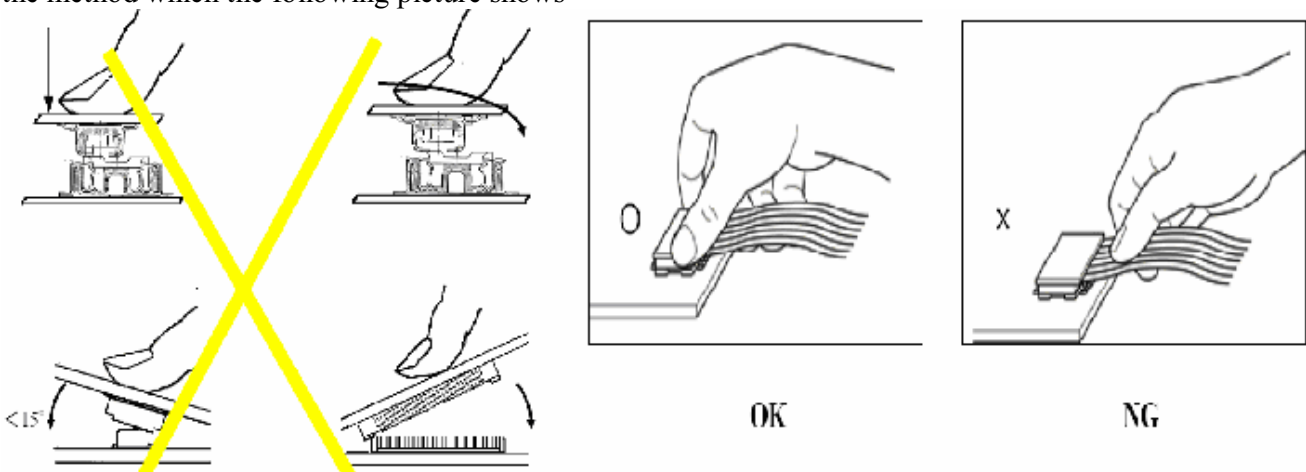
- (1) Cover the surface with a transparent protective plate to protect the polarizer and LC cell.



- (2) When assembling the LCM into other equipment, the spacer to the bit between the LCM and the fitting plate should have enough height to avoid causing stress to the module surface, refer to the individual specifications for measurements. The measurement tolerance should be $\pm 0.1\text{mm}$.

Precaution for assemble the module with BTB connector:

Please note the position of the male and female connector position, don't assemble or assemble like the method which the following picture shows



Precaution for soldering to the LCM

	Hand soldering	Machine drag soldering	Machine press soldering
No ROHS product	290°C ~350°C. Time : 3-5S.	330°C ~350°C. Speed : 4-8 mm/s.	300°C ~330°C. Time : 3-6S. Press: 0.8~1.2Mpa
ROHS product	340°C ~370°C. Time : 3-5S.	350°C ~370°C. Time : 4-8 mm/s.	330°C ~360°C. Time : 3-6S. Press: 0.8~1.2Mpa

(1) If soldering flux is used, be sure to remove any remaining flux after finishing to soldering operation. (This does not apply in the case of a non-halogen type of flux.) It is recommended that you protect the LCD surface with a cover during soldering to prevent any damage due to flux spatters.

(2) When soldering the electroluminescent panel and PC board, the panel and board should not be detached more than three times. This maximum number is determined by the temperature and time conditions mentioned above, though there may be some variance depending on the temperature of the soldering iron.

(3) When remove the electroluminescent panel from the PC board, be sure the solder has completely melted, the soldered pad on the PC board could be damaged.

Precautions for Operation

(1) Viewing angle varies with the change of liquid crystal driving voltage (VLCD). Adjust VLCD to show the best contrast.

(2) It is an indispensable condition to drive LCD's within the specified voltage limit since the higher voltage then the limit cause the shorter LCD life. An electrochemical reaction due to direct current causes LCD's undesirable deterioration, so that the use of direct current drive should be avoided.

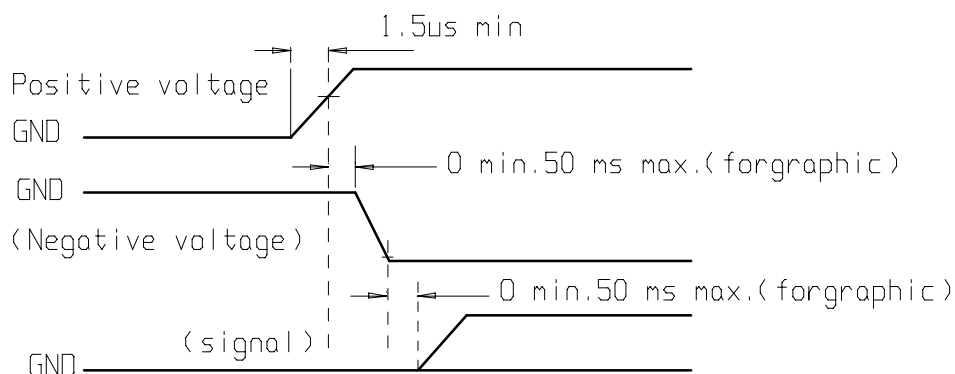
(3) Response time will be extremely delayed at lower temperature than the operating temperature range and on the other hand at higher temperature LCD's show dark color in them. However those phenomena do not mean malfunction or out of order with LCD's, Which will come back in the specified operating temperature.

(4) If the display area is pushed hard during operation, the display will become abnormal. However, it will return to normal if it is turned off and then back on.

(5) A slight dew depositing on terminals is a cause for electro-chemical reaction resulting in terminal open circuit. Usage under the maximum operating temperature, 50%RH or less is required.

(6) Input each signal after the positive/negative voltage becomes stable.

(7) Please keep the temperature within specified range for use and storage. Polarization degradation, bubble generation or polarizer peel-off may occur with high temperature and high humidity.



Safety

(1) It is recommended to crush damaged or unnecessary LCDs into pieces and wash them off with solvents such as acetone and ethanol, which should later be burned.

(2) If any liquid leaks out of a damaged glass cell and comes in contact with the hands, wash off thoroughly with soap and water.

Limited Warranty

Unless agreed between factory and customer, factory will replace or repair any of its LCD modules which are found to be functionally defective when inspected in accordance with factory LCD acceptance standards (copies available upon request) for a period of one year from date of production. Cosmetic/visual defects must be returned to factory within 90 days of shipment. Confirmation of such date shall be based on data code on product. The warranty liability of factory to repair and/or replacement on the terms set forth above. Factory will not be responsible for any subsequent or consequential events.

Return LCM under warranty

No warranty can be granted if the precautions stated above have been disregarded. The typical examples of violations are :

- Broken LCD glass.
- PCB eyelet is damaged or modified.
- PCB conductors damaged.
- Circuit modified in any way, including addition of components.
- PCB tampered with by grinding, engraving or painting varnish.
- Soldering to or modifying the bezel in any manner.

Module repairs will be invoiced to the customer upon mutual agreement. Modules must be returned with sufficient description of the failures or defects. Any connectors or cable installed by the customer must be removed completely without damaging the PCB eyelet, conductors and terminals.

■ PRIOR CONSULT MATTER

- 1.①For factory standard products, we keep the right to change material, process ... for improving the product property without notice on our customer.
②For OEM products, if any change needed which may affect the product property, we will consult with our customer in advance.
2. If you have special requirement about reliability condition, please let us know before you start the test on our samples.