

Preliminary

Ver.: 0.01

TFT LCD Specification

Model Name: TD036THEA3

Customer Signature
Date

This technical specification is subjected to change without notice.

The information contained herein is the exclusive property of toppoly Optoelectronics corporation, and shall not be distributed, reproduced, or disclosed in whole or in part without prior written permission of toppoly Optoelectronics corporation.

Table of Contents

NO.	Item	Page
	Cover Sheet	1
	Table of Contents	2
	Record of Revision	3
1	Features	4
2	General Specifications	4
3	Input / Output Terminals	5
4	Absolute Maximum Ratings	7
5	Electrical Characteristics	7
6	Timing Chart	8
7	Optical Characteristics	17
8	Reliability	19
9	Handling Cautions	20
10	Mechanical Drawing	21
11	Packing Drawing	22

Record of Revision

Rev	Issued Date	Description
0.01	May 12, 2006	New create

1. FEATURES

The 3.6" LCD module is the active matrix color TFT LCD module. LTPS (Low Temperature Poly Silicon) TFT technology is applied with vertical and horizontal drivers built on the panel.

Both of horizontal and vertical scan are reversible and controlled by the serial interface commands.

The product is designed for the requirement of the green product, and the specification complies with Toppoly's "Green Product Chemical Substance Specification Standard Hand Book".

2. GENERAL SPECIFICATIONS

Item	Description	Unit
Display Size (Diagonal)	3.6	Inch
Display Type	Transmissive	-
Active Area (HxV)	72.96 x 54.72	mm
Number of Dots (HxV)	320 x RGB x 240	dot
Dot Pitch (HxV)	0.076 x 0.228	mm
Color Arrangement	RGB Stripe	-
Color Numbers	8 bit RGB (16M color)	-
Outline Dimension (HxVxT) *	80.2 x 66.3 x 3.2	mm
Weight	35	G
Surface Treatment	Hard Coating (3H)	-

* Exclude FPC and protrusions.

3. INPUT/OUTPUT TERMINALS

3.1 TFT LCD Panel

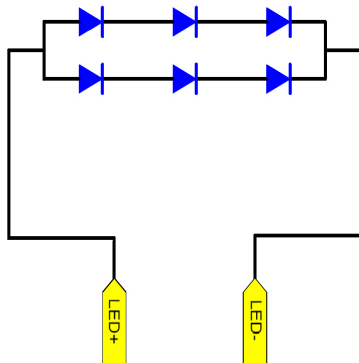
Recommend connector:

Compatible with P-Two AF7501-N2G11

Pin	Symbol	I/O	Description	Remark
1	CP3	C	Capacitor for charge pump	
2	CP4	C	Capacitor for charge pump	
3	CP5	C	Capacitor for charge pump	
4	CP6	C	Capacitor for charge pump	
5	CP7	C	Capacitor for charge pump	
6	CP8	C	Capacitor for charge pump	
7	NC	--	No connection	
8	PCDL	C	Capacitor for pre-charge data signal low	
9	PCDH	C	Capacitor for pre-charge data signal high	
10	VCOML	C	Capacitor for VCOM low	
11	VCOMH	C	Capacitor for VCOM high	
12	AGND	--	Analog ground	
13	PVDD	C	Regulation capacitor for charge pump	
14	AVDD	C	Regulation capacitor for analog voltage	
15	CP1	C	Capacitor for charge pump	
16	CP2	C	Capacitor for charge pump	
17	PWM	O	Power transistor gate signal for the boost converter	
18	FB	I	Main boost regulator feedback input	
19	LED-	--	LED power: cathode	Note 3-1
20	NC	--	No connection	
21	NC	--	No connection	
22	LED+	--	LED power: anode	
23	GND	--	Ground	
24	VCC	--	Power supply	
25	VD	I	Vertical sync input	
26	HD	I	Horizontal sync input	
27	DCLK	I	Clock signal, latch data onto line latches at the rising edge	
28	DIN0	I	Data input	
29	DIN1	I	Data input	
30	DIN2	I	Data input	
31	DIN3	I	Data input	

32	DIN4	I	Data input	
33	DIN5	I	Data input	
34	DIN6	I	Data input	
35	DIN7	I	Data input	
36	SDA	I/O	Serial interface data line	
37	SCL	I	Serial interface clock line	
38	SCEN	I	Serial interface chip enable line	
39	SHDB	I	Sleep mode setting pin	
40	GRESTB	I	Global reset pin	

Note 3-1: The figure below shows the connection of backlight LED.



4. ABSOLUTE MAXIMUM RATINGS

VSS=0V

Item	Symbol	Min	MAX	Unit	Remark
Power Supply	VCC	-0.5	4.5	V	
Input Signal Voltage	V _{IN1}	0	V _{CC}	V	VD, HD, DCLK, DIN[0:7], SDA, SCL, SCEN, SHDB, GRESTD
Backlight Forward Current	I _F	-	50	mA	
Operating Temperature	T _{opr}	-10	+60	°C	
Storage Temperature	T _{stg}	-30	+80	°C	

5. ELECTRICAL CHARACTERISTICS

5.1. Driving TFT LCD Panel

GND=0V, Ta=25°C

Item	Symbol	MIN	TYP	MAX	Unit	Remark
Power Supply Voltage	V _{CC}	2.85	3.0	3.6	V	Note 5-1
Input Signal Voltage	Low Level	V _{IL}	GND	-	0.2x V _{CC} *	VD, HD, DCLK, DIN[0:7], SDA, SCL, SCEN, SHDB, GRESTD
	High Level	V _{IH}	0.8x V _{CC} *	-	V _{CC} *	
PWM Output Voltage Level	V _{PWM}	0	-	V _{CC} *	V	
Feedback Voltage	V _{FB}	0.55	0.6	0.65	V	Note 5-2
Panel Power Consumption	W _P	-	50	-	mW	

V_{CC}* =V_{CC}(TYP)

Note 5-1: The V_{CC} power is provided for overall panel module supply voltage.

Note 5-2: DC/DC feedback control voltage

5.2. Driving Backlight

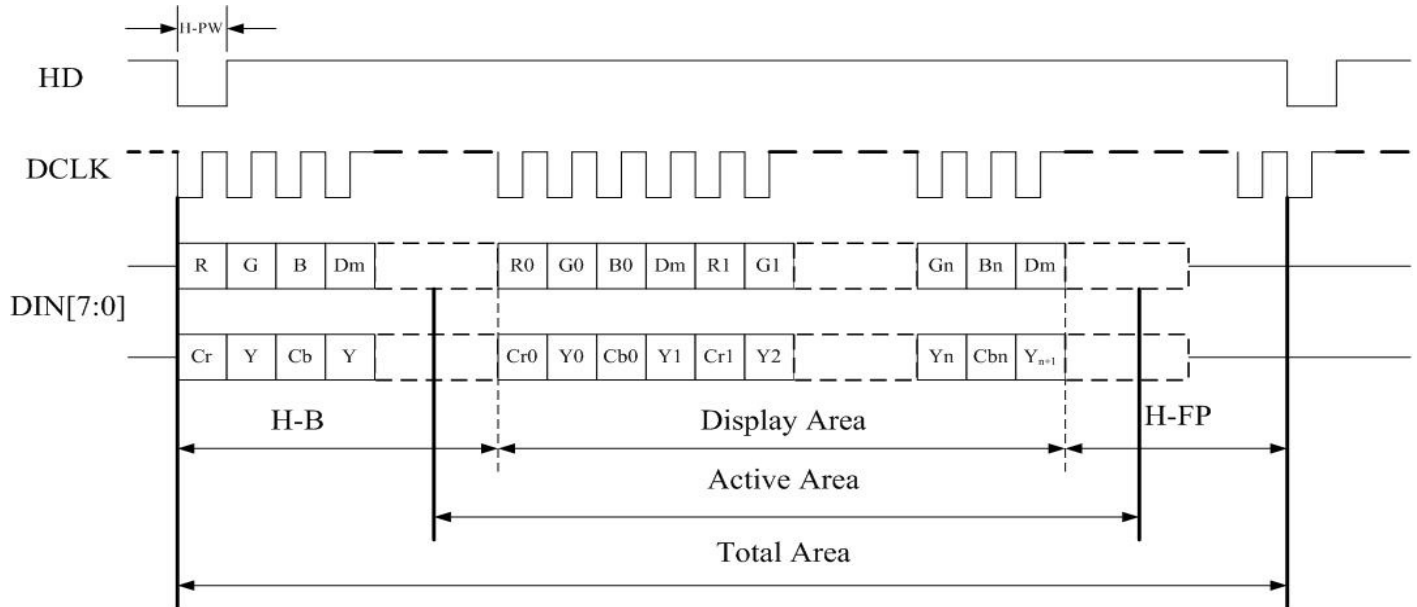
Ta=25°C

Item	Symbol	MIN	TYP	MAX	Unit	Remark
Forward Current	I _F	--	40	46	mA	Note 5-3
Forward Current Voltage	V _{F20}	--	10.8	12	V	
Backlight Power Consumption	W _{BL20}	--	432	552	mW	

Note 5-3: Backlight driving circuit is recommended as the fix current circuit.

6. TIMING CHART

6.1 Serial RGB Dummy Mode and Serial YUV 4:2:2 Mode: Horizontal



6.1.1 YUV Mode: ITUR601-NTSC

Item	Symbol	MIN	TYP	MAX	Unit
Dot Clock Frequency	DCLK	-	27	-	MHz
Horizontal Display Active	Display Area	-	1440	-	DCLK
Horizontal Total Time	Total Area	-	1716	-	DCLK
HSYNC Pulse Width	H-PW	-	1	-	DCLK
Horizontal Back Porch	H-B	-	240	-	DCLK
Horizontal Front Porch	H-FP	-	36	-	DCLK

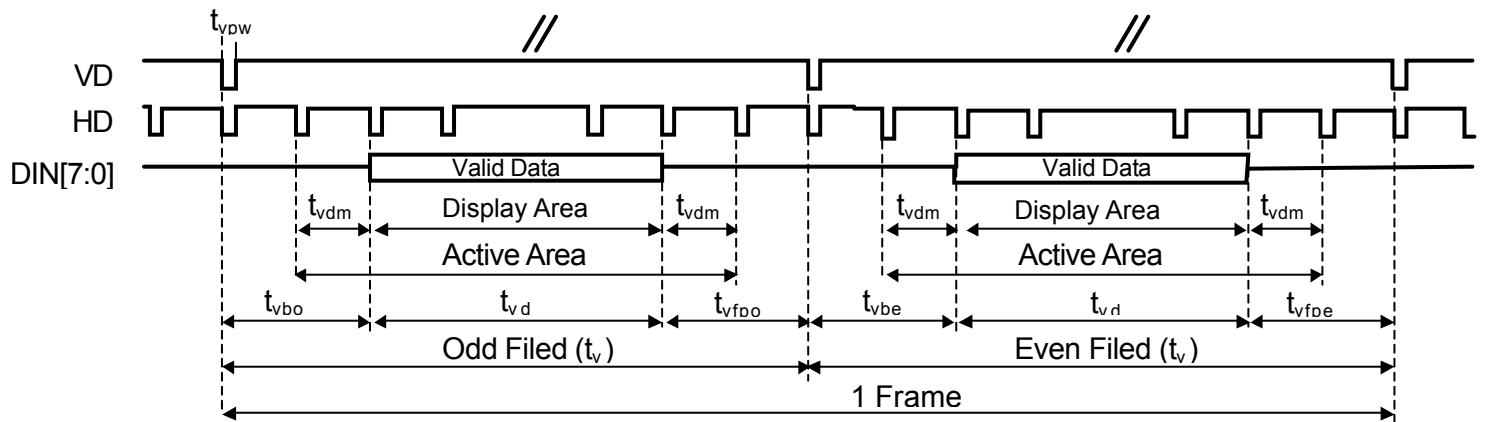
6.1.2 YUV Mode: ITUR601-PAL

Item	Symbol	MIN	TYP	MAX	Unit
Dot Clock Frequency	DCLK	-	27	-	MHz
Horizontal Display Active	Display Area	-	1440	-	DCLK
Horizontal Total Time	Total Area	-	1728	-	DCLK
HSYNC Pulse Width	H-PW	-	1	-	DCLK
Horizontal Back Porch	H-B	-	240	-	DCLK
Horizontal Front Porch	H-FP	-	48	-	DCLK

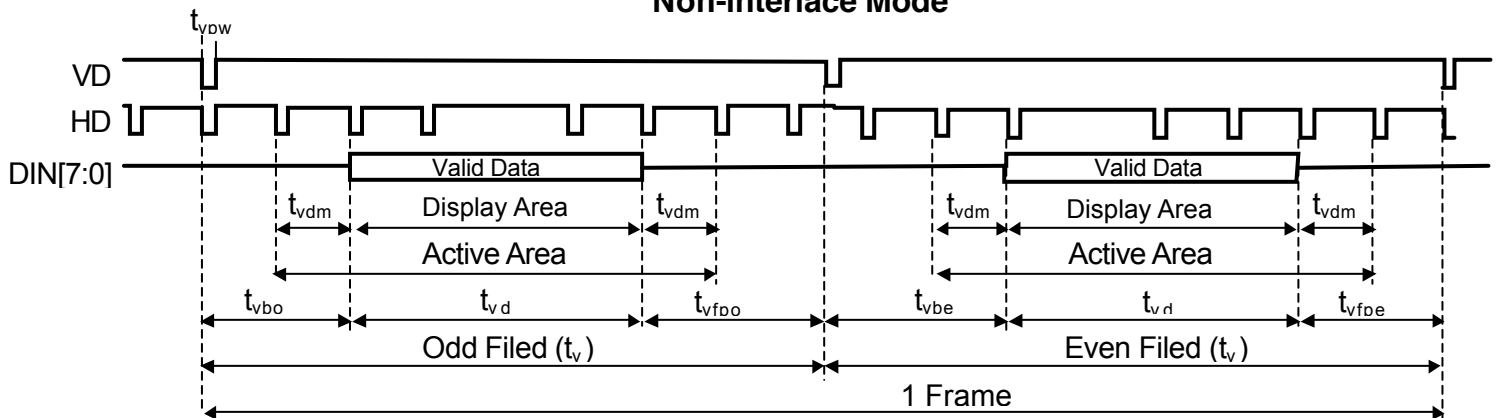
6.1.3 RGB Dummy Mode

Item		Symbol	MIN	TYP	MAX	Unit
Dot Clock Frequency	QVGA	DCLK	-	25	-	MHz
	NTSC		-	24.54	-	
	PAL		-	24.38	-	
Horizontal Display Active		Display Area	-	1280	-	DCLK
Horizontal Total Time		Total Area	-	1560	-	DCLK
HSYNC Pulse Width		H-PW	-	1	-	DCLK
Horizontal Back Porch		H-B	-	240	-	DCLK
Horizontal Front Porch		H-FP	-	40	-	DCLK

6.2 Serial RGB Dummy Mode and Serial YUV 4:2:2 Mode: Vertical



Non-interlace Mode



Interlace Mode

6.2.1 Non-Interlace Mode: NTSC/QVGA

Item	Symbol	MIN	TYP	MAX	Unit
Vertical Display Active	t_{vd}	-	240	-	Line
Vertical Total Time	t_v	-	262	-	Line
VSYNC Pulse Width	t_{vpw}	1	1	-	DCLK
Vertical Back Porch	Odd Field	t_{vbo}	-	21	Line
	Even Field	t_{vbe}	-	21	Line
Vertical Front Porch	Odd Field	t_{vfpo}	-	1	Line
	Even Field	t_{vfpo}	-	1	Line
Vertical Dummy	t_{vdm}	-	0	-	Line

6.2.2 Non-Interlace Mode: PAL

Item		Symbol	MIN	TYP	MAX	Unit
Vertical Display Active		t_{vd}	-	288	-	Line
Vertical Total Time		t_v	-	312	-	Line
VSYNC Pulse Width		t_{vpw}	1	1	-	DCLK
Vertical Back Porch	Odd Field	t_{vbo}	-	24	-	Line
	Even Field	t_{vbe}	-	24	-	Line
Vertical Front Porch	Odd Field	t_{vfpo}	-	0	-	Line
	Even Field	t_{vfpe}	-	0	-	Line
Vertical Dummy		t_{vdm}	-	0	-	Line

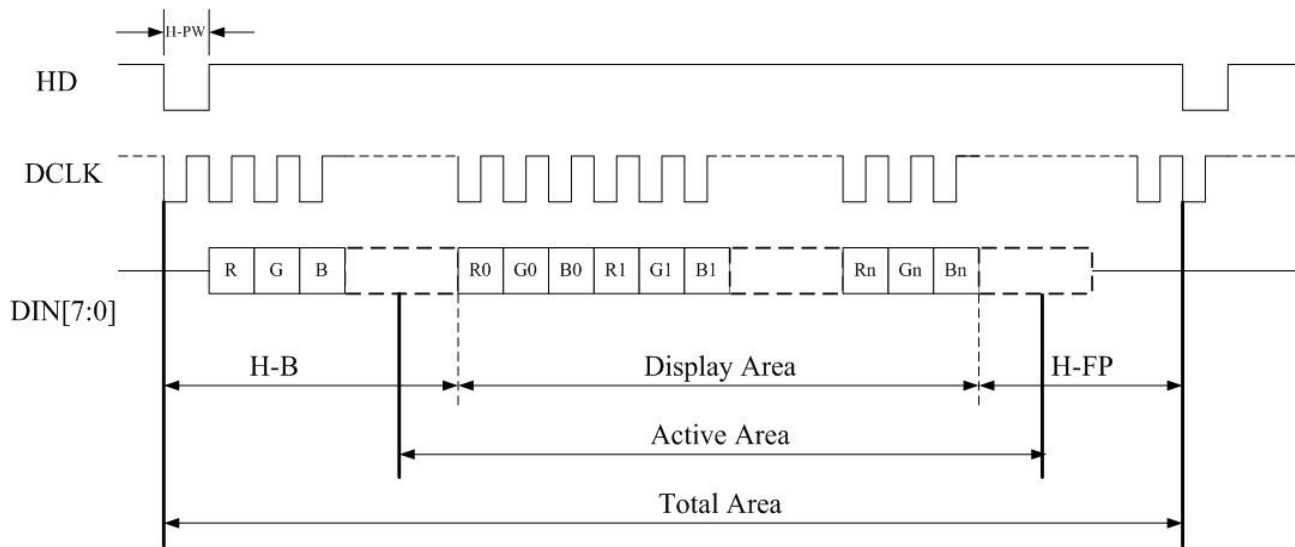
6.2.3 Interlace Mode: NTSC/QVGA

Item		Symbol	MIN	TYP	MAX	Unit
Vertical Display Active		t_{vd}	-	240	-	Line
Vertical Total Time		t_v	-	262.5	-	Line
VSYNC Pulse Width		t_{vpw}	1	1	-	DCLK
Vertical Back Porch	Odd Field	t_{vbo}	-	21	-	Line
	Even Field	t_{vbe}	-	21.5	-	Line
Vertical Front Porch	Odd Field	t_{vfpo}	-	1.5	-	Line
	Even Field	t_{vfpe}	-	1	-	Line
Vertical Dummy		t_{vdm}	-	0	-	Line

6.2.4 Interlace Mode: PAL

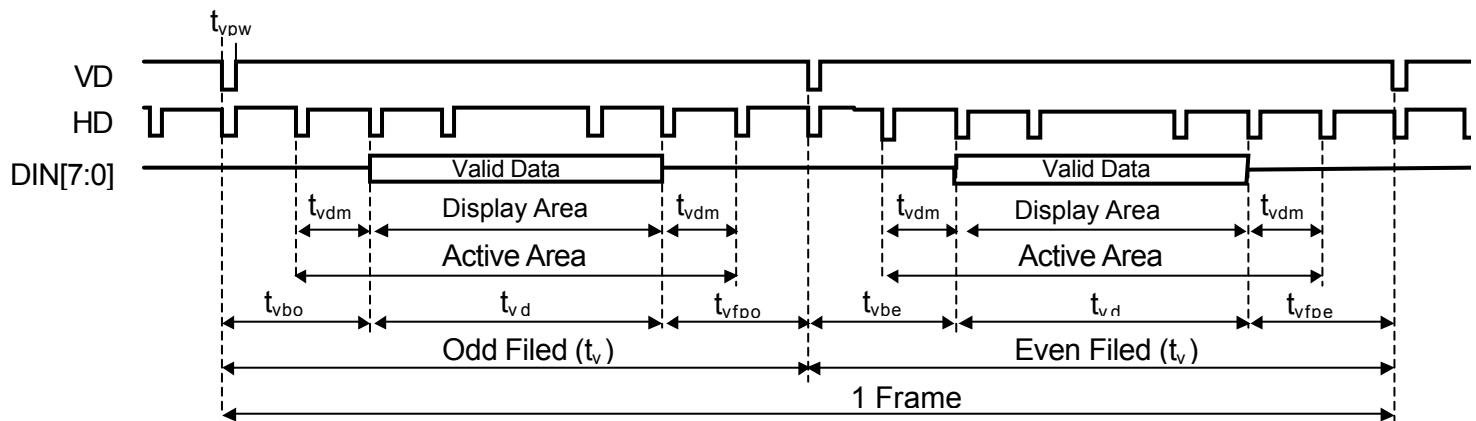
Item		Symbol	MIN	TYP	MAX	Unit
Vertical Display Active		t_{vd}	-	288	-	Line
Vertical Total Time		t_v	-	312.5	-	Line
VSYNC Pulse Width		t_{vpw}	1	1	-	DCLK
Vertical Back Porch	Odd Field	t_{vbo}	-	24	-	Line
	Even Field	t_{vbe}	-	24.5	-	Line
Vertical Front Porch	Odd Field	t_{vfpo}	-	0.5	-	Line
	Even Field	t_{vfpe}	-	0	-	Line
Vertical Dummy		t_{vdm}	-	0	-	Line

6.3 Through Mode: Horizontal

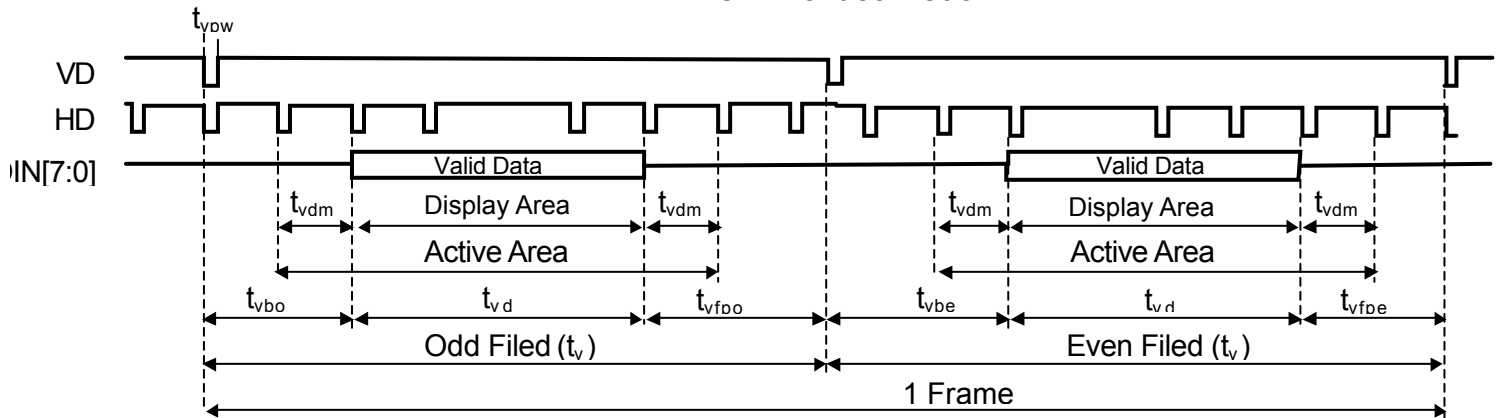


Item	Symbol	MIN	TYP	MAX	Unit
Dot Clock Period	DCLK		51.9		ns
Horizontal Display Active	Display Area	-	960	-	DCLK
Horizontal Total Time	Total Area	-	1171	-	DCLK
HSYNC Pulse Width	H-PW	-	1	-	DCLK
Horizontal Back Porch	H-B	-	152	-	DCLK
Horizontal Front Porch	H-FP	-	59	-	DCLK

6.4 Through Mode: Vertical



Non-Interlace Mode



Interlace Mode

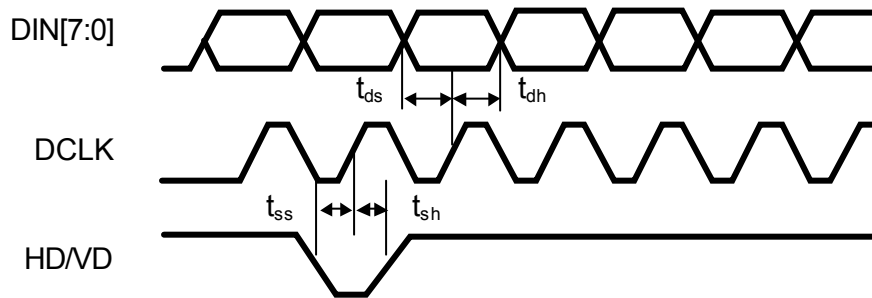
6.4.1 Non-Interlace Mode

Item	Symbol	MIN	TYP	MAX	Unit
Vertical Display Active	t_{vd}	-	240	-	Line
Vertical Total Time	t_v	-	262	-	Line
VSYNC Pulse Width	t_{vpw}	1	1	-	DCLK
Vertical Back Porch	Odd Field	t_{vbo}	-	14	Line
	Even Field	t_{vbe}	-	14	Line
Vertical Front Porch	Odd Field	t_{vfpo}	-	8	Line
	Even Field	t_{vfpe}	-	8	Line
Vertical Dummy	t_{vdm}	-	0	-	Line

6.4.2 Interlace Mode

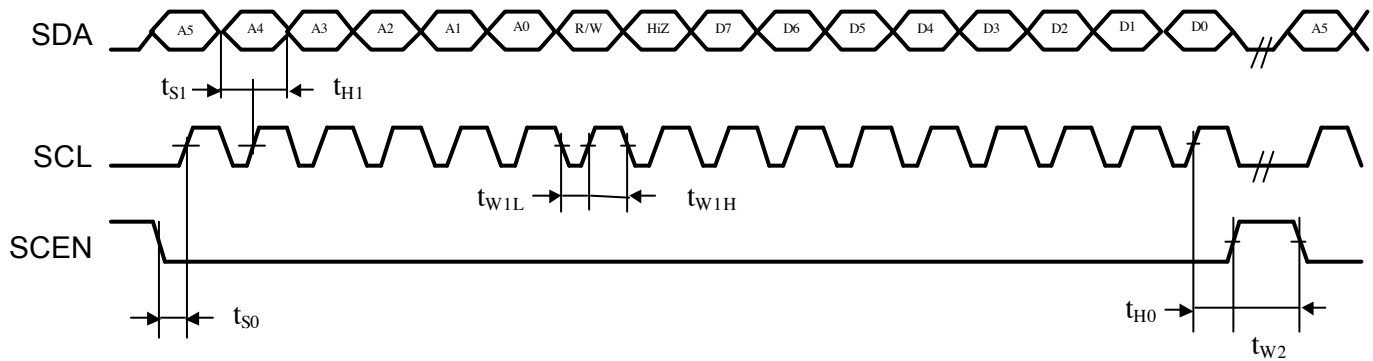
Item		Symbol	MIN	TYP	MAX	Unit
Vertical Display Active		t_{vd}	-	240	-	Line
Vertical Total Time		t_v	-	262.5	-	Line
VSYNC Pulse Width		t_{vpw}	1	1	-	DCLK
Vertical Back Porch	Odd Field	t_{vbo}	-	14	-	Line
	Even Field	t_{vbe}	-	14.5	-	Line
Vertical Front Porch	Odd Field	t_{vfpo}	-	8.5	-	Line
	Even Field	t_{vfpe}	-	8	-	Line
Vertical Dummy		t_{vdm}	-	0	-	Line

6.5 Setup Time and Hold Time



Item	Symbol	MIN	TYP	MAX	Unit
DCLK Duty Ratio	-	40	-	60	%
Data Setup Time	t_{ds}	12	-	-	ns
Data Hold Time	t_{dh}	12	-	-	ns
Control Signal Setup Time	t_{ss}	12	-	-	ns
Control Signal Hold Time	t_{sh}	12	-	-	ns

6.6 Serial Interface Timing



Parameter	Symbol	Condition	MIN	TYP	MAX	Unit
Data Setup Time	t_{S0}	SCEN to SCL	150	-	-	ns
	t_{S1}	SDA to SCL	150	-	-	ns
Data Hold Time	t_{H0}	SCEN to SCL	150	-	-	ns
	t_{H1}	SDA to SCL	150	-	-	ns
Pulse width	t_{W1L}	SCL pulse width	160	-	-	ns
	t_{W1H}	SCL pulse width	160	-	-	ns
	t_{W2}	SCEN pulse width	1.0	-	-	us
Clock Duty	-	SCL duty ratio	40	50	60	%

7. OPTICAL CHARACTERISTICS

7.1 Optical Specification

$T_a=25^{\circ}\text{C}$

Item		Symbol	Condition	MIN	TYP	MAX	Unit	Remarks
Viewing Angles		Θ 11	CR = 10	30	40	--	Degree	Note 7-1
		Θ 12		30	40	--		
		Θ 21		15	20	--		
		Θ 22		40	50	--		
Contrast Ratio		CR	Θ=0°	300	400	--		Note 7-2
Response Time	Rising	Tr	Θ=0°	--	13	20	ms	Note 7-3
	Falling	Tf	Θ=0°	--	22	30		
Luminance	I _F =40mA	L	Θ=0°	220	280	--	cd/m ²	Note 7-4
Chromaticity	White	x _W	Θ=0°	0.26	0.31	0.36		Note 7-5
		y _W	Θ=0°	0.29	0.34	0.39		

7.2 Basic Measure Conditions

7.2.1 Driving voltage

Driving voltage with Digital Interface

VCC= 3V

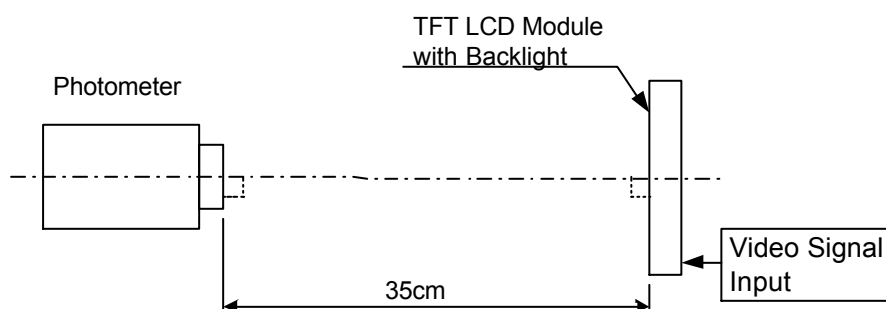
7.2.2 Ambient Temperature: $T_a=25^{\circ}\text{C}$

7.2.3 Testing Point: Measure in the display center point and the test angle $\theta=0^{\circ}$

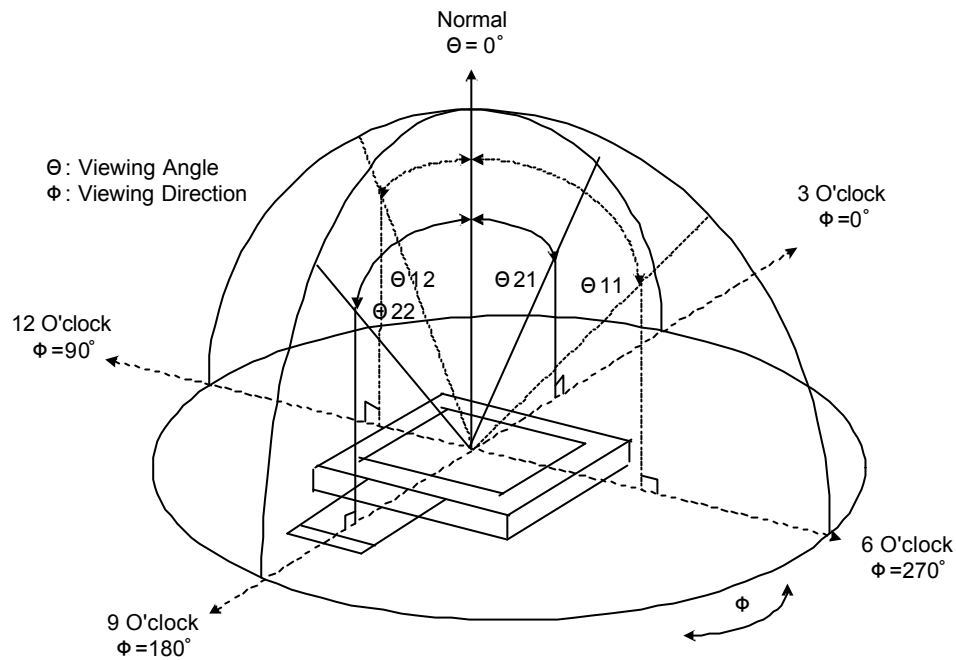
7.2.4 Backlight Current: $I_F=40\text{mA}$.

7.2.5 Testing Facility

Environmental illumination: = 1 Lux



Note 7-1: Viewing angle diagrams:

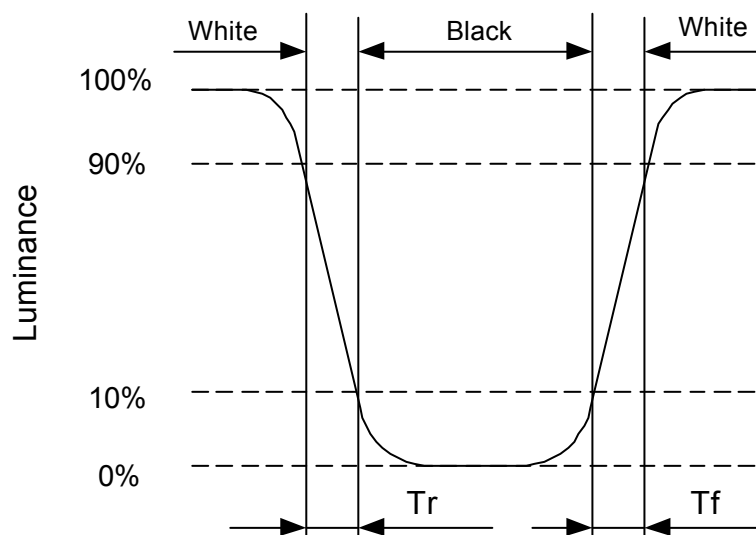


Note 7-2: Contrast Ratio:

Contrast ratio is measured in optimum common electrode voltage.

$$CR = \frac{\text{Luminance with white image}}{\text{Luminance with black image}}$$

Note 7-3: Definition of response time:



Note 7-4: Luminance:

Test Point: Display Center

Note 7-5: Chromaticity: The same test condition as Note 7-4.

8. RELIABILITY

No	Test Item	Condition
1	High Temperature Operation	Ta=+60°C, 240hrs
2	High Temperature & High Humidity Operation	Ta=+40°C, 95% RH, 240hrs
3	Low Temperature Operation	Ta=-10°C, 240hrs
4	High Temperature Storage (non-operation)	Ta=+80°C, 240hrs
5	Low Temperature Storage (non-operation)	Ta=-30°C, 240hrs
6	Thermal Shock (non-operation)	-30°C↔80°C, 50 cycles 30 min 30 min
7	Surface Discharge (non-operation)	C=150pF, R=330Ω; Discharge: Air: ±15kV; Contact: ±8kV 5 times / Point; 5 Points / Panel
8	Vibration (non-operation)	Frequency: 10~55Hz; Amplitude: 1.5mm Sweep Time: 11min Test Time: 2 hrs for each direction of X, Y, Z
9	Shock (non-operation)	Acceleration: 100G; Period: 6ms Directions: ±X, ±Y, ±Z; Cycles: Twice

Ta: Ambient Temperature

9. HANDLING CAUTIONS

9.1 ESD (Electrical Static Discharge) Strategy

ESD will cause serious damage of the panel, ESD strategy is very important in handling.

Following items are the recommend ESD strategy

- 9.1.1 In handling LCD panel, please wear non-charged material gloves. And the conduction ring connect wrist to the earth and the conducting shoes to the earth is necessary.
- 9.1.2 The machine and working table for the panel should have ESD prohibition strategy.
- 9.1.3 In handling the panel, ionize flowing decrease the charge in the environment is necessary.
- 9.1.4 In the process of assembly the module, shield case should connect to the ground.

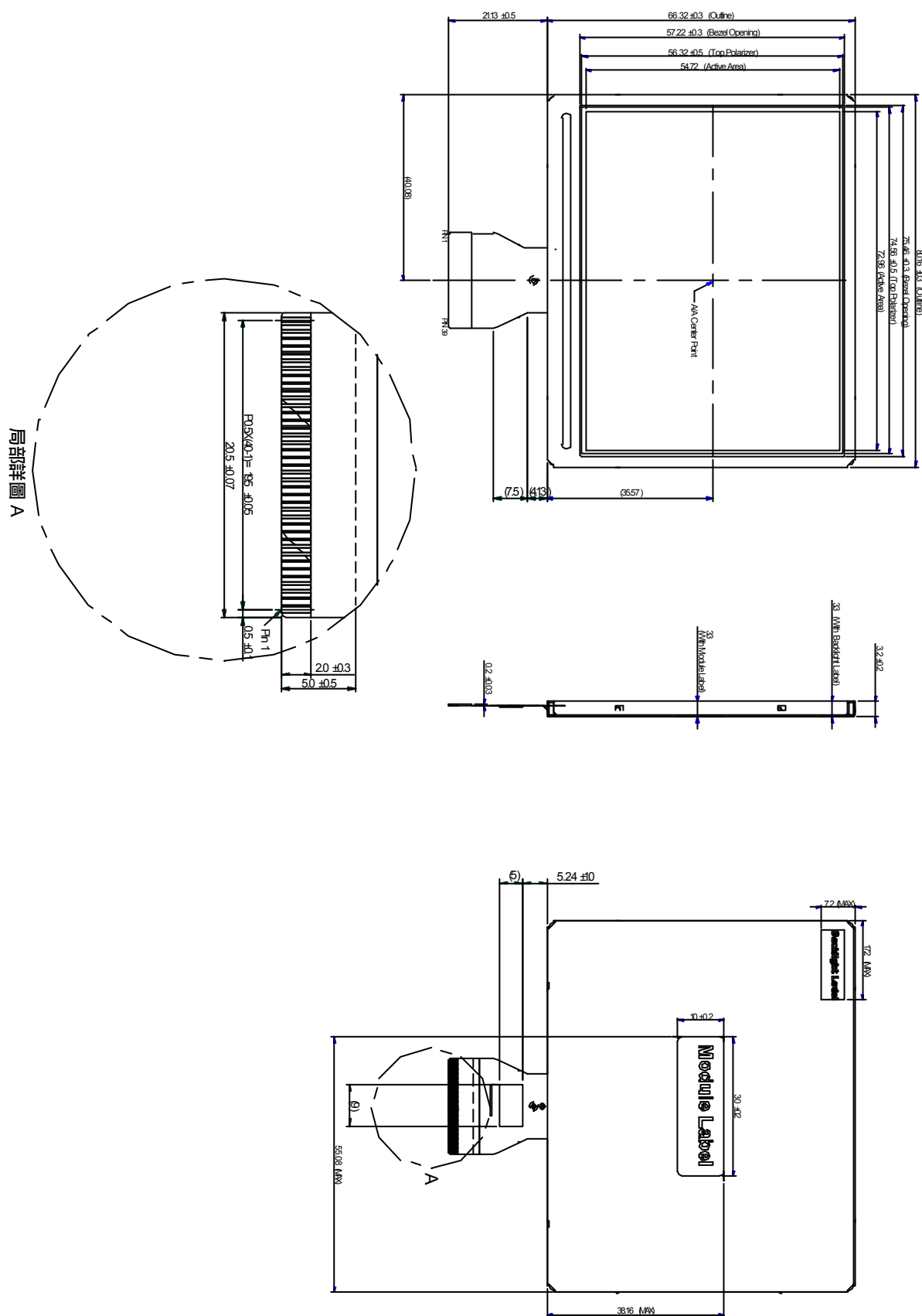
9.2 Environment

- 9.2.1 Working environment of the panel should in the clean room.
- 9.2.2 The front polarizer is easy damaged, handle it carefully and do not scratch it by sharp material.
- 9.2.3 Panel has polarizer protective film in the surface please remove the protection film of polarizer slowly with ionized air to prevent the electrostatic discharge.

9.3 Others

- 9.3.1 Turn off the power supply before connecting and disconnecting signal input cable.
- 9.3.2 The connection area of FPC and panel is very weak, do not handle panel only by FPC or bend FPC.
- 9.3.3 Water drop on the surface or condensation as panel power on will corrode panel electrode.
- 9.3.4 As the packing bag open, watch out the environment of the panel storage. High temperature and high humidity environment is prohibited.
- 9.3.5 When the TFT LCD module is broken, please watch out whether liquid crystal leaks out or not. If your hand touches liquid crystal, wash your hand cleanly by water and soap as soon as possible.

10. MECHANIC DRAWING



11. PACKING DRAWING

3.6" module (TD036THEA3) delivery packing method

- 11.1 Module packed into tray cavity (with Module display face down).
- 11.2 Tray stacking with 20 layers and with 1 empty tray above the stacking tray unit.
2pcs desiccant put above the empty tray.
- 11.3 Stacking tray unit put into the LDPE bag and fix by adhesive tape.
Put 1pc cardboard inside the carton bottom,
then pack the package unit into the carton.
- 11.4 Put 1pc cardboard above the package unit.
- 11.5 Carton tapping with adhesive tape.

